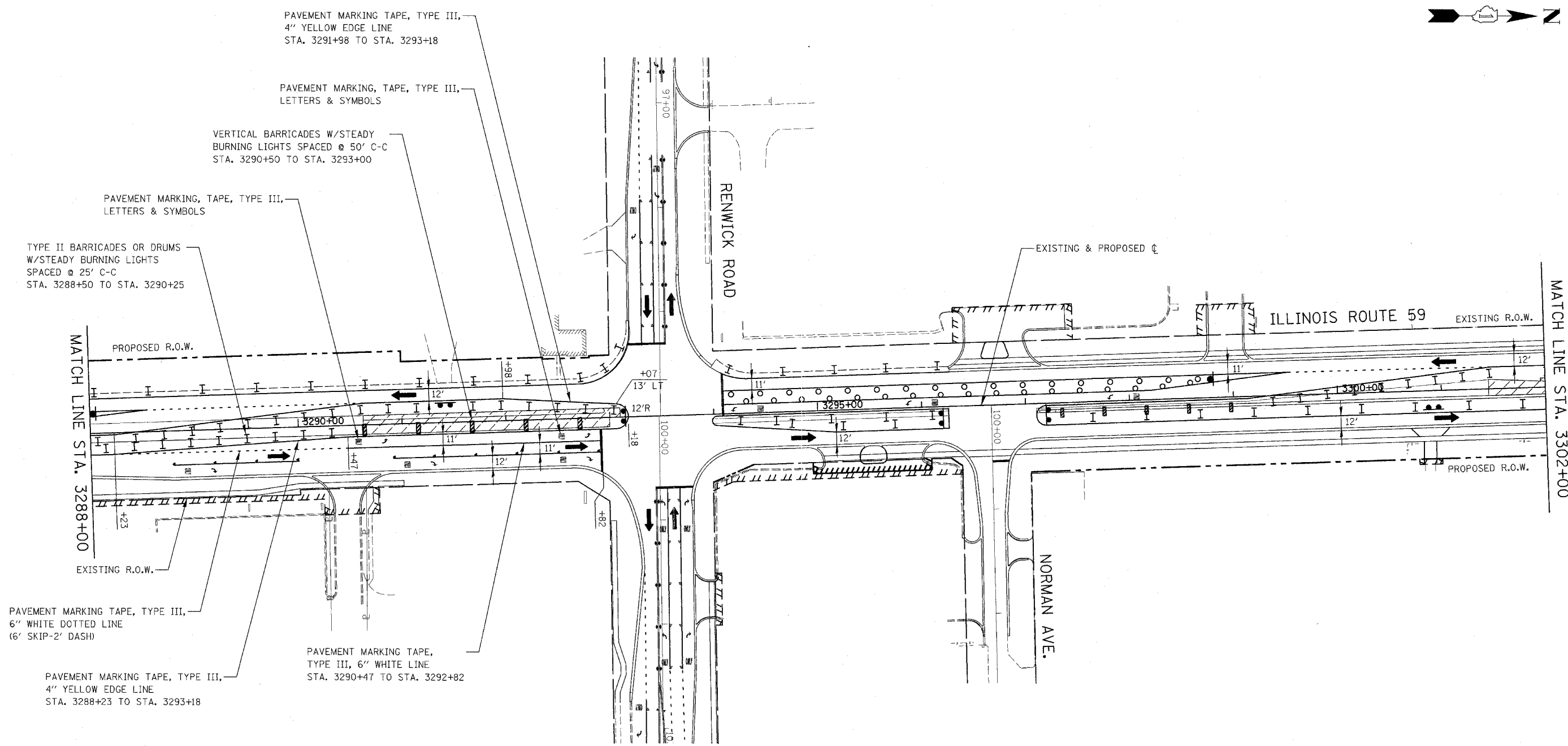


CONTRACT NO. 62417

FAP DIST.	SECTION	COUNTY	TOTAL SHEETS	SHEET NO.
338	(113 & 114) R-5	WILL	625	156
STA. 3288+00		TO STA. 3302+00		
FED. ROAD DIST. NO.		ILLINOIS FAP 338 (IL RTE. 59)		



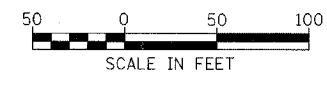
**NOTES**

- PAVEMENT MARKING, VERTICAL PANELS, TYPE II BARRICADES OR DRUMS, AND SIGNAGE NOT INDICATED REMAIN FROM PREVIOUS STAGE.

ILLINOIS DEPARTMENT OF TRANSPORTATION  
 DISTRICT NO. 1 SCHAUMBURG  
**STAGING PLANS**  
 ILLINOIS ROUTE 59  
**STAGE 3**

SCALE AS SHOWN  
 DATE MARCH 18, 2008

DRAWN BY REW  
 CHECKED BY JCM



Rev. 05-01-08 JCM