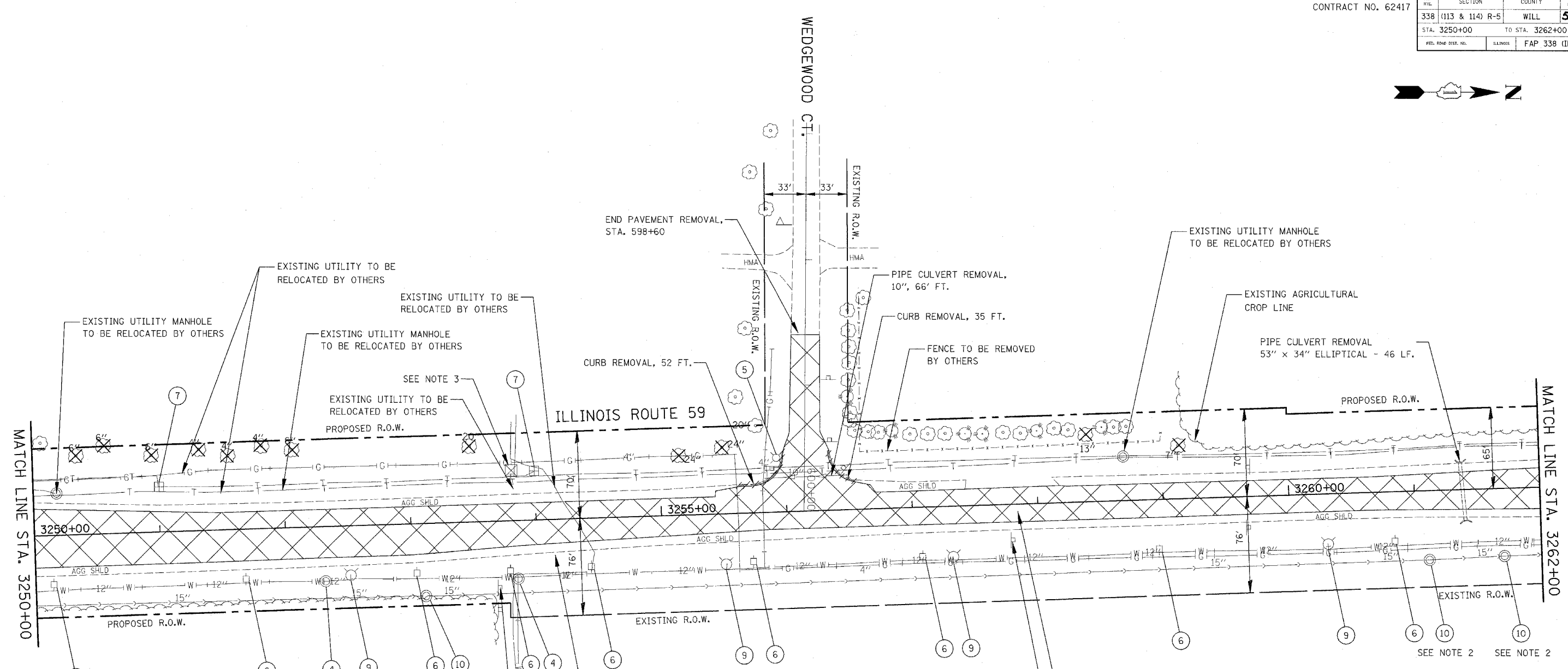
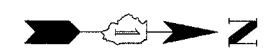


FAP REL.	SECTION	COUNTY	TOTAL SHEETS	SHEET NO.
338	(113 & 114) R-5	WILL	525	176
STA. 3250+00		TO STA. 3262+00		
FED. ROAD DIST. NO.	ILLINOIS	FAP 338 (IL RTE. 59)		



LEGEND

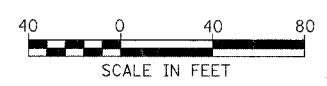
- 8" TREE REMOVAL (DIA.)
- PAVEMENT REMOVAL
- HOT-MIX ASPHALT SURFACE REMOVAL, 2"
- DRIVEWAY PAVEMENT REMOVAL (EXISTING CONCRETE SURFACE)
- DRIVEWAY PAVEMENT REMOVAL (EXISTING HOT-MIX ASPHALT SURFACE)
- EXISTING AGGREGATE DRIVEWAY TO BE REMOVED (PAID FOR AS EARTH EXCAVATION)
- SIDEWALK REMOVAL
- CURB AND GUTTER REMOVAL
- STORM SEWER REMOVAL

- ① INLET TO BE REMOVED
- ② MANHOLE TO BE REMOVED
- ③ CATCH BASIN TO BE REMOVED
- ④ VALVE VAULTS TO BE ADJUSTED
- ⑤ LIGHT POLE TO BE RELOCATED BY OTHERS
- ⑥ UTILITY POLE TO BE RELOCATED BY OTHERS
- ⑦ UTILITY RISER TO BE RELOCATED BY OTHERS
- ⑧ LIGHT POLE AND FOUNDATION TO BE REMOVED BY OTHERS
- ⑨ FIRE HYDRANT TO BE MOVED
- ⑩ SANITARY MANHOLE TO BE ADJUSTED
- ⑪ SANITARY MANHOLE TO BE RECONSTRUCTED
- ⑫ REMOVE EXISTING HANDHOLE

NOTES

1. ANY TREES WITHIN THE ROW NOT BEING REMOVED SHALL BE PROTECTED AND PRUNED AS DIRECTED BY THE ENGINEER. SEE SCHEDULE FOR LOCATIONS.
2. THIS STRUCTURE MAY REQUIRE AN ADDITIONAL ADJUSTMENT FOR TEMPORARY PAVEMENT CONDITIONS. ADDITIONAL QUANTITY HAS BEEN INCLUDED IN THE CONTRACT FOR PAYMENT.
3. EXISTING ROW MARKERS SHALL BE REMOVED. THE COST OF REMOVING EXISTING ROW MARKERS SHALL BE INCLUDED IN THE CONTRACT UNIT PRICE FOR EARTH EXCAVATION.

PAVEMENT REMOVAL, 4791 SQ. YD. STA. 3250+00 TO STA. 3262+00
 SEE GENERAL NOTES REGARDING TRAFFIC SIGNING REMOVAL (TYP.)



ILLINOIS DEPARTMENT OF TRANSPORTATION
 DISTRICT NO. 1 SCHAUMBURG

REMOVAL PLANS

SCALE 1" = 40'
 DATE MARCH 18, 2008

DRAWN BY BSB/KGP
 CHECKED BY JCM