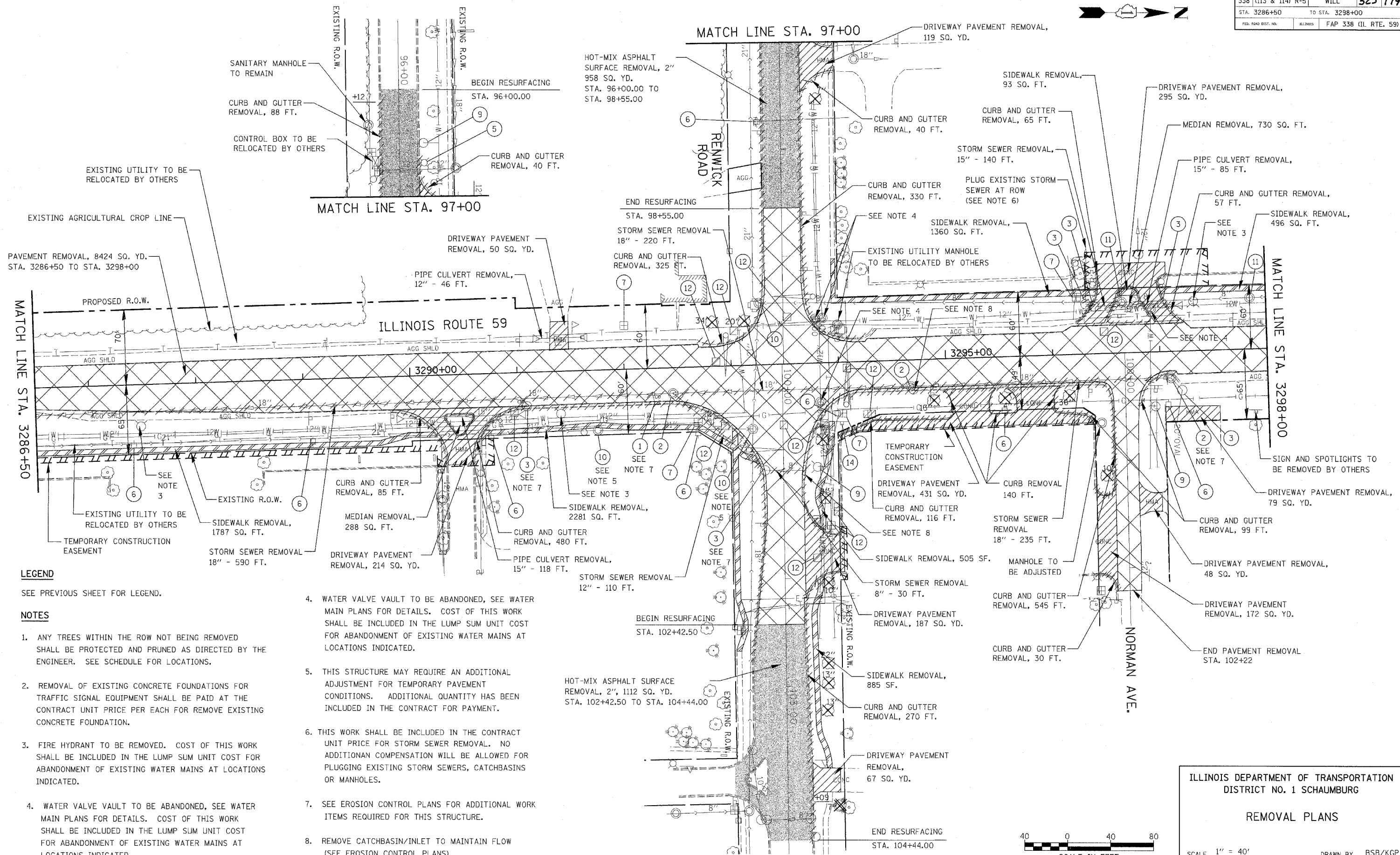


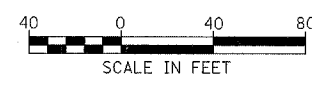
FAP NO.	SECTION	COUNTY	TOTAL SHEETS	SHEET NO.
338 (113 & 114) R-5	WILL		525	179
STA. 3286+50		TO STA. 3298+00		
FED. ROAD DIST. NO.	ILLINOIS	FAP 338 (IL RTE. 59)		



**LEGEND**  
SEE PREVIOUS SHEET FOR LEGEND.

- NOTES**
1. ANY TREES WITHIN THE ROW NOT BEING REMOVED SHALL BE PROTECTED AND PRUNED AS DIRECTED BY THE ENGINEER. SEE SCHEDULE FOR LOCATIONS.
  2. REMOVAL OF EXISTING CONCRETE FOUNDATIONS FOR TRAFFIC SIGNAL EQUIPMENT SHALL BE PAID AT THE CONTRACT UNIT PRICE PER EACH FOR REMOVE EXISTING CONCRETE FOUNDATION.
  3. FIRE HYDRANT TO BE REMOVED. COST OF THIS WORK SHALL BE INCLUDED IN THE LUMP SUM UNIT COST FOR ABANDONMENT OF EXISTING WATER MAINS AT LOCATIONS INDICATED.
  4. WATER VALVE VAULT TO BE ABANDONED, SEE WATER MAIN PLANS FOR DETAILS. COST OF THIS WORK SHALL BE INCLUDED IN THE LUMP SUM UNIT COST FOR ABANDONMENT OF EXISTING WATER MAINS AT LOCATIONS INDICATED.

4. WATER VALVE VAULT TO BE ABANDONED, SEE WATER MAIN PLANS FOR DETAILS. COST OF THIS WORK SHALL BE INCLUDED IN THE LUMP SUM UNIT COST FOR ABANDONMENT OF EXISTING WATER MAINS AT LOCATIONS INDICATED.
5. THIS STRUCTURE MAY REQUIRE AN ADDITIONAL ADJUSTMENT FOR TEMPORARY PAVEMENT CONDITIONS. ADDITIONAL QUANTITY HAS BEEN INCLUDED IN THE CONTRACT FOR PAYMENT.
6. THIS WORK SHALL BE INCLUDED IN THE CONTRACT UNIT PRICE FOR STORM SEWER REMOVAL. NO ADDITIONAL COMPENSATION WILL BE ALLOWED FOR PLUGGING EXISTING STORM SEWERS, CATCHBASINS OR MANHOLES.
7. SEE EROSION CONTROL PLANS FOR ADDITIONAL WORK ITEMS REQUIRED FOR THIS STRUCTURE.
8. REMOVE CATCHBASIN/INLET TO MAINTAIN FLOW (SEE EROSION CONTROL PLANS)



ILLINOIS DEPARTMENT OF TRANSPORTATION  
DISTRICT NO. 1 SCHAUMBURG

**REMOVAL PLANS**

SCALE 1" = 40'  
DATE MARCH 18, 2008

DRAWN BY BSB/KCP  
CHECKED BY JCM