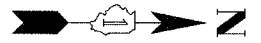
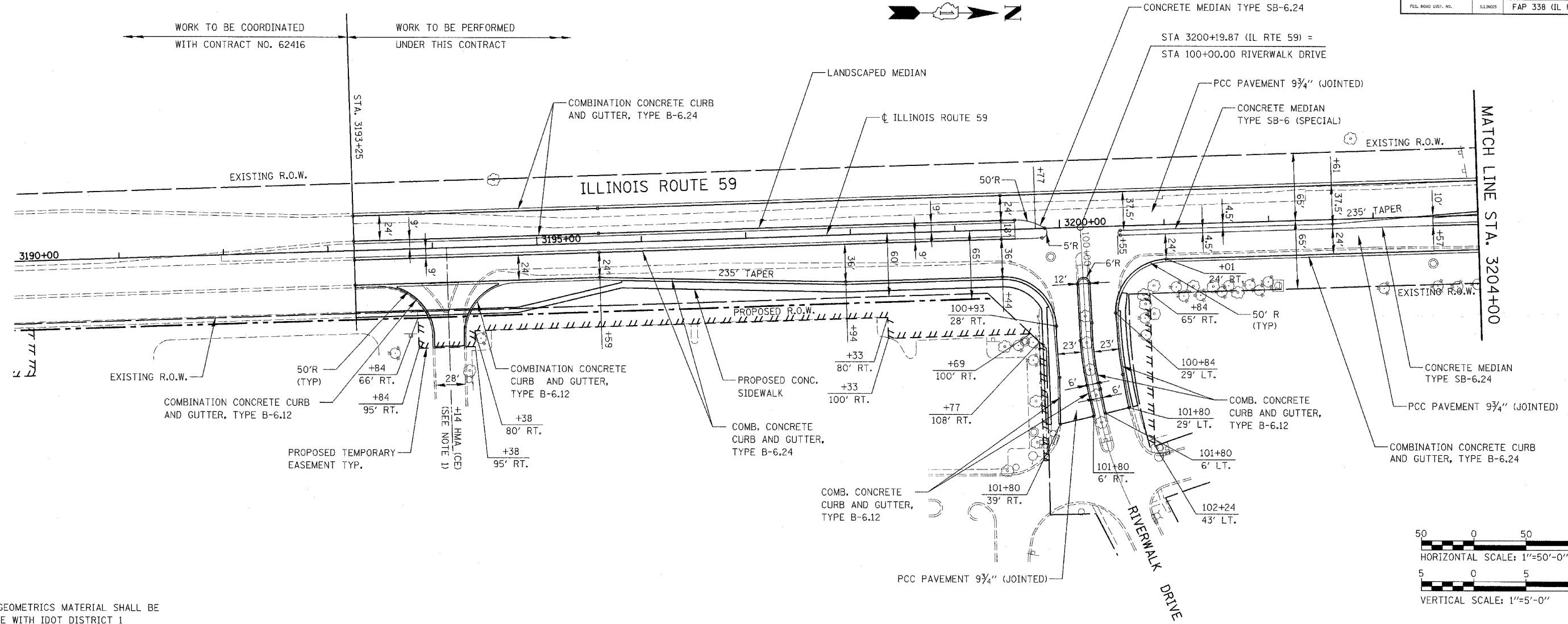


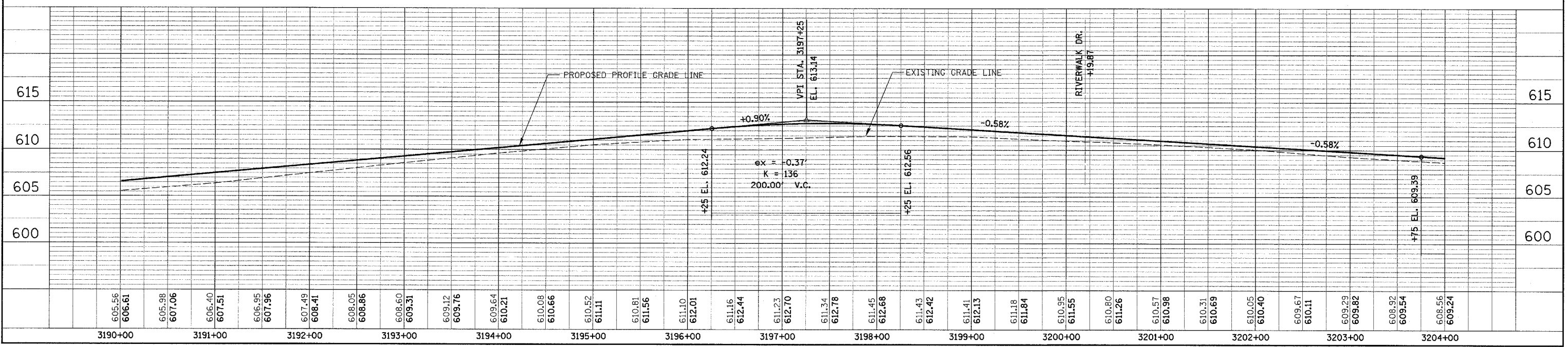
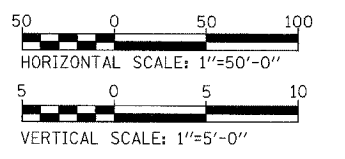
FAP NO.	SECTION	COUNTY	TOTAL SHEETS	SHEET NO.
338 (113 & 114) R-5	WILL		525	183
STA. 3190+00		TO STA. 3204+00		
FED. ROAD DIST. NO.	ILLINOIS	FAP 338 (IL RTE. 59)		



DATE	BY

DATE	BY

NOTES:
 1. DRIVEWAY & GEOMETRICS MATERIAL SHALL BE IN ACCORDANCE WITH IDOT DISTRICT 1 STANDARDS BD-01 AND BD-02.



PLAN /PROFILE - ILLINOIS ROUTE 59