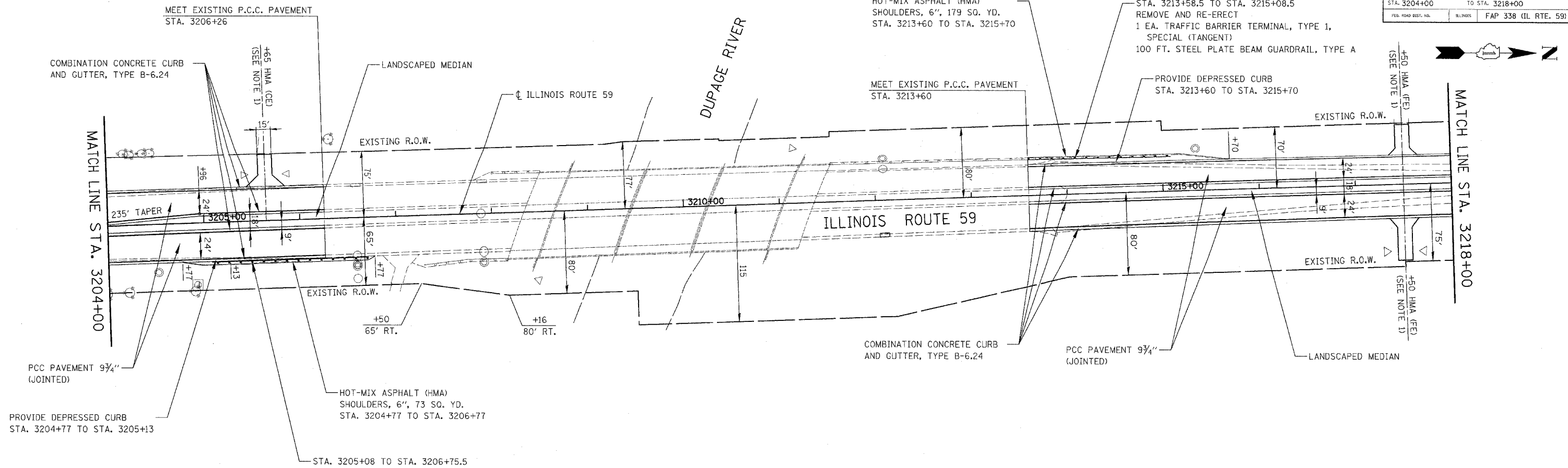
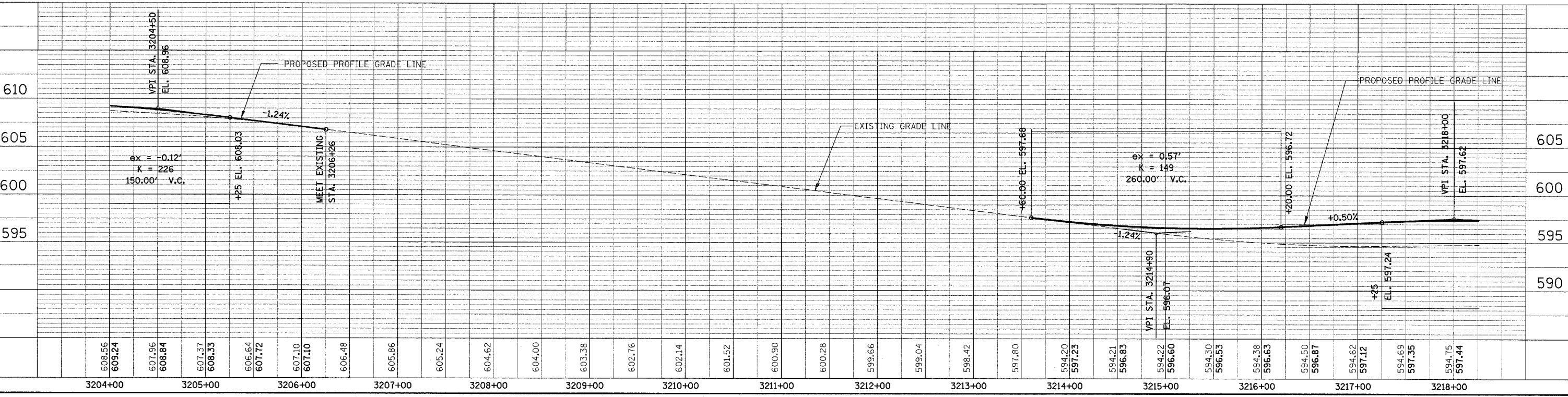
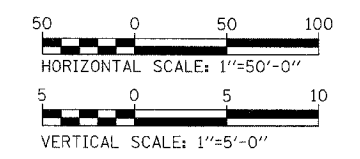


FAP NO.	SECTION	COUNTY	TOTAL SHEETS	SHEET NO.
338	(113 & 114) R-5	WILL	525	184
STA. 3204+00		TO STA. 3218+00		
FED. ROAD DIST. NO.		ILLINOIS	FAP 338 (IL RTE. 59)	



- NOTES:**
- DRIVEWAY & GEOMETRICS MATERIAL SHALL BE IN ACCORDANCE WITH IDOT DISTRICT 1 STANDARDS BD-01 AND BD-02.
 - STA. 3205+08 TO STA. 3206+75.5 REMOVE AND RE-ERECT 1 EA. TRAFFIC BARRIER TERMINAL, TYPE 1, SPECIAL (TANGENT) 100 FT. STEEL PLATE BEAM GUARDRAIL, TYPE A
 - STA. 3213+60 TO STA. 3215+70 REMOVE AND RE-ERECT 1 EA. TRAFFIC BARRIER TERMINAL, TYPE 1, SPECIAL (TANGENT) 100 FT. STEEL PLATE BEAM GUARDRAIL, TYPE A



PLAN / PROFILE - ILLINOIS ROUTE 59

DATE: _____ BY: _____
 SURVEYED: _____
 PLAN: _____
 NOTE BOOK NO. _____
 CHECKED: _____
 DATE: _____

DATE: _____ BY: _____
 PROFILE: _____
 NOTE BOOK NO. _____
 CHECKED: _____
 DATE: _____