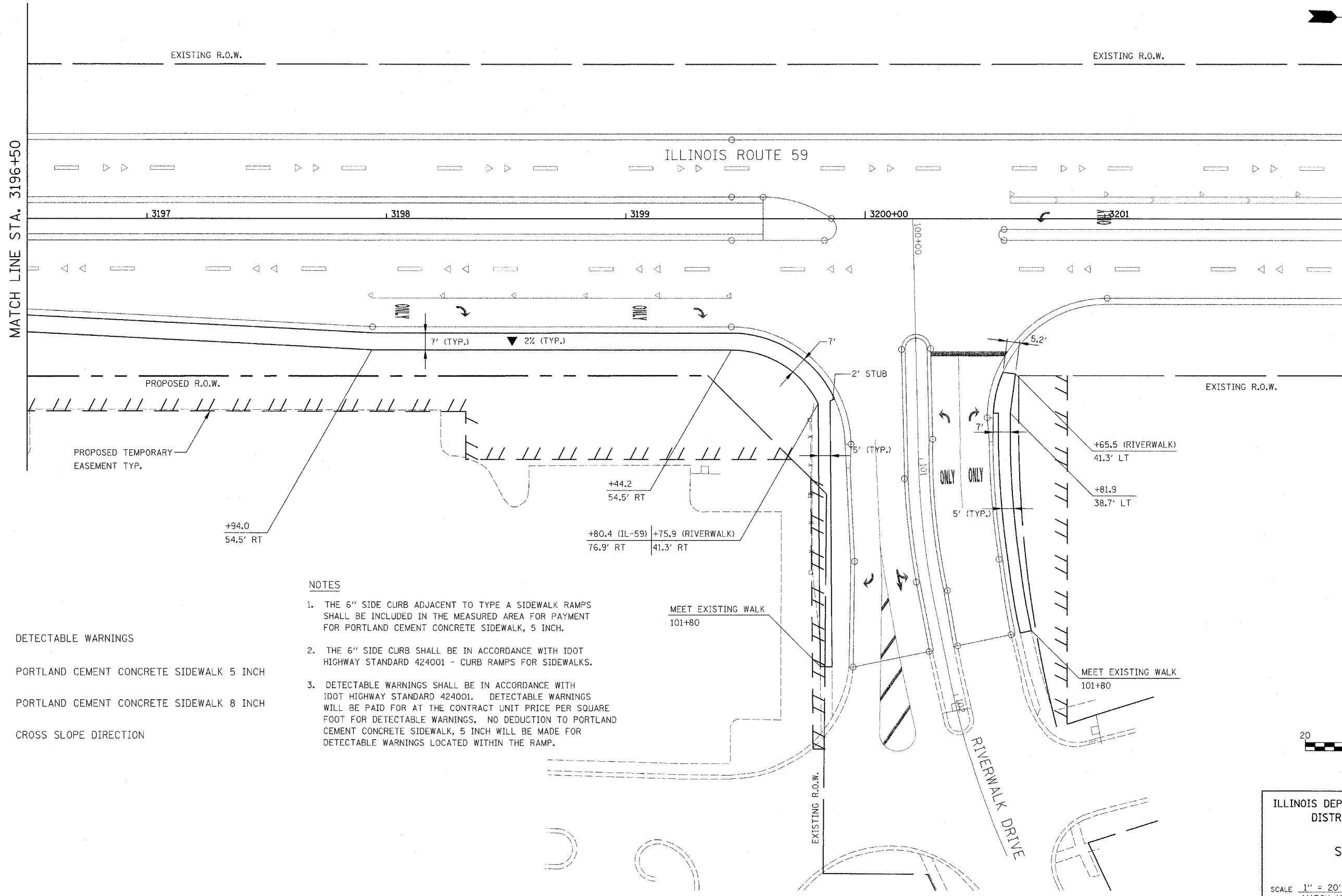
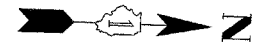


FAP NO.	SECTION	COUNTY	TOTAL SHEETS	SHEET NO.
338	(113 & 114) R-5	WILL	525	196
STA.	TO STA.			
FED. ROAD DIST. NO.	ILLINOIS	FAP 338 (IL RTE. 59)		

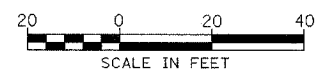


LEGEND

- DETECTABLE WARNINGS
- PORTLAND CEMENT CONCRETE SIDEWALK 5 INCH
- PORTLAND CEMENT CONCRETE SIDEWALK 8 INCH
- CROSS SLOPE DIRECTION

NOTES

1. THE 6" SIDE CURB ADJACENT TO TYPE A SIDEWALK RAMPS SHALL BE INCLUDED IN THE MEASURED AREA FOR PAYMENT FOR PORTLAND CEMENT CONCRETE SIDEWALK, 5 INCH.
2. THE 6" SIDE CURB SHALL BE IN ACCORDANCE WITH IDOT HIGHWAY STANDARD 424001 - CURB RAMPS FOR SIDEWALKS.
3. DETECTABLE WARNINGS SHALL BE IN ACCORDANCE WITH IDOT HIGHWAY STANDARD 424001. DETECTABLE WARNINGS WILL BE PAID FOR AT THE CONTRACT UNIT PRICE PER SQUARE FOOT FOR DETECTABLE WARNINGS. NO DEDUCTION TO PORTLAND CEMENT CONCRETE SIDEWALK, 5 INCH WILL BE MADE FOR DETECTABLE WARNINGS LOCATED WITHIN THE RAMP.



ILLINOIS DEPARTMENT OF TRANSPORTATION
DISTRICT NO. 1 SCHAUMBURG

SIDEWALK PLANS

SCALE 1" = 20'
DATE MARCH 18, 2008

DRAWN BY LL
CHECKED BY PO