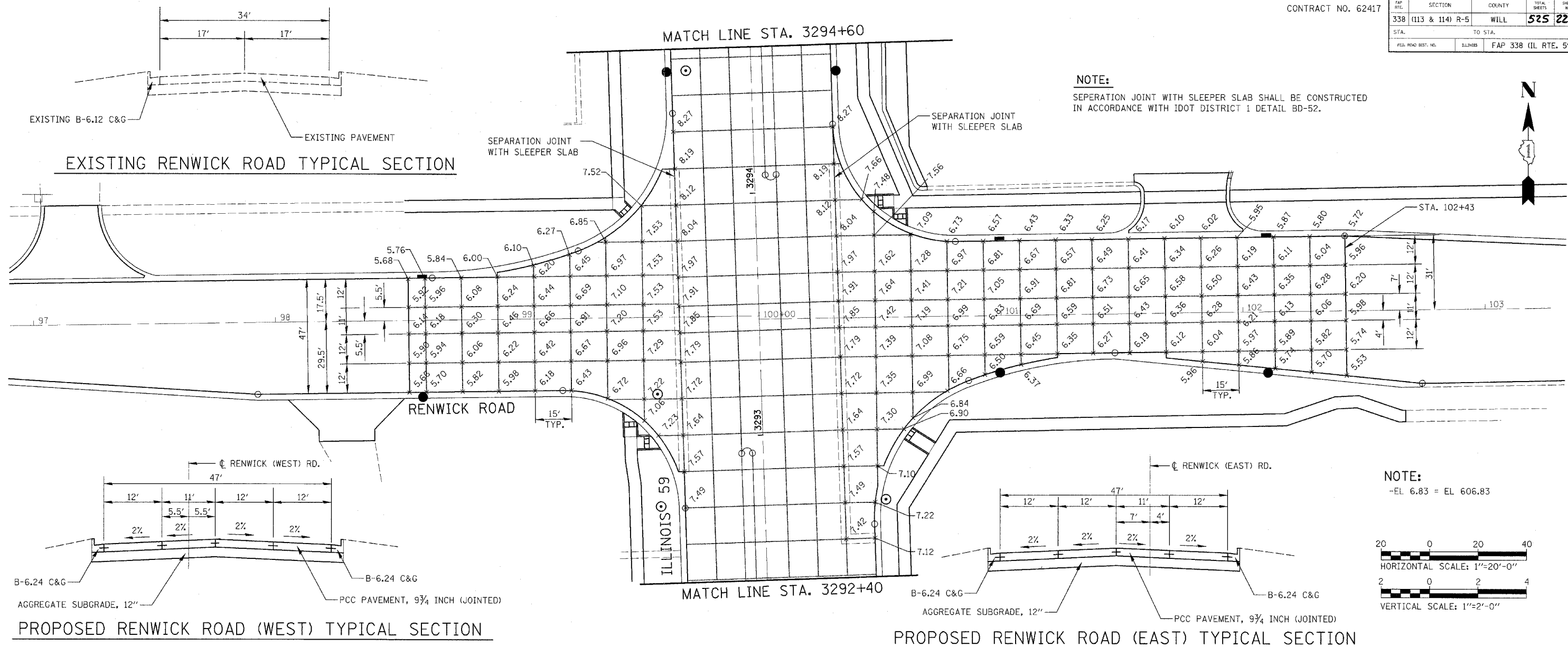
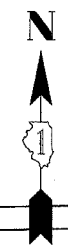
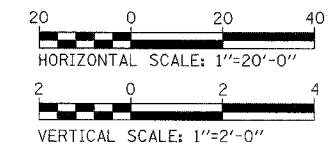


FAP RITE	SECTION	COUNTY	TOTAL SHEETS	SHEET NO.
338	(113 & 114) R-5	WILL	525	223
STA.	TO STA.			
FED. ROAD DIST. NO.	BLINDS	FAP 338 (IL RTE. 59)		

**NOTE:**  
SEPERATION JOINT WITH SLEEPER SLAB SHALL BE CONSTRUCTED IN ACCORDANCE WITH IDOT DISTRICT 1 DETAIL BD-52.

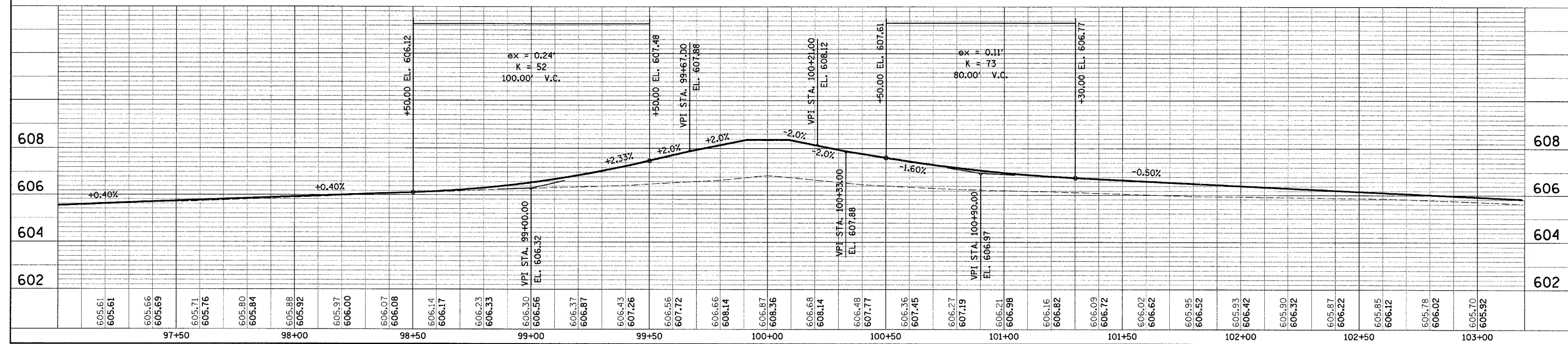


**NOTE:**  
-EL 6.83 = EL 606.83



PLAN	SURVEYED	DATE
	PLOTTED	
	CHECKED	
	BY	
	NO.	

PROFILE	SURVEYED	DATE
	PLOTTED	
	CHECKED	
	BY	
	NO.	



**INTERSECTION DETAILS - RENWICK ROAD**