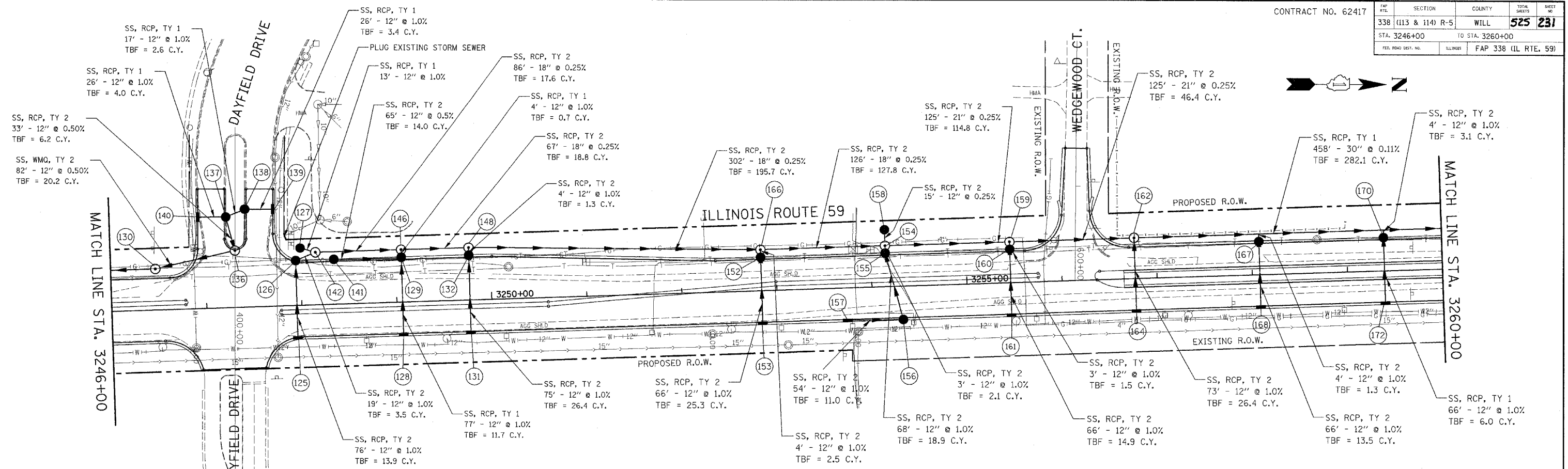


FAP 338	SECTION (113 & 114) R-5	COUNTY WILL	TOTAL SHEETS 525	SHEET NO. 231
STA. 3246+00		TO STA. 3260+00		
FED. ROAD DIST. NO.		ILLINOIS FAP 338 (ILL. RTE. 59)		



PLAN	DATE
BY	
CHECKED	
DATE	

PROFILE	DATE
BY	
CHECKED	
DATE	

NO.	STATION	OFFSET	TYPE	FRAME	RIM	N. INV.	S. INV.	E. INV.	W. INV.
123	NOT USED								
124	NOT USED								
125	3247+95	34' RT	IN-A	T-24	605.30				601.20
126	3247+95	47' LT	CB-A4	T-24	605.00	600.44		600.44	
127	3248+00	60' LT	CB-C	T-8	603.00	600.38			
128	3249+06	34' RT	IN-A	T-24	605.86				601.89
129	3249+06	47' LT	CB-A4	T-24	605.53		601.09	601.09	601.09
130	3246+47	43' LT	MH-A4	T1-CL	604.30	598.79	597.95		
131	3249+77	34' RT	IN-A	T-24	606.21				600.59
132	3249+77	47' LT	CB-A4	T-24	605.91		599.84	599.84	
133-135	NOT USED								
136	3247+31	59.5' LT	MH-A4	T1-CL	604.35		599.20		599.20
137	399+05	10' RT	CB-A4	T-23	603.70	599.53	599.53	599.53	
138	398+97	10' LT	CB-A4	T-23	603.69	599.70	599.70		
139	398+97	39.4' LT	IN-A	T-23	603.62		599.96		
140	399+05	39.4' RT	IN-A	T-23	603.70	599.79			
141	3248+35	47' LT	CB-A4	T-24	605.25	601.42			
142	3248+16	55' LT	MH-A4	T1-CL	604.44	600.00		600.25	600.25
143-145	NOT USED								
146	3249+06	55' LT	MH-A4	T1-CL	604.79	599.79	599.79	601.05	
147	NOT USED								
148	3249+77	55' LT	MH-A4	T1-CL	605.14	599.34	599.62	599.80	
149-151	NOT USED								
152	3252+84	35' LT	CB-A4	T-24	606.22			601.29	601.09
153	3252+84	34' RT	IN-A	T-24	606.22				601.95
154	3254+15	43' LT	MH-A5	T1-CL	604.81	598.29	598.29	599.86	598.32
155	3254+15	35' LT	CB-A4	T-24	605.58			599.89	599.89
156	3254+32	35' RT	CB-A4	T-24	605.50			600.77	600.57
157	3253+74	34' RT	IN-A	T-24	605.78	601.31			
158	3254+15	60' LT	CB-C	T-8	600.77			598.47	
159	3255+46	43' LT	MH-A5	T1-CL	604.17	597.98	597.98	599.66	
160	3255+46	35' LT	CB-A4	T-24	604.94			599.89	599.69
161	3255+46	34' RT	IN-A	T-24	604.94				600.35
162	3256+77	43' LT	MH-A5	T1-CL	603.53	597.67	597.67	598.95	
163	NOT USED								
164	3256+77	34' RT	IN-A	T-24	604.30				599.71
165	NOT USED								
166	3252+84	43' LT	MH-A4	T1-CL	605.45	598.60	598.60	601.05	
167	3258+08	35' LT	CB-A4	T-24	603.65			598.31	598.31
168	3258+08	34' RT	IN-A	T-24	603.65				598.97
169	NOT USED								
170	3259+39	35' LT	CB-A4	T-24	603.01			598.17	598.17
171	NOT USED								
172	3259+39	34' RT	IN-A	T-24	603.01				598.83

