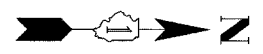


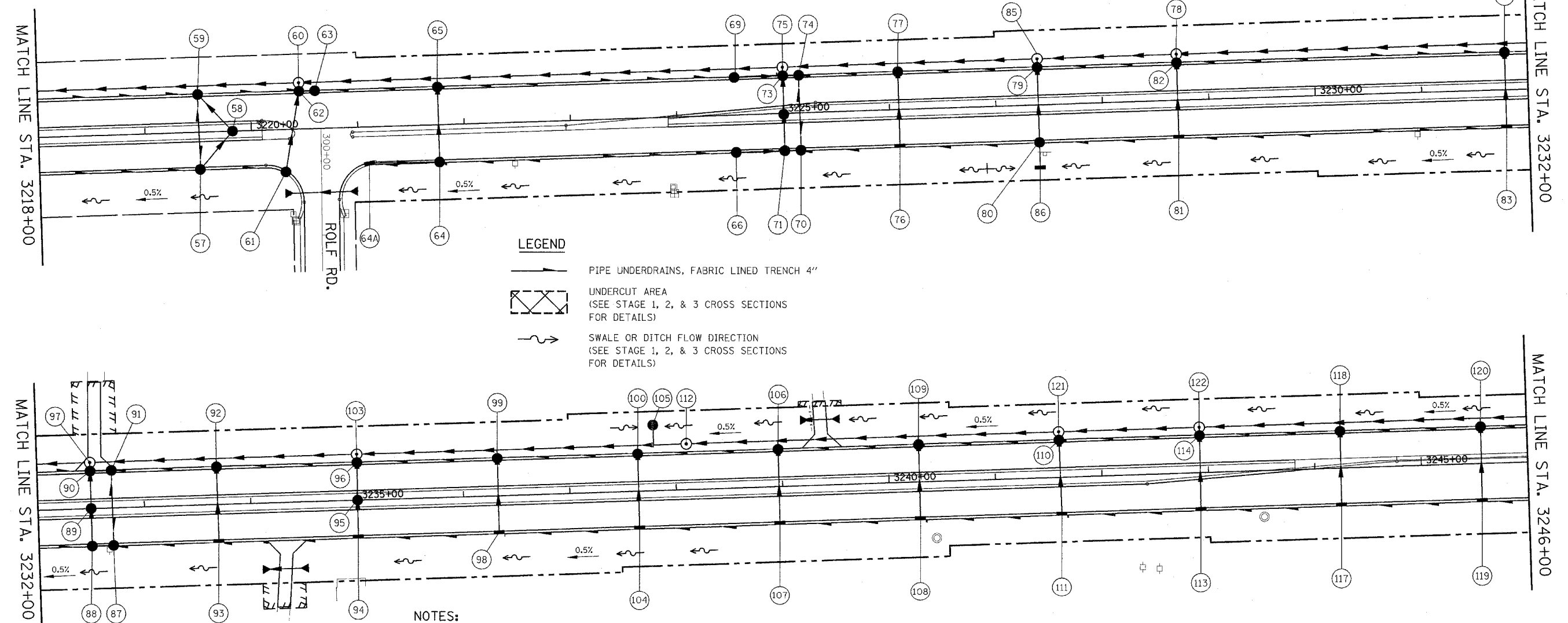
FAP NO.	SECTION	COUNTY	TOTAL SHEETS	SHEET NO.
338	(113 & 114) R-5	WILL	525	240
STA. 3218+00	TO STA. 3246+00			
FED. ROAD DIST. NO.	ILLINOIS	FAP 338 (IL RTE. 59)		



UP STATION	DOWN STATION	RUN LOCATION	P UNDR FAB LINE TR 4 (FT)	DEPTH (IN)	OUTLET STRUCTURE NO.	NOTES
3218+03	3219+46	LT	143		59	
3218+03	3219+46	RT	143		57	
3219+51	3219+51	LT	30		59	
3219+51	3219+51	RT	30		57	
3219+61	3220+41	LT	80		62	
3219+61	3220+26	RT	65		61	
3220+60	3220+55	LT	5		62	
3221+66	3220+66	LT	100		63	
3221+66	3221+15	RT	51		64A	
3223+00	3221+81	LT	119		65	
3223+00	3221+81	RT	119		64	
3223+00	3224+50	LT	150		69	
3223+00	3224+50	RT	150		66	
3224+65	3224+96	LT	31		73	
3224+65	3224+96	RT	31		70	
3225+11	3225+06	LT	5		73	
3225+11	3225+06	RT	5		70	
3225+16	3225+16	LT	30		74	
3225+16	3225+16	RT	30		71	
SUBTOTAL			1317			

UP STATION	DOWN STATION	RUN LOCATION	P UNDR FAB LINE TR 4 (FT)	DEPTH (IN)	OUTLET STRUCTURE NO.	NOTES
3226+00	3225+21	LT	79		74	
3226+00	3225+21	RT	79		71	
3227+30	3226+14	LT	116		77	
3227+30	3226+14	RT	116		76	
3228+59	3227+45	LT	114		79	
3228+59	3227+45	RT	114		80	
3230+24	3228+76	LT	148		82	
3230+24	3228+76	RT	148		81	
3230+24	3231+74	LT	150		84	
3230+24	3231+74	RT	150		83	
3231+89	3232+45	LT	56		90	
3231+89	3232+45	RT	56		88	
3232+65	3232+55	LT	10		90	
3232+65	3232+55	RT	10		88	
3233+57	3232+75	LT	82		91	
3233+57	3232+75	RT	82		87	
3232+70	3232+70	LT	30		91	
3232+70	3232+70	RT	30		87	
3234+89	3233+74	LT	115		92	
SUBTOTAL			1685			

UP STATION	DOWN STATION	RUN LOCATION	P UNDR FAB LINE TR 4 (FT)	DEPTH (IN)	OUTLET STRUCTURE NO.	NOTES
3234+89	3233+74	RT	115		93	
3236+22	3235+06	LT	116		96	
3236+22	3235+06	RT	116		94	
3237+55	3236+38	LT	117		99	
3237+55	3236+38	RT	117		98	
3238+85	3237+70	LT	115		100	
3238+85	3237+70	RT	115		104	
3240+18	3239+02	LT	116		106	
3240+18	3239+02	RT	116		107	
3241+52	3240+34	LT	118		109	
3241+52	3240+34	RT	118		108	
3242+85	3241+66	LT	119		110	
3242+85	3241+66	RT	119		111	
3244+13	3242+98	LT	115		114	
3244+13	3242+98	RT	115		113	
3245+45	3244+30	LT	115		118	
3245+45	3244+30	RT	115		117	
3246+62	3245+62	LT	100		120	
3247+89	3245+62	RT	227		119	
SUBTOTAL			2304			
SHEET TOTAL			5306			



LEGEND

—> PIPE UNDERDRAINS, FABRIC LINED TRENCH 4"

UNDERCUT AREA (SEE STAGE 1, 2, & 3 CROSS SECTIONS FOR DETAILS)

SWALE OR DITCH FLOW DIRECTION (SEE STAGE 1, 2, & 3 CROSS SECTIONS FOR DETAILS)

NOTES:

- SEE TYPICAL SECTION FOR UNDERDRAIN DEPTH INFORMATION.
- POROUS GRANULAR EMBANKMENT, SUBGRADE HAS BEEN PROVIDED FOR USE AT THE LOCATIONS INDICATED FOR SOILS THAT TEND TO BE UNSUITABLE OR UNSTABLE. THE ACTUAL NEED FOR REMOVAL AND REPLACEMENT WITH PGES WILL BE DETERMINED IN THE FIELD AT THE TIME OF CONSTRUCTION BY THE GEOTECHNICAL ENGINEER ALL POTENTIALLY UNSTABLE SOILS SHOULD BE TESTED WITH A STATIC CONE PENETROMETER AND TREATED IN ACCORDANCE WITH ARTICLE 301.04 AND THE IDOT SUBGRADE STABILITY MANUAL (REV. 2005) IF UNSTABLE AND/OR UNSUITABLE MATERIAL IS NOT ENCOUNTERED, THEN THE QUANTITY SHALL BE DEDUCTED AND NO ADDITIONAL COMPENSATION WILL BE DUE TO THE CONTRACTOR.



ILLINOIS DEPARTMENT OF TRANSPORTATION
DISTRICT NO. 1 SCHAUMBURG

PIPE UNDERDRAINS, UNDERCUT AND DITCH/SWALE PLAN

SCALE AS SHOWN
DATE MARCH 18, 2008

DRAWN BY REW
CHECKED BY JCM/HME