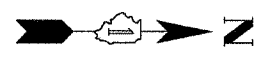


FAP NO.	SECTION	COUNTY	TOTAL SHEETS	SHEET NO.
338	(113 & 114) R-5	WILL	525	248
STA.	TO STA.		FAP 338 (IL RTE. 59)	
FED. ROAD DIST. NO.	ILLINOIS			

CONTRACT NO. 62417

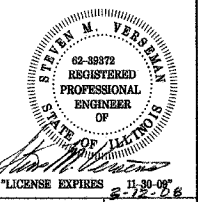
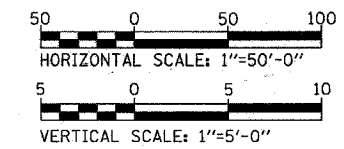
FIRE HYDRANTS

- WM-FH7 FIRE HYDRANT WITH 4 L.F. OF 6" D.I. LEADER PIPE
- WM-FH8 FIRE HYDRANT WITH 3 L.F. OF 6" D.I. LEADER PIPE
- WM-FH9 FIRE HYDRANT WITH 3 L.F. OF 6" D.I. LEADER PIPE
- WM-FH10 FIRE HYDRANT WITH 3 L.F. OF 6" D.I. LEADER PIPE
- WM-FH11 FIRE HYDRANT INSTALLED PARALLEL TO 8" WATER MAIN
- WM-FH12 NOT USED



WATER MAIN FITTINGS (RJT)

- WM-F24 NOT USED
- WM-F25 12" x 6" TEE
- WM-F26 12" - 45° BEND
- WM-F27 12" - 45° BEND
- WM-F28 12" - 90° BEND
- WM-F29 12" - 90° BEND
- WM-F30A 12" - 45° BEND ROLLED UP
- WM-F30B 12" - 45° BEND ROLLED DOWN
- WM-F31 20" x 12" TEE
- WM-F32 20" - 45° BEND
- WM-F33 20" x 12" TEE ROLLED DOWN
- WM-F34 20" - 45° BEND
- WM-F35 20" x 6" TANGENTIAL WELDED-ON OUTLET TEE
- WM-F36 20" x 8" TEE ROLLED DOWN
- WM-F37 20" x 6" TANGENTIAL WELDED-ON OUTLET TEE
- WM-F38 20" x 6" TANGENTIAL WELDED-ON OUTLET TEE
- WM-F39 NOT USED
- WM-F40 20" x 12" REDUCER
- WM-F41 12" - 45° BEND
- WM-F42 12" - 45° BEND
- WM-F43 12" CUTTING-IN SLEEVE
- WM-F44 NOT USED
- WM-F45 12" - 11 1/4° BEND ROLLED UP
- WM-F46 12" - 45° BEND
- WM-F47 12" - 90° BEND
- WM-F48 8" - 45° BEND ROLLED UP
- WM-F49 8" x 6" HYDRANT TEE
- WM-F50 8" - 90° BEND
- WM-F51 8" - 90° BEND
- WM-F52 8" CUTTING-IN SLEEVE
- WM-F53 NOT USED



WATER MAIN PIPE

- WM-P18 NOT USED
- WM-P19 250 L.F. OF 12" WATER MAIN
- WM-P20 180 L.F. OF 12" WATER MAIN (RJT)
- WM-P21 60 L.F. OF 12" WATER MAIN (RJT) INSIDE 24" CASING PIPE INSTALLED BY BORING OR RAMMING, WITH PIPE /CASING CENTERED ON ADJACENT HOUSE
- WM-P22 60 L.F. OF 12" WATER MAIN (RJT)
- WM-P23 65 L.F. OF 12" WATER MAIN (RJT) INSIDE 24" CASING PIPE, A MINIMUM OF 50 L.F. OF CASING TO BE INSTALLED BY BORING OR RAMMING. REMAINDER OF CASING CAN BE INSTALLED IN OPEN-CUT TRENCH. PROVIDE SHORTER SECTIONS OF CASING PIPE & SHORTER BORING/RAMMING PIT AS REQUIRED TO MAINTAIN CONSTRUCTION WITHIN RENWICK ROAD RIGHT-OF-WAY.
- WM-P24 90 L.F. OF 20" WATER MAIN (RJT)
- WM-P25 740 L.F. OF 20" WATER MAIN NOTE: 740 L.F. CONSISTS OF 710 L.F. INSTALLED IN OPEN CUT TRENCH & THREE (3) 10 L.F. LENGTHS INSTALLED INSIDE 36" CASING PIPE IN OPEN CUT TRENCH UNDER CB #280, CB #293 & CB # 302. PROVIDE 20" RJT PIPE INSIDE CASING PIPES IF JOINT(S) WILL BE LOCATED WITHIN CASING PIPE.
- WM-P26 30 L.F. OF 20" WATER MAIN (RJT) PROVIDE ONE FULL LENGTH PIPE BETWEEN WM-V15 & WM-F40
- WM-P27 10 L.F. OF 12" WATER MAIN (RJT)
- WM-P28 110 L.F. OF 12" WATER MAIN (RJT) INSIDE 24" CASING PIPE A MINIMUM OF 80 L.F. OF CASING TO BE INSTALLED BY BORING OR RAMMING, REMAINDER OF CASING CAN BE INSTALLED IN OPEN-CUT TRENCH.
- WM-P29 40 L.F. OF 12" WATER MAIN (RJT)
- WM-P30 120 L.F. OF 8" WATER MAIN (RJT) INSIDE 24" CASING PIPE A MINIMUM OF 75 L.F. OF CASING TO BE INSTALLED BY BORING OR RAMMING, REMAINDER OF CASING CAN BE INSTALLED IN OPEN-CUT TRENCH.
- WM-P31 40 L.F. OF 8" WATER MAIN (RJT)
- WM-P32 NOT USED

WATER MAIN VALVES

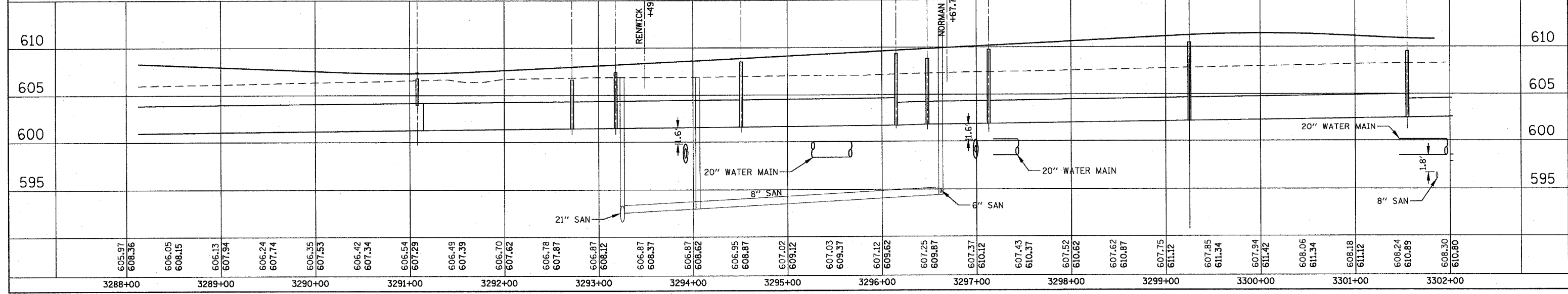
- WM-V12 12" GATE VALVE INSTALLED ADJACENT TO WM-F31, WITH VALVE & FITTING INSIDE 6 FOOT DIAMETER VALVE VAULT WITH ECCENTRIC CONE. LOCATE ECCENTRIC CONE WITH OPENING CENTERED OVER VALVE OPERATING NUT.
- WM-V13 20" BUTTERFLY VALVE IN 6 FOOT DIAMETER VALVE VAULT WITH ECCENTRIC CONE. LOCATE ECCENTRIC CONE WITH OPENING CENTERED OVER VALVE OPERATING NUT.
- WM-V14 20" BUTTERFLY VALVE IN 6 FOOT DIAMETER VALVE VAULT WITH ECCENTRIC CONE. LOCATE ECCENTRIC CONE WITH OPENING CENTERED OVER VALVE OPERATING NUT.
- WM-V15 20" BUTTERFLY VALVE IN 6 FOOT DIAMETER VALVE VAULT WITH ECCENTRIC CONE. LOCATE ECCENTRIC CONE WITH OPENING CENTERED OVER VALVE OPERATING NUT.
- WM-V16 12" x 12" TAPPING SLEEVE & 12" TAPPING VALVE WITH CONCRETE THRUST BLOCK IN 6 FOOT DIAMETER VALVE VAULT.
- WM-V17 8" GATE VALVE IN 4 FOOT DIAMETER VALVE VAULT
- WM-V18 NOT USED

SANITARY SEWER MANHOLES

- SA-MH1 4 FOOT DIAMETER SANITARY SEWER MANHOLE APPROXIMATELY 15.5 FEET DEEP

SANITARY SEWER PIPE

- SA-P2 APPROXIMATELY 80 L.F. OF 8" SANITARY SEWER, BETWEEN 15.5 & 15 FEET DEEP. CONSTRUCT WITH WATER MAIN QUALITY P.V.C. PIPE. CONNECT TO EXISTING SANITARY SEWER MANHOLE AT SOUTH SIDE OF RENWICK ROAD & TO NEW SA-MH1. INSTALL NEW PIPE WITH A UNIFORM SLOPE TO MATCH EXISTING SANITARY SEWER INVERT ELEVATIONS AT THE EXISTING MANHOLES.
- SA-P3 APPROXIMATELY 255 L.F. OF 8" SANITARY SEWER, BETWEEN 15 AND 14.5 FEET DEEP. CONSTRUCT WITH WATER MAIN QUALITY P.V.C. PIPE. CONNECT TO NEW SA-MH1 & TO EXISTING SANITARY SEWER MANHOLE AT DRIVEWAY. INSTALL NEW PIPE WITH A UNIFORM SLOPE TO MATCH EXISTING SANITARY SEWER INVERT ELEVATIONS AT THE EXISTING MANHOLES.



WATER MAIN AND SANITARY SEWER REPLACEMENT PLAN /PROFILE - ILLINOIS ROUTE 59