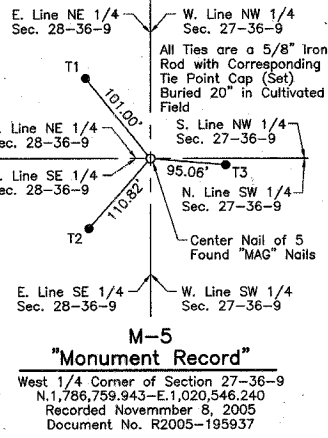
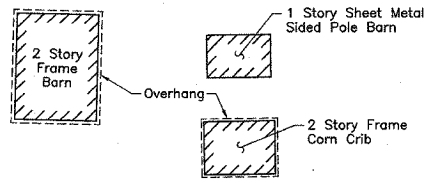
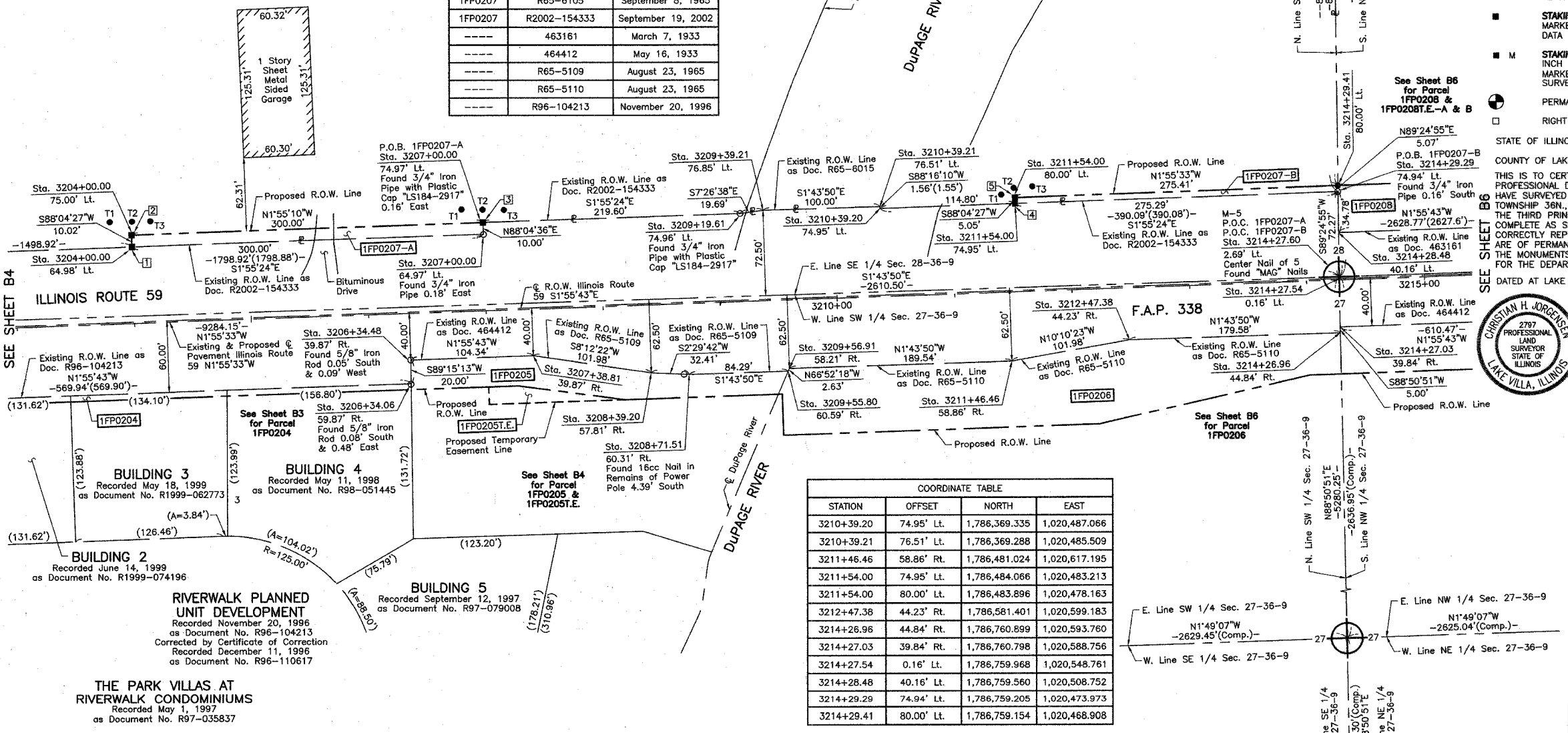


Point Number	Tie to point	Tie Distance (feet)
1	T1 T2 T3	28.50 21.57 26.92
2	T1 T2 T3	21.79 11.55 19.95
3	T1 T2 T3	21.38 10.93 20.63
4	T1 T2 T3	14.00 13.19 20.62
5	T1 T2 T3	11.86 8.14 17.60



See Sheet B45 for Total Holdings Parcel 1FP0207-A & B

Parcel	Document No.	Date Recorded
1FP0207	R65-6105	September 8, 1965
1FP0207	R2002-154333	September 19, 2002
---	463161	March 7, 1933
---	464412	May 16, 1933
---	R65-5109	August 23, 1965
---	R65-5110	August 23, 1965
---	R96-104213	November 20, 1996



THIS IS TO CERTIFY THAT WE, JORGENSEN & ASSOCIATES, INC., AN ILLINOIS PROFESSIONAL DESIGN FIRM LAND SURVEYING CORPORATION, NUMBER 184-2771, HAVE SURVEYED THE PLAT OF HIGHWAYS SHOWN HEREON BETWEEN SECTION 27, TOWNSHIP 36N., RANGE 9E. AND SECTION 28, TOWNSHIP 36N., RANGE 9E., OF THE THIRD PRINCIPAL MERIDIAN, WILL COUNTY, THAT THE SURVEY IS TRUE AND COMPLETE AS SHOWN TO THE BEST OF MY KNOWLEDGE AND BELIEF, THAT THE PLAT CORRECTLY REPRESENTS SAID SURVEY, THAT ALL MONUMENTS FOUND AND ESTABLISHED ARE OF PERMANENT QUALITY AND OCCUPY THE POSITIONS SHOWN THEREON AND THAT THE MONUMENTS ARE SUFFICIENT TO ENABLE THE SURVEY TO BE RETRACED. MADE FOR THE DEPARTMENT OF TRANSPORTATION, STATE OF ILLINOIS.

DATED AT LAKE VILLA, ILLINOIS THIS 9th DAY OF November 20, 2005 A.D.



CHRISTIAN H. JORGENSEN
PRESIDENT
ILLINOIS PROFESSIONAL LAND SURVEYOR NO. 35-2797
LICENSE EXPIRATION DATE: NOVEMBER 30, 2006
THIS PROFESSIONAL SERVICE CONFORMS TO THE CURRENT ILLINOIS MINIMUM STANDARDS FOR A BOUNDARY SURVEY.
Coordinates are based on the Published Metric Coordinate Values at Found Geodetic Survey Control Monument "Will County GPS 333", P.I.D. AE2553, of N.542,285.095 - E.311,129.617.
NOTE: SURFACE COORDINATES ARE SHOWN.

STATION	OFFSET	NORTH	EAST
3204+00.00	64.98' Lt.	1,785,730.827	1,020,518.515
3204+00.00	75.00' Rt.	1,785,730.490	1,020,508.499
3206+34.06	59.87' Rt.	1,785,968.954	1,020,635.432
3206+34.48	39.87' Rt.	1,785,968.693	1,020,615.429
3207+00.00	64.97' Lt.	1,786,030.661	1,020,508.445
3207+00.00	74.97' Lt.	1,786,030.325	1,020,498.451
3207+38.81	39.87' Rt.	1,786,072.973	1,020,611.918
3208+39.20	57.81' Rt.	1,786,173.909	1,020,626.474
3208+71.51	60.31' Rt.	1,786,206.285	1,020,627.884
3209+19.61	74.96' Lt.	1,786,249.806	1,020,491.080
3209+39.21	76.85' Lt.	1,786,269.331	1,020,488.529
3209+55.80	60.59' Rt.	1,786,290.534	1,020,625.339
3209+56.91	58.21' Rt.	1,786,291.568	1,020,622.919

STATION	OFFSET	NORTH	EAST
3210+39.20	74.95' Lt.	1,786,369.335	1,020,487.066
3210+39.21	76.51' Lt.	1,786,369.288	1,020,485.509
3211+46.46	58.86' Rt.	1,786,481.024	1,020,617.195
3211+54.00	74.95' Lt.	1,786,484.066	1,020,483.213
3211+54.00	80.00' Lt.	1,786,483.896	1,020,478.163
3212+47.38	44.23' Rt.	1,786,581.401	1,020,599.183
3214+26.96	44.84' Rt.	1,786,760.899	1,020,593.760
3214+27.03	39.84' Rt.	1,786,760.798	1,020,588.756
3214+27.54	0.16' Lt.	1,786,759.968	1,020,548.761
3214+28.48	40.16' Lt.	1,786,759.560	1,020,508.752
3214+29.29	74.94' Lt.	1,786,759.205	1,020,473.973
3214+29.41	80.00' Lt.	1,786,759.154	1,020,468.908

PARCEL NUMBER	OWNER	TOTAL HOLDINGS ACRES	PART TAKEN ACRES	AREA IN EXISTING R.O.W. ACRES	REMAINDER AREA ACRES	EASEMENT AREA ACRES	EASEMENT PURPOSE	PERMANENT INDEX NUMBER	PROPERTY ACQUIRED BY
1FP0207-A	Joliet Park District, a Municipal Corporation	169.217*	A=0.069 B=0.032	N/A	169.116*	N/A	N/A	06-03-28-400-002	

* Riparian Boundary, Area Subject to Change.

PLAT OF HIGHWAYS STATE OF ILLINOIS DEPARTMENT OF TRANSPORTATION F.A.P. 338 (ILLINOIS ROUTE 59)

SECTION 27 WILL COUNTY
PROJECT JOB NO. R-91-067-01
STATION 3203+00 TO STATION 3215+00
SCALE: 1"=50' SHEET 85 OF 85

BUREAU OF LAND ACQUISITION 201 WEST CENTER COURT SCHAUMBURG, ILLINOIS 60196

BY: [Signature] DATE: [Blank]
MADE: [Blank] CHECKED: [Blank] INKED: [Blank]
ROW PLAT: [Blank] NOTEBOOK: [Blank] NO: [Blank]

THE PARK VILLAS AT RIVERWALK CONDOMINIUMS
Recorded May 1, 1997
as Document No. R97-035837

RIVERWALK PLANNED UNIT DEVELOPMENT
Recorded November 20, 1996
as Document No. R96-104213
Corrected by Certificate of Correction
Recorded December 11, 1996
as Document No. R96-110617

BUILDING 2
Recorded June 14, 1999
as Document No. R1999-074196

BUILDING 3
Recorded May 18, 1999
as Document No. R1999-062773

BUILDING 4
Recorded May 11, 1998
as Document No. R98-051445

BUILDING 5
Recorded September 12, 1997
as Document No. R97-079008

REVISION DATE

REVISION

RECEIVED
OCT 15 2007
PLATS & LEGALS

MADE BY