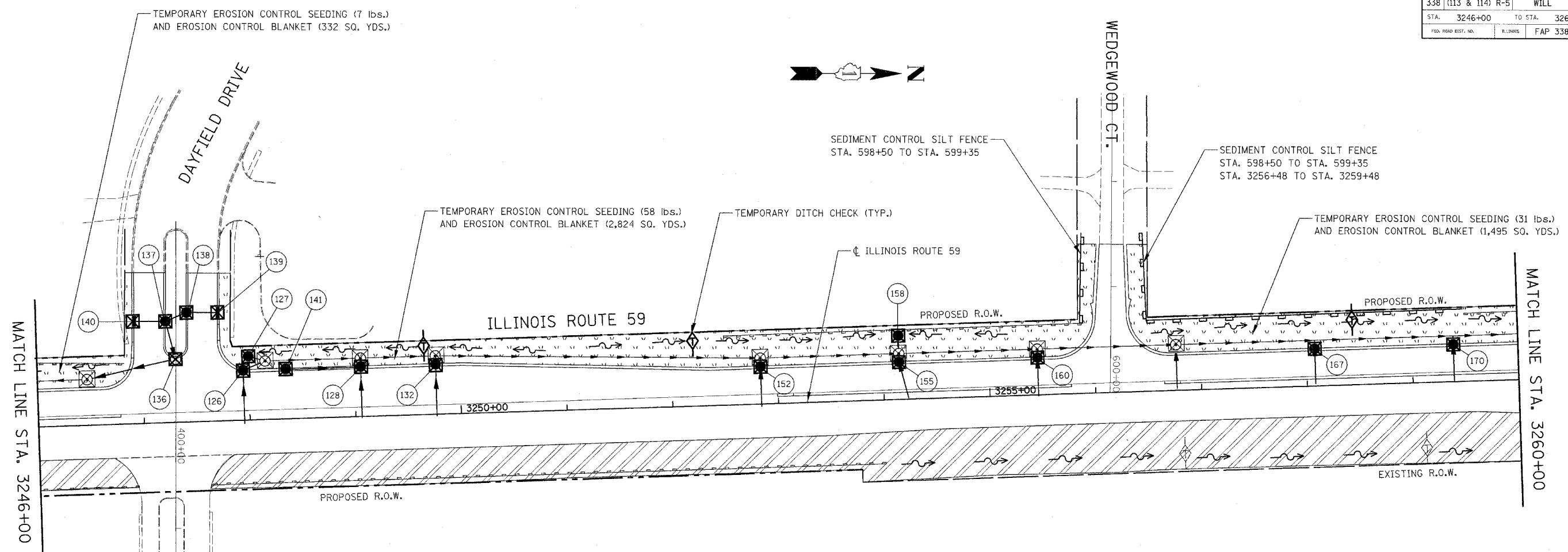


F.P. NO.	SECTION	COUNTY	TOTAL SHEETS	SHEET NO.
338	(113 & 114) R-5	WILL	525	335
STA. 3246+00		TO STA. 3260+00		
FED. ROAD DIST. NO.		ILLINOIS		
F.P. NO.		FAP 338 (IL RTE. 59)		

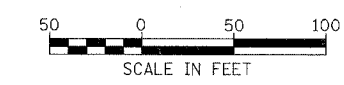


**EROSION CONTROL LEGEND**

- |  |   |  |  |
|--|---|--|--|
|  | TEMPORARY EROSION CONTROL SEEDING AND EROSION CONTROL BLANKET                             |  | TEMPORARY DITCH CHECK                              |
|  | TEMPORARY EROSION CONTROL SEEDING AND EROSION CONTROL BLANKET INSTALLED IN PREVIOUS STAGE |  | TEMPORARY DITCH CHECK INSTALLED IN PREVIOUS STAGE  |
|  | PERMANENT LANDSCAPING (SEE NOTE 3)  |  | FLOW DIRECTION (SEE NOTE 4)                        |
|  | TEMPORARY PAVEMENT  |  | PERMANENT DRAINAGE STRUCTURE NUMBER (SEE NOTE 5)   |
|  | DRAINAGE STRUCTURE TO BE CLEANED  |  | PROPOSED STORM SEWER (SEE NOTE 5)                  |
|  | SEDIMENT CONTROL, SILT FENCE (SEE NOTE 2)   |  | PROPOSED STORM SEWER INSTALLED IN PREVIOUS STAGE   |
|  | SEDIMENT CONTROL SILT FENCE INSTALLED IN PREVIOUS STAGE                                   |  | TEMPORARY PIPE CULVERT                             |
|  | INLET FILTER  |  | TEMPORARY PIPE CULVERT INSTALLED IN PREVIOUS STAGE |
|  | INLET FILTER INSTALLED IN PREVIOUS STAGE  |  |  |

**NOTES**

1. THE CONSTRUCTION LIMITS WILL BE STAKED BY THE ENGINEER PRIOR TO COMMENCING CONSTRUCTION. THE CONSTRUCTION LIMITS MAY BE ADJUSTED BY THE ENGINEER TO PRESERVE TREES AND NO ADDITIONAL COMPENSATION WILL BE PAID TO THE CONTRACTOR FOR CHANGED CONSTRUCTION LIMITS.
2. SEDIMENT CONTROL, SILT FENCE SHALL BE ERECTED ADJACENT TO R.O.W., EASEMENT, AND CONSTRUCTION LIMITS AND AS DIRECTED BY THE ENGINEER.
3. SEE LANDSCAPING PLANS FOR LANDSCAPING REQUIREMENTS.
4. SEE STAGE 1 CROSS SECTIONS FOR GRADING INFORMATION.
5. SEE PROPOSED DRAINAGE PLANS FOR STORM SEWER INFORMATION.



ILLINOIS DEPARTMENT OF TRANSPORTATION  
DISTRICT NO. 1 SCHAUMBURG

**EROSION CONTROL PLAN**  
STAGE 1, 1A, 1B AND 1C  
ILLINOIS ROUTE 59

SCALE AS SHOWN  
DATE MARCH 18, 2008

DRAWN BY BSB  
CHECKED BY HME