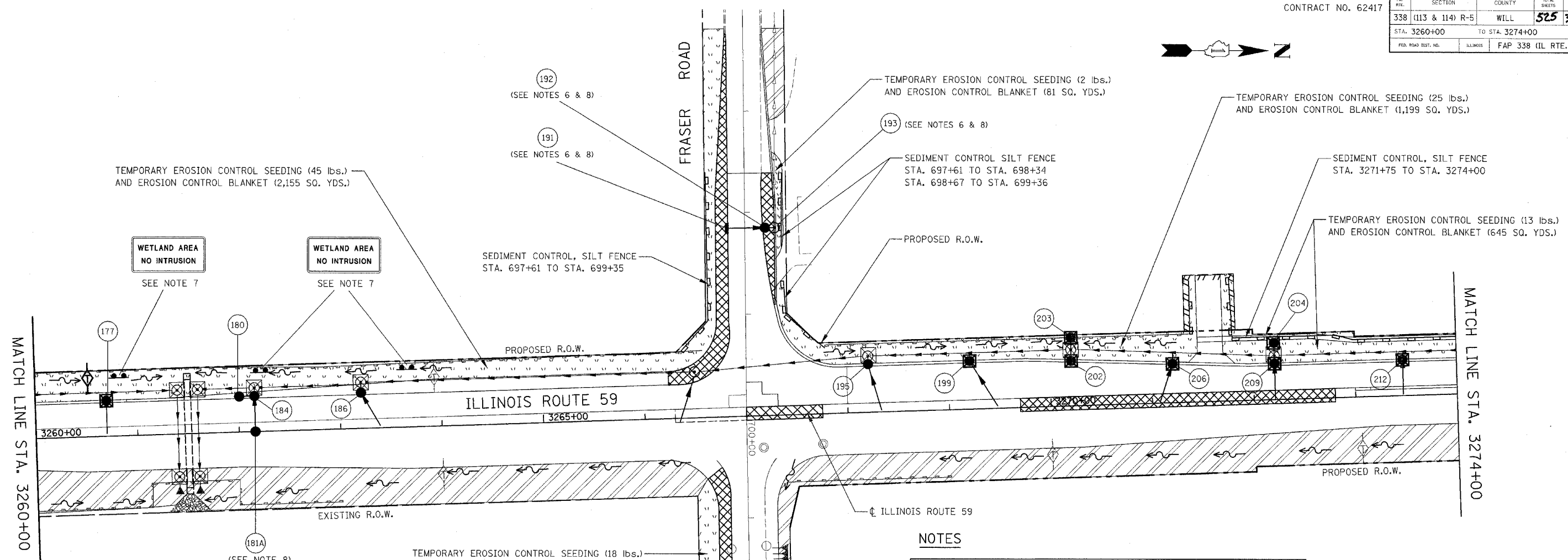
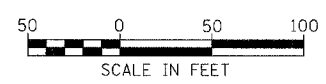


MAP SHEET NO.	SECTION	COUNTY	TOTAL SHEETS	SHEET NO.
338	(113 & 114) R-5	WILL	525	336
STA. 3260+00		TO STA. 3274+00		
FED. ROAD DIST. NO.	ILLINOIS	FAP 338 (IL RTE. 59)		



EROSION CONTROL LEGEND

- | | | | |
|--|---|--|--|
| | TEMPORARY EROSION CONTROL SEEDING AND EROSION CONTROL BLANKET | | TEMPORARY DITCH CHECK |
| | TEMPORARY EROSION CONTROL SEEDING AND EROSION CONTROL BLANKET INSTALLED IN PREVIOUS STAGE | | TEMPORARY DITCH CHECK INSTALLED IN PREVIOUS STAGE |
| | PERMANENT LANDSCAPING (SEE NOTE 3) | | FLOW DIRECTION (SEE NOTE 4) |
| | TEMPORARY PAVEMENT | | PERMANENT DRAINAGE STRUCTURE NUMBER (SEE NOTE 5) |
| | DRAINAGE STRUCTURE TO BE CLEANED | | PROPOSED STORM SEWER (SEE NOTE 5) |
| | SEDIMENT CONTROL, SILT FENCE (SEE NOTE 2) | | PROPOSED STORM SEWER INSTALLED IN PREVIOUS STAGE |
| | SEDIMENT CONTROL SILT FENCE INSTALLED IN PREVIOUS STAGE | | TEMPORARY PIPE CULVERT |
| | INLET FILTER | | TEMPORARY PIPE CULVERT INSTALLED IN PREVIOUS STAGE |
| | INLET FILTER INSTALLED IN PREVIOUS STAGE | | |



NOTES

1. THE CONSTRUCTION LIMITS WILL BE STAKED BY THE ENGINEER PRIOR TO COMMENCING CONSTRUCTION. THE CONSTRUCTION LIMITS MAY BE ADJUSTED BY THE ENGINEER TO PRESERVE TREES AND NO ADDITIONAL COMPENSATION WILL BE PAID TO THE CONTRACTOR FOR CHANGED CONSTRUCTION LIMITS.
2. SEDIMENT CONTROL, SILT FENCE SHALL BE ERECTED ADJACENT TO R.O.W., EASEMENT, AND CONSTRUCTION LIMITS AND AS DIRECTED BY THE ENGINEER.
3. SEE LANDSCAPING PLANS FOR LANDSCAPING REQUIREMENTS.
4. SEE STAGE 1 CROSS SECTIONS FOR GRADING INFORMATION.
5. SEE PROPOSED DRAINAGE PLANS FOR STORM SEWER INFORMATION.
6. ANY REQUIRED ADJUSTMENT AND/OR RECONSTRUCTION OF THE PROPOSED STRUCTURE TO FINAL RIM ELEVATION SHALL NOT BE PAID FOR SEPERATELY. THE COST FOR THIS WORK SHALL BE INCLUDED IN THE COST OF THE PROPOSED STRUCTURE.
7. CONTRACTOR SHALL ERECT SIGNS AS DIRECTED BY THE ENGINEER. COST OF ERECTING SIGNS SHALL BE CONSIDERED INCLUDED IN THE COST OF SEDIMENT CONTROL SILT FENCE. THE SIGNS WILL BE SUPPLIED BY IDOT. THE CONTRACTOR SHALL CONTACT RICK WANNER AT (847) 705-4172 WHEN SIGNS ARE NEEDED. THE SIGN SHALL REMAIN IN PLACE WHILE WORK IS BEING DONE IN THIS AREA, AND SHALL BE TAKEN DOWN ONLY WHEN DIRECTED BY THE ENGINEER.
8. PROPOSED STRUCTURE SHALL BE BURIED AND TEMPORARILY COVERED WITH STEEL PLATE OF 0.25 INCH MINIMUM THICKNESS OR OF THICKNESS SPECIFIED AND APPROVED BY THE ENGINEER. PAYMENT FOR THE INSTALLATION AND REMOVAL OF THE STEEL PLATE INCLUDING ANY REQUIRED EXCAVATION SHALL BE CONSIDERED INCLUDED IN THE COST OF THE PROPOSED STRUCTURE.

ILLINOIS DEPARTMENT OF TRANSPORTATION
 DISTRICT NO. 1 SCHAUMBURG
EROSION CONTROL PLAN
 STAGE 1, 1A, 1B AND 1C
 ILLINOIS ROUTE 59
 SCALE AS SHOWN
 DATE MARCH 18, 2008
 DRAWN BY BSB
 CHECKED BY HME