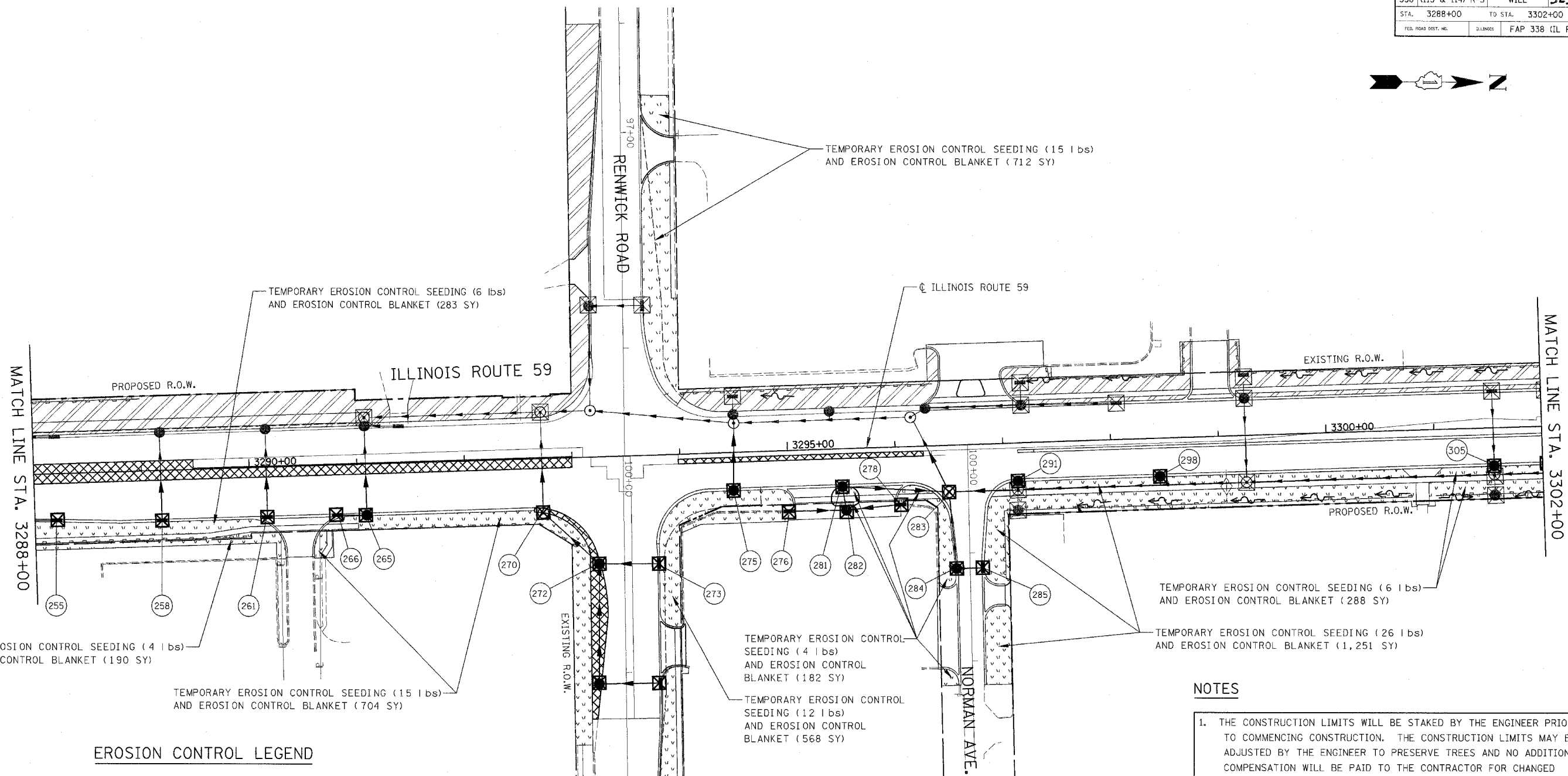


FAP NO.	SECTION	COUNTY	TOTAL SHEETS	SHEET NO.
338	(113 & 114) R-5	WILL	525	348
STA.	3288+00	TO STA.	3302+00	
FED. ROAD DIST. NO.	ILLINOIS	FAP 338 (IL RTE. 59)		

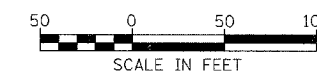


**EROSION CONTROL LEGEND**

	TEMPORARY EROSION CONTROL SEEDING AND EROSION CONTROL BLANKET		TEMPORARY DITCH CHECK
	TEMPORARY EROSION CONTROL SEEDING AND EROSION CONTROL BLANKET INSTALLED IN PREVIOUS STAGE		TEMPORARY DITCH CHECK INSTALLED IN PREVIOUS STAGE
	PERMANENT LANDSCAPING (SEE NOTE 3)		FLOW DIRECTION (SEE NOTE 4)
	DRAINAGE STRUCTURE TO BE CLEANED		PERMANENT DRAINAGE STRUCTURE NUMBER (SEE NOTE 5)
	SEDIMENT CONTROL, SILT FENCE (SEE NOTE 2)		PROPOSED STORM SEWER (SEE NOTE 5)
	SEDIMENT CONTROL SILT FENCE INSTALLED IN PREVIOUS STAGE		PROPOSED STORM SEWER INSTALLED IN PREVIOUS STAGE
	INLET FILTER		TEMPORARY PIPE CULVERT
	INLET FILTER INSTALLED IN PREVIOUS STAGE		TEMPORARY PIPE CULVERT INSTALLED IN PREVIOUS STAGE

**NOTES**

1. THE CONSTRUCTION LIMITS WILL BE STAKED BY THE ENGINEER PRIOR TO COMMENCING CONSTRUCTION. THE CONSTRUCTION LIMITS MAY BE ADJUSTED BY THE ENGINEER TO PRESERVE TREES AND NO ADDITIONAL COMPENSATION WILL BE PAID TO THE CONTRACTOR FOR CHANGED CONSTRUCTION LIMITS.
2. SEDIMENT CONTROL, SILT FENCE SHALL BE ERECTED ADJACENT TO R.O.W., EASEMENT, AND CONSTRUCTION LIMITS AND AS DIRECTED BY THE ENGINEER.
3. SEE LANDSCAPING PLANS FOR LANDSCAPING REQUIREMENTS.
4. SEE STAGE 2 CROSS SECTIONS FOR GRADING INFORMATION.
5. SEE PROPOSED DRAINAGE PLANS FOR STORM SEWER INFORMATION.



ILLINOIS DEPARTMENT OF TRANSPORTATION  
 DISTRICT NO. 1 SCHAUMBURG  
 EROSION CONTROL PLAN  
 STAGES 2, 2A, 2B, 2C & 2D  
 ILLINOIS ROUTE 59

SCALE AS SHOWN  
 DATE MARCH 18, 2008  
 DRAWN BY REW  
 CHECKED BY JCM