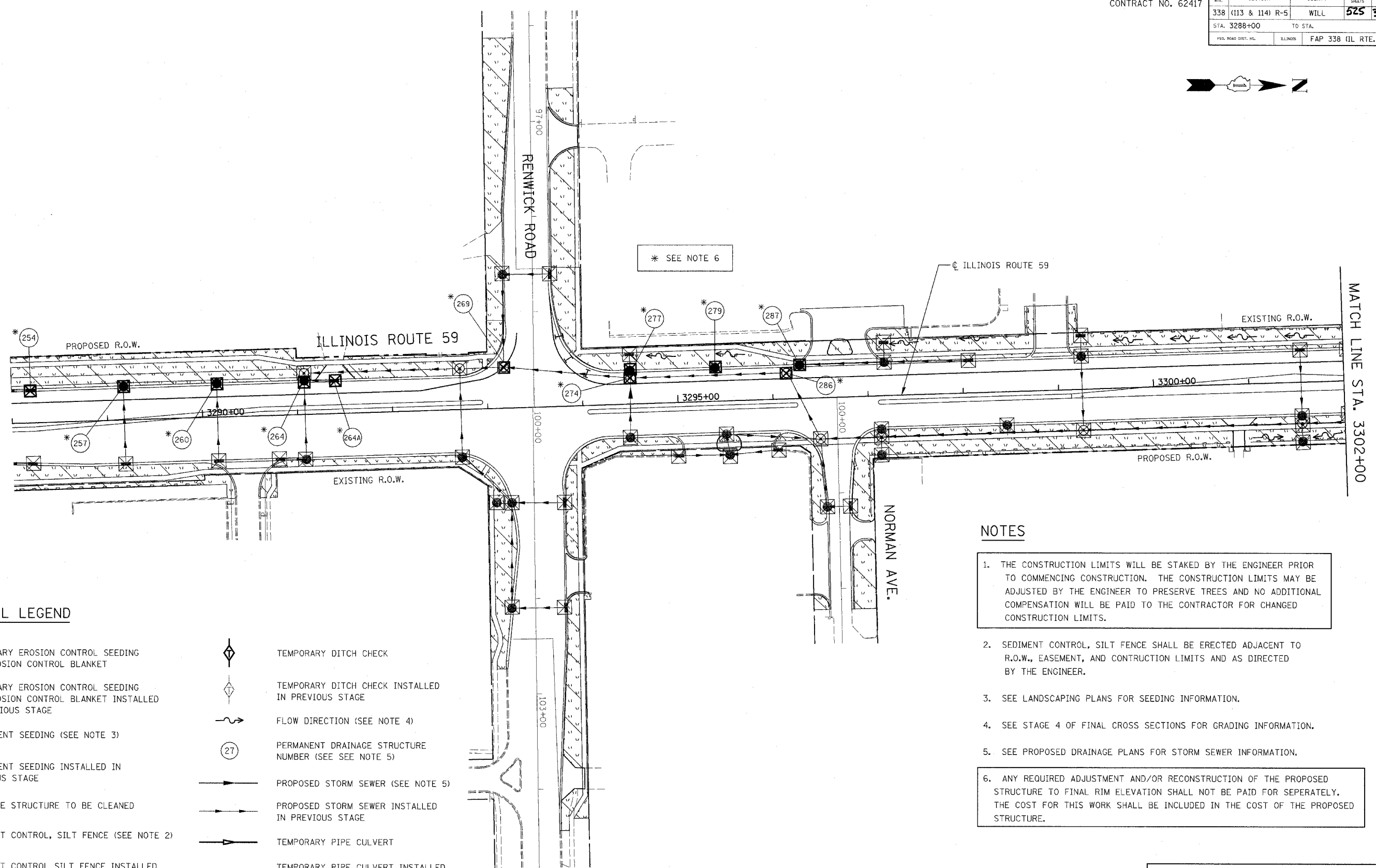
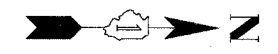


FAP NO.	SECTION	COUNTY	TOTAL SHEETS	SHEET NO.
338 (113 & 114) R-5	WILL	525	359	
STA. 3288+00		TO STA.		
FED. ROAD DIST. NO.	ILLINOIS	FAP 338 (IL RTE. 59)		

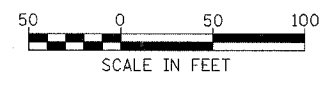


EROSION CONTROL LEGEND

- TEMPORARY EROSION CONTROL SEEDING AND EROSION CONTROL BLANKET
- TEMPORARY EROSION CONTROL SEEDING AND EROSION CONTROL BLANKET INSTALLED IN PREVIOUS STAGE
- PERMANENT SEEDING (SEE NOTE 3)
- PERMANENT SEEDING INSTALLED IN PREVIOUS STAGE
- DRAINAGE STRUCTURE TO BE CLEANED
- SEDIMENT CONTROL, SILT FENCE (SEE NOTE 2)
- SEDIMENT CONTROL SILT FENCE INSTALLED IN PREVIOUS STAGE
- INLET FILTER
- INLET FILTER INSTALLED IN PREVIOUS STAGE
- TEMPORARY DITCH CHECK
- TEMPORARY DITCH CHECK INSTALLED IN PREVIOUS STAGE
- FLOW DIRECTION (SEE NOTE 4)
- PERMANENT DRAINAGE STRUCTURE NUMBER (SEE NOTE 5)
- PROPOSED STORM SEWER (SEE NOTE 5)
- PROPOSED STORM SEWER INSTALLED IN PREVIOUS STAGE
- TEMPORARY PIPE CULVERT
- TEMPORARY PIPE CULVERT INSTALLED IN PREVIOUS STAGE

NOTES

1. THE CONSTRUCTION LIMITS WILL BE STAKED BY THE ENGINEER PRIOR TO COMMENCING CONSTRUCTION. THE CONSTRUCTION LIMITS MAY BE ADJUSTED BY THE ENGINEER TO PRESERVE TREES AND NO ADDITIONAL COMPENSATION WILL BE PAID TO THE CONTRACTOR FOR CHANGED CONSTRUCTION LIMITS.
2. SEDIMENT CONTROL, SILT FENCE SHALL BE ERECTED ADJACENT TO R.O.W., EASEMENT, AND CONSTRUCTION LIMITS AND AS DIRECTED BY THE ENGINEER.
3. SEE LANDSCAPING PLANS FOR SEEDING INFORMATION.
4. SEE STAGE 4 OF FINAL CROSS SECTIONS FOR GRADING INFORMATION.
5. SEE PROPOSED DRAINAGE PLANS FOR STORM SEWER INFORMATION.
6. ANY REQUIRED ADJUSTMENT AND/OR RECONSTRUCTION OF THE PROPOSED STRUCTURE TO FINAL RIM ELEVATION SHALL NOT BE PAID FOR SEPERATELY. THE COST FOR THIS WORK SHALL BE INCLUDED IN THE COST OF THE PROPOSED STRUCTURE.



ILLINOIS DEPARTMENT OF TRANSPORTATION
 DISTRICT NO. 1 SCHAUMBURG
 EROSION CONTROL PLAN
 STAGES 4 & 4A
 ILLINOIS ROUTE 59

SCALE AS SHOWN
 DATE MARCH 18, 2008

DRAWN BY BSB
 CHECKED BY HME

MATCH LINE STA. 3302+00