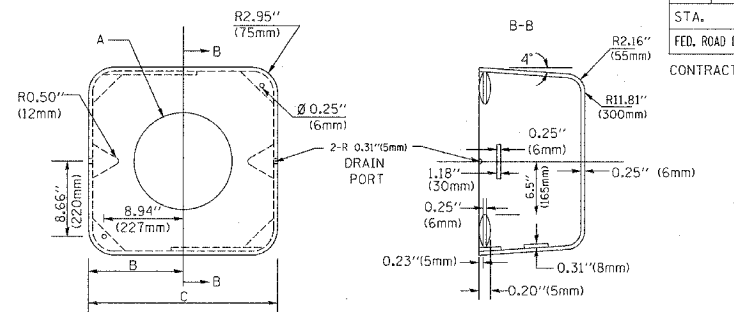
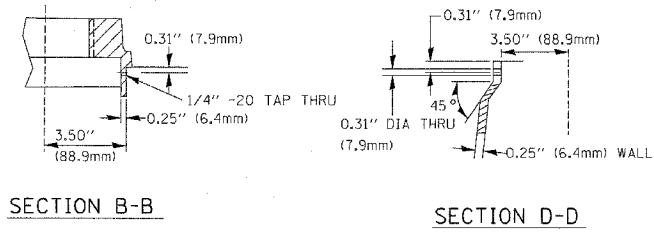
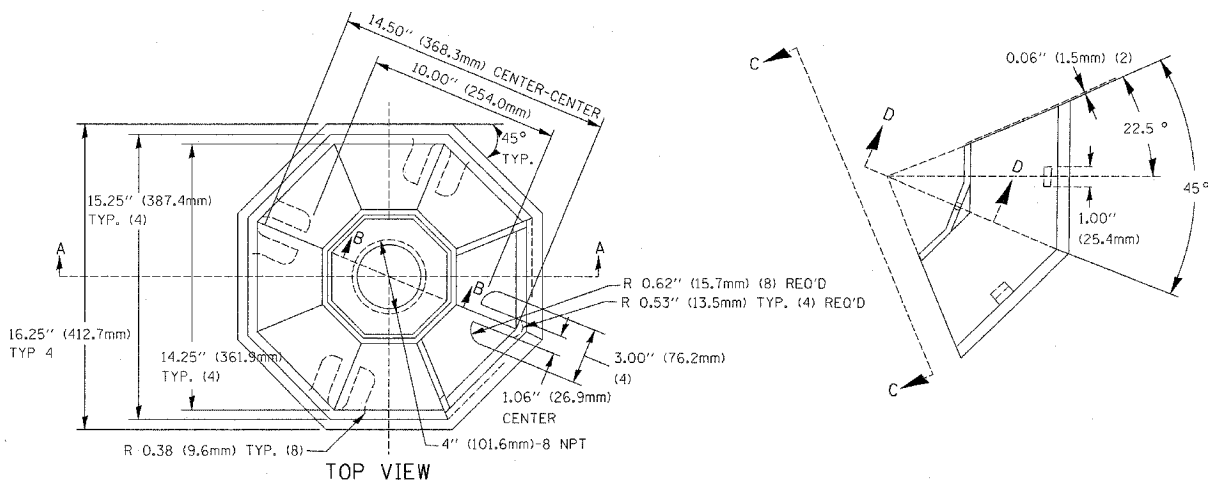
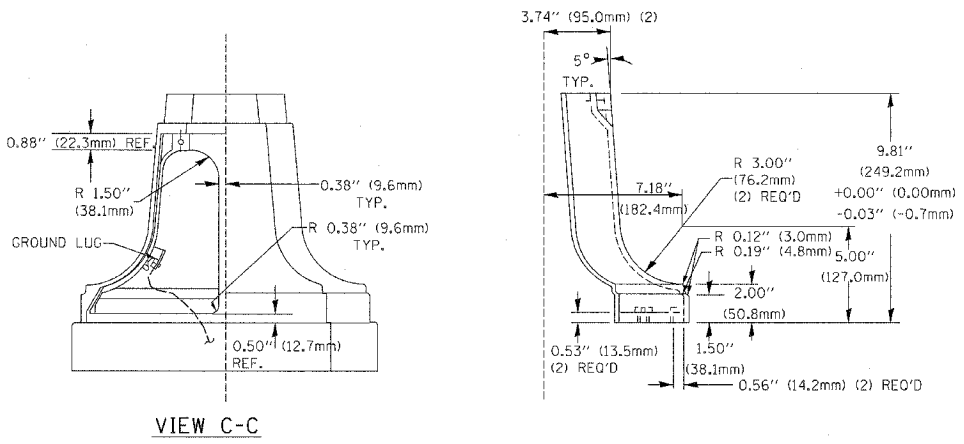
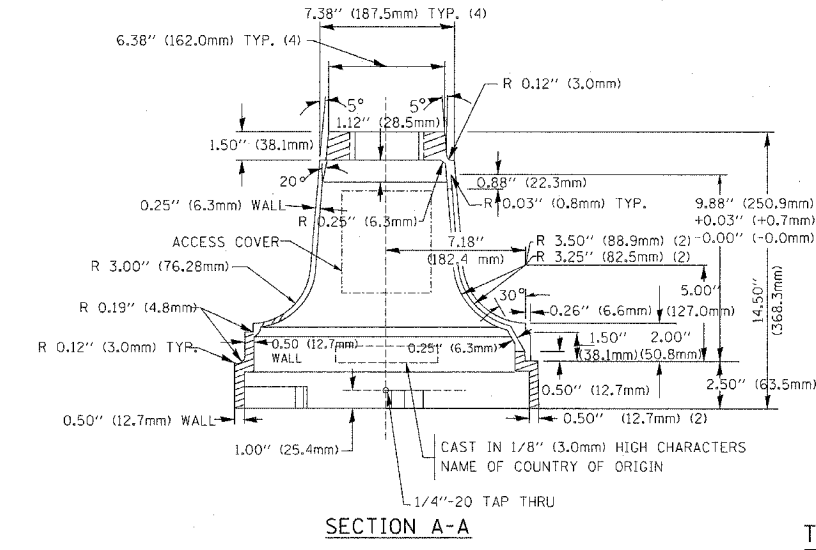


|                  |               |        |   |           |
|------------------|---------------|--------|---|-----------|
| F.A.U. R.T.E.    | SECTION       | COUNTY | TOTAL SHEETS                                    | SHEET NO. |
| 338              | 1113 & 114R-5 | WILL   | 525   | 371       |
| STA.             | TO STA.       |        | FED. ROAD DIST. NO. 1 ILLINOIS FED. AID PROJECT |           |
| CONTRACT # 62417 |               |        |   |           |

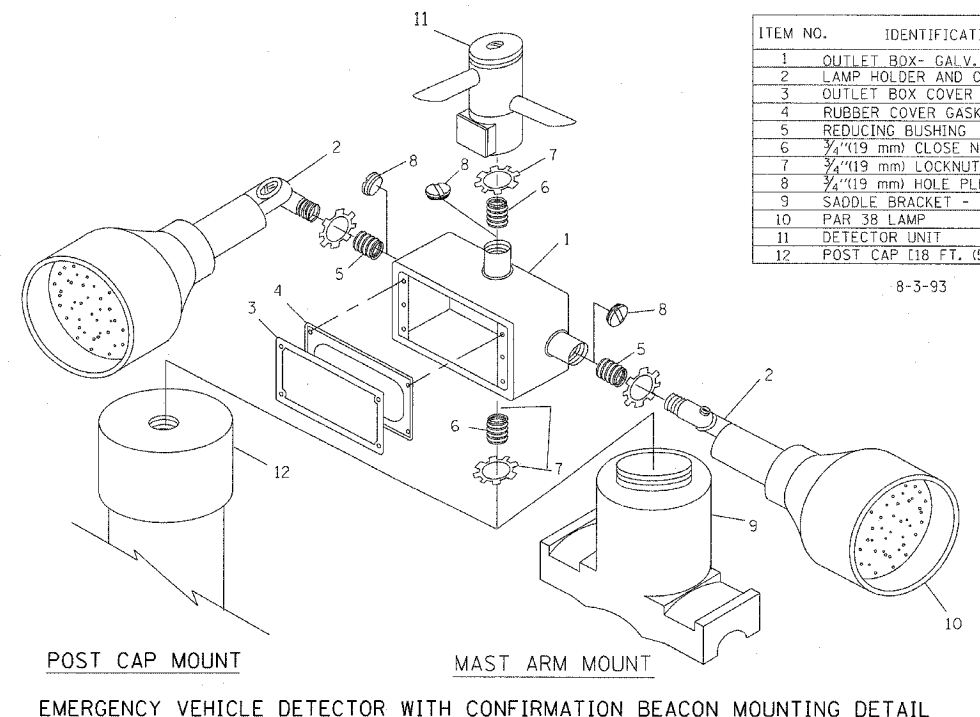
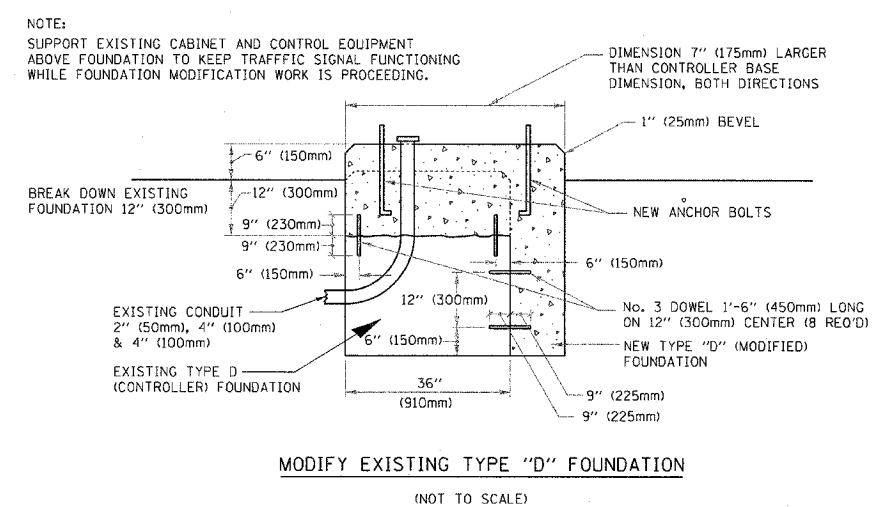


| TYPE | A                 | B              | C             | HEIGHT      | WEIGHT |
|------|-------------------|----------------|---------------|-------------|--------|
| I    | Ø 10.125\"(257mm) | 9.5\"(241mm)   | 19\"(483mm)   | 12\"(300mm) | 24kg   |
| II   | Ø 11.125\"(283mm) | 10.75\"(273mm) | 21.5\"(546mm) | 12\"(300mm) | 26kg   |

MATERIAL:  
 - ASTM A48 CLASS 30 GREY IRON  
 - ASTM A123 HOT DIPPED GALVANIZED

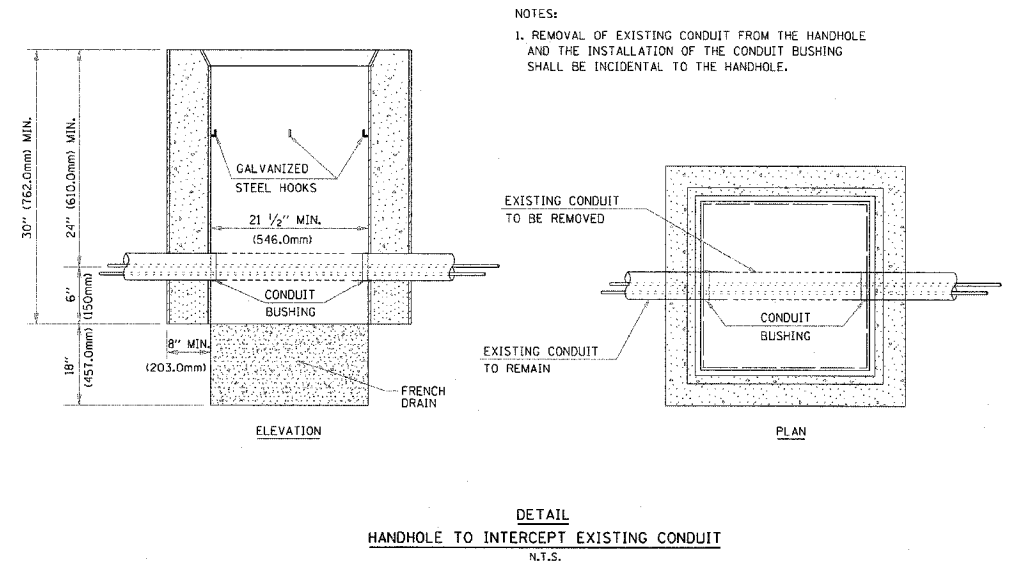
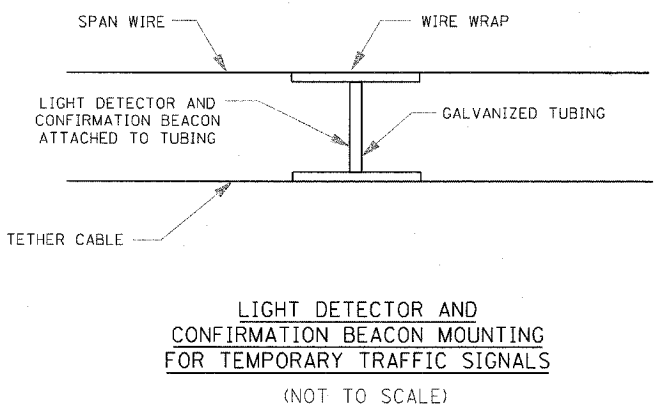


TRAFFIC SIGNAL POST - MOUNTING BASE - TYPE A



| ITEM NO. | IDENTIFICATION                              |
|----------|---|
| 1        | OUTLET BOX- GALV. 21 CU.IN. (0.000344 CU-M) |
| 2        | LAMP HOLDER AND COVER                       |
| 3        | OUTLET BOX COVER                            |
| 4        | RUBBER COVER GASKET                         |
| 5        | REDUCING BUSHING                            |
| 6        | 3/4\"(19 mm) CLOSE NIPPLE                   |
| 7        | 3/4\"(19 mm) LOCKNUT                        |
| 8        | 3/4\"(19 mm) HOLE PLUG                      |
| 9        | SADDLE BRACKET - GALV.                      |
| 10       | PAR 38 LAMP                                 |
| 11       | DETECTOR UNIT                               |
| 12       | POST CAP [18 FT. (5.4 m) POST MIN.]         |

- NOTES:
- ALL ELECTRICAL ITEMS, EXCEPT ITEMS #2 AND #11 SHALL BE ALUMINUM OR GALVANIZED
  - ITEM #1- OZ/GEDNEY FSX-1-50 OR EQUIVALENT  
 ITEM #2- MULBERRY CON-O-SHADE LAMP SHIELD OR EQUIVALENT  
 ITEM #9- "BAND-IT" SADDLE BRACKET OR EQUIVALENT
  - WHEN POST MOUNTING IS SPECIFIED, ITEM #9 SHALL NOT BE REQUIRED. THE DETECTION UNIT SHALL BE MOUNTED DIRECTLY ON TOP OF THE CAP BY DRILLING AND TAPPING A 3/4\"(19 mm) HOLE WITH PIPE THREADS. THE POST CAP SHALL EITHER BE SCREWED TO THE TOP OF THE POST OR A MINIMUM OF 3 TIGHTENING SCREWS SHALL BE REQUIRED ON EACH CAP.



| REVISIONS |      |
|-----------|------|
| NAME      | DATE |
|           |      |
|           |      |
|           |      |
|           |      |
|           |      |
|           |      |
|           |      |
|           |      |
|           |      |
|           |      |

ILLINOIS DEPARTMENT OF TRANSPORTATION  
 DISTRICT 1  
 STANDARD TRAFFIC SIGNAL  
 DESIGN DETAILS

SCALE: VERT. NONE  
 HORIZ. 1-01-02  
 DATE

DRAWN BY: RWP  
 DESIGNED BY: DAD  
 CHECKED BY: DAZ  
 SHEET 4 OF 4

J:\PROJECTS\Projects 2003\1159\_Catona\2008\_rev\ok\_for\_t\_beggs\05-std4.dgn  
 DATE-TIME: 05-01-02 10:00:00  
 DGN-SPEC: