

CONTRACT NO. 62551

SUMMARY OF QUANTITIES			URBAN 80% FED. 20% STATE TOTAL QUANTITIES		CONSTRUCTION TYPE CODE				
CODE NO	ITEM	UNIT		ROADWAY 1000-2A					
40600200	BITUMINOUS MATERIALS (PRIME COAT)	TON	31	31					
40600300	AGGREGATE (PRIME COAT)	TON	103	103					
40600400	MIXTURE FOR CRACKS, JOINTS, AND FLANGEWAYS	TON	28	28					
40600895	CONSTRUCTING TEST STRIP	EACH	2	2					
40600982	HOT-MIX ASPHALT SURFACE REMOVAL - BUTT JOINT	SO YD	235	235					
40600985	PORTLAND CEMENT CONCRETE SURFACE REMOVAL - BUTT JOINT	SO YD	415	415					
40601005	HOT-MIX ASPHALT REPLACEMENT OVER PATCHES	TON	425	425					
40603340	HOT-MIX ASPHALT SURFACE COURSE, MIX "D", N70	TON	4340	4340					
42001300	PROTECTIVE COAT	SO YD	275	275					
44000158	HOT-MIX ASPHALT SURFACE REMOVAL, 2 1/4"	SO YD	48850	48850					
44000500	COMBINATION CURB AND GUTTER REMOVAL	FOOT	1090	1090					
44002212	HOT-MIX ASPHALT REMOVAL OVER PATCHES, 3"	SO YD	2510	2510					
44003510	MEDIAN REMOVAL PARTIAL DEPTH	SO FT	550	550					
44201749	CLASS D PATCHES, TYPE I, 9 INCH	SO YD	31	31					
44201753	CLASS D PATCHES, TYPE II, 9 INCH	SO YD	1035	1035					
44201757	CLASS D PATCHES, TYPE III, 9 INCH	SO YD	365	365					
44201759	CLASS D PATCHES, TYPE IV, 9 INCH	SO YD	673	673					
55039700	STORM SEWERS TO BE CLEANED	FOOT	100	100					
60250200	CATCH BASINS TO BE ADJUSTED	EACH	21	21					
60251740	CATCH BASINS TO BE ADJUSTED WITH NEW TYPE 24 FRAME AND GRATE	EACH	1	1					
60258200	MANHOLES TO BE RECONSTRUCTED WITH NEW TYPE 1 FRAME, CLOSED LID	EACH	1	1					
60300310	FRAMES AND LIDS TO BE ADJUSTED (SPECIAL)	EACH	20	20					
60406000	FRAMES AND LIDS, TYPE 1, OPEN LID	EACH	2	2					
60406100	FRAMES AND LIDS, TYPE 1, CLOSED LID	EACH	2	2					
60603800	COMBINATION CONCRETE CURB AND GUTTER, TYPE B-6. 12	FOOT	790	790					

SUMMARY OF QUANTITIES			URBAN 80% FED. 20% STATE TOTAL QUANTITIES		CONSTRUCTION TYPE CODE				
CODE NO	ITEM	UNIT		ROADWAY 1000-2A					
60605000	COMBINATION CONCRETE CURB AND GUTTER, TYPE B-6. 24	FOOT	300	300					
67000400	ENGINEER'S FIELD OFFICE, TYPE A	CAL MO	6	6					
67100100	MOBILIZATION	L SUM	1	1					
70100320	TRAFFIC CONTROL AND PROTECTION, STANDARD 701422	L SUM	1	1					
70100460	TRAFFIC CONTROL AND PROTECTION, STANDARD 701306	L SUM	1	1					
70102622	TRAFFIC CONTROL AND PROTECTION, STANDARD 701502	L SUM	1	1					
70102630	TRAFFIC CONTROL AND PROTECTION, STANDARD 701601	L SUM	1	1					
70102635	TRAFFIC CONTROL AND PROTECTION, STANDARD 701701	L SUM	1	1					
70300100	SHORT-TERM PAVEMENT MARKING	FOOT	9120	9120					
70300210	TEMPORARY PAVEMENT MARKING - LETTERS AND SYMBOLS	SO FT	1390	1390					
70300220	TEMPORARY PAVEMENT MARKING - LINE 4"	FOOT	27910	27910					
70300240	TEMPORARY PAVEMENT MARKING - LINE 6"	FOOT	4510	4510					
70300250	TEMPORARY PAVEMENT MARKING - LINE 8"	FOOT	350	350					
70300260	TEMPORARY PAVEMENT MARKING - LINE 12"	FOOT	1760	1760					
70300280	TEMPORARY PAVEMENT MARKING - LINE 24"	FOOT	515	515					
70301000	WORK ZONE PAVEMENT MARKING REMOVAL	SO FT	17655	17655					
* 78000100	THERMOPLASTIC PAVEMENT MARKING - LETTERS AND SYMBOLS	SO FT	1390	1390					
* 78000200	THERMOPLASTIC PAVEMENT MARKING - LINE 4"	FOOT	27910	27910					
* 78000400	THERMOPLASTIC PAVEMENT MARKING - LINE 6"	FOOT	4600	4600					
* 78000500	THERMOPLASTIC PAVEMENT MARKING - LINE 8"	FOOT	1100	1100					
* 78000600	THERMOPLASTIC PAVEMENT MARKING - LINE 12"	FOOT	1760	1760					
* 78000650	THERMOPLASTIC PAVEMENT MARKING - LINE 24"	FOOT	710	710					

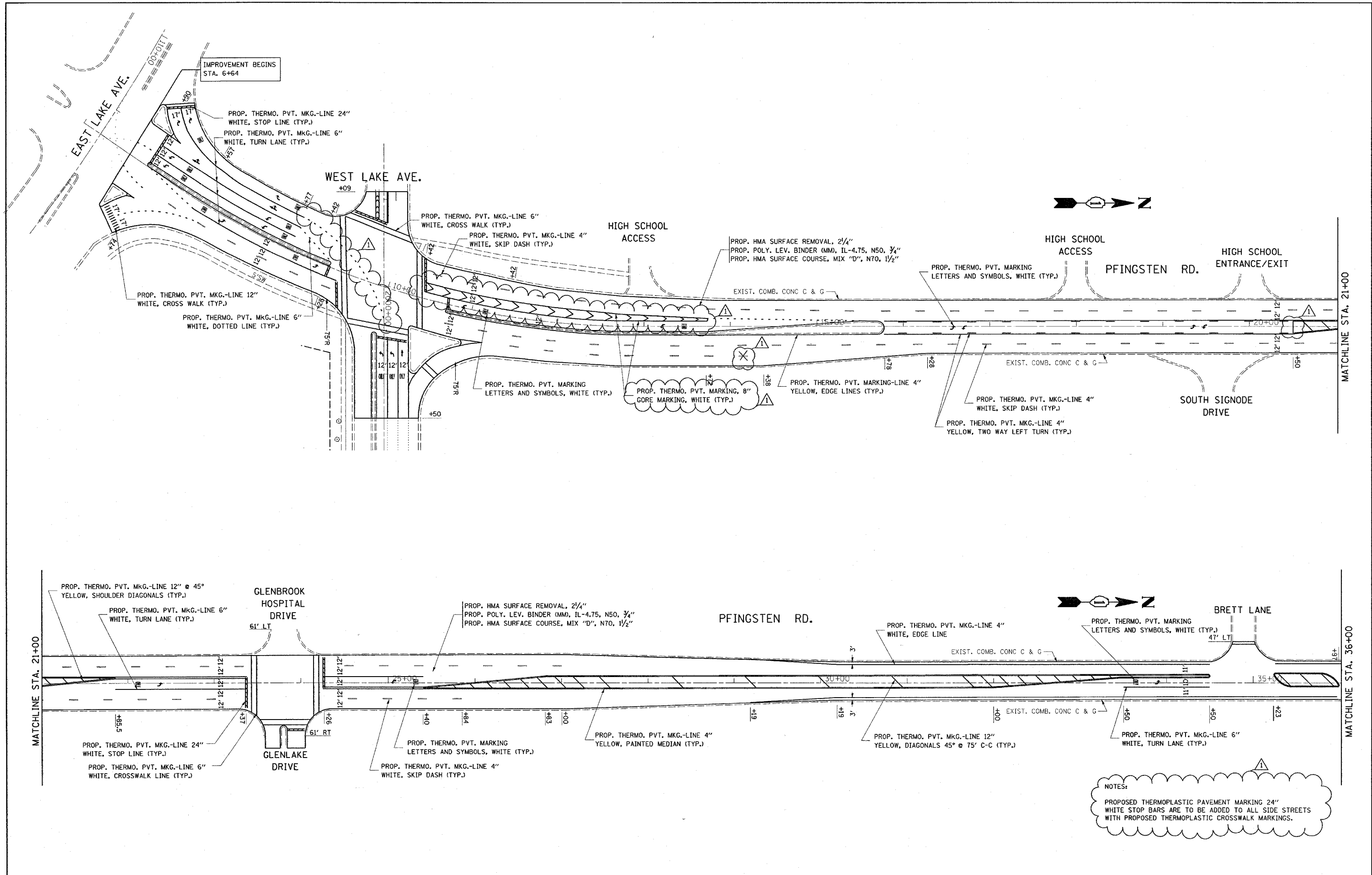
NP=Non-Participating
* SPECIALTY ITEMS

REVISIONS	
NAME	DATE

ILLINOIS DEPARTMENT OF TRANSPORTATION
SUMMARY OF QUANTITIES

Rev. 5-27-08

4/2/2008 10:00 AM C:\PROJECTS\111012\111012.DWG



NOTES:
 PROPOSED THERMOPLASTIC PAVEMENT MARKING 24" WHITE STOP BARS ARE TO BE ADDED TO ALL SIDE STREETS WITH PROPOSED THERMOPLASTIC CROSSWALK MARKINGS.

FILE NAME =
 c:\projects\dl37882\design_oo.dgn

USER NAME = smthkl
 PLOT SCALE = 50,000 / IN.
 PLOT DATE = 5/19/2008

DESIGNED -
 DRAWN -
 CHECKED -
 DATE -

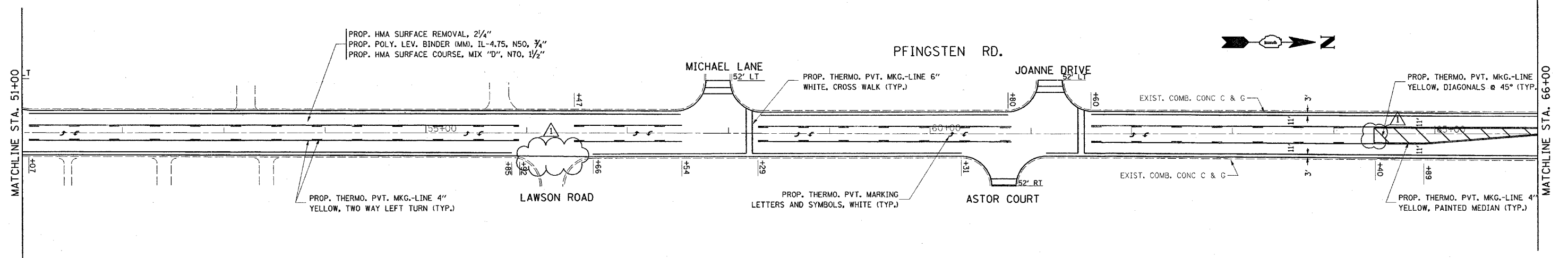
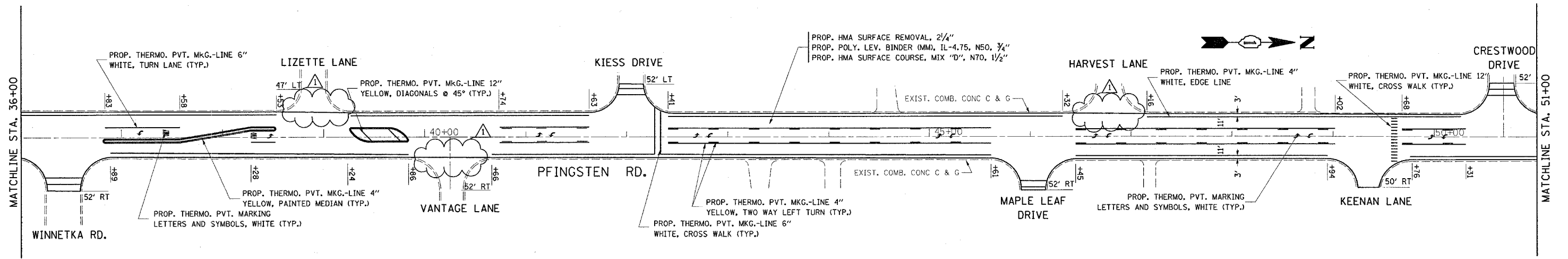
REVISED - Δ 5/19/08 K.S.
 REVISED -
 REVISED -
 REVISED -

STATE OF ILLINOIS
 DEPARTMENT OF TRANSPORTATION

PFINGSTEN RD. (WEST LAKE AVE. TO HIGHLAND DR.)
 ROADWAY AND PAVEMENT MARKING PLAN

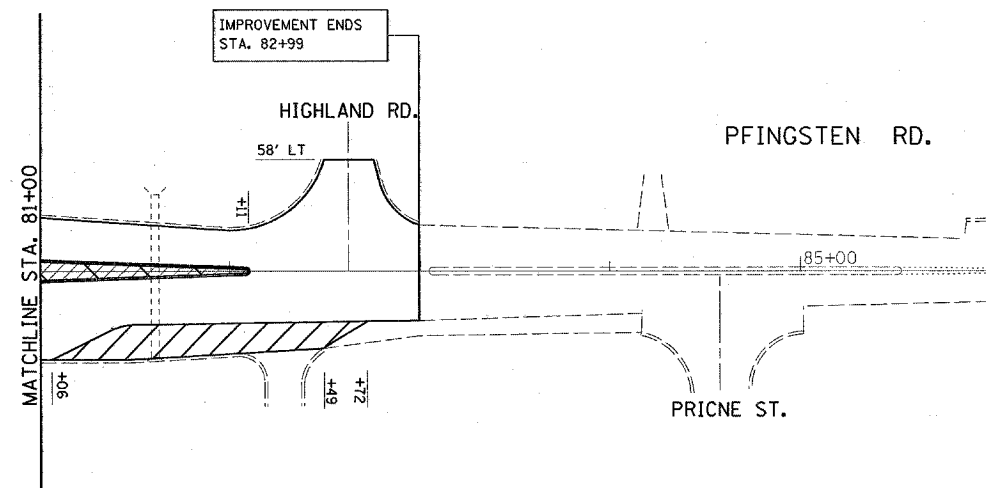
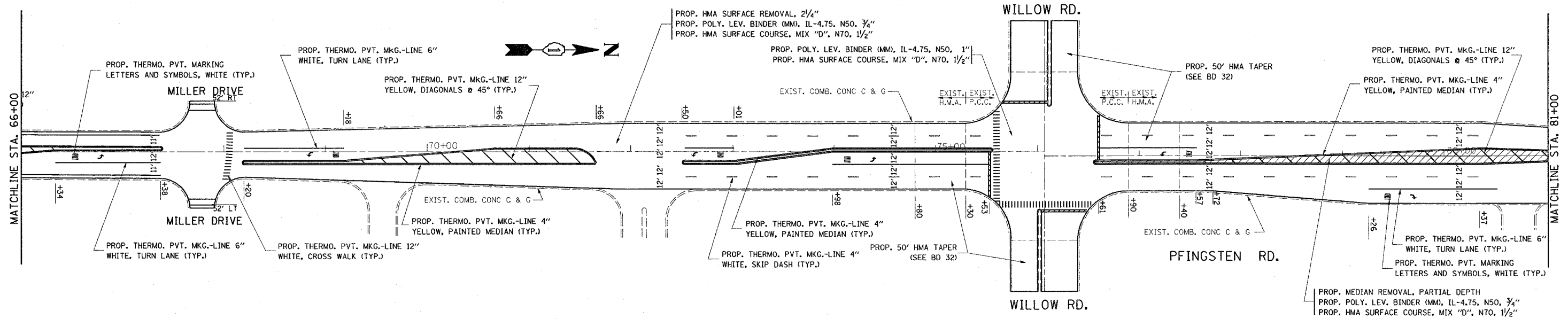
SCALE: SHEET NO. OF SHEETS STA. TO STA.

F.A.U. RTE.	SECTION	COUNTY	TOTAL SHEETS	SHEET NO.
2734	1821 RS-2	COOK	27	8
FED. ROAD DIST. NO. 1 ILLINOIS FED. AID PROJECT				
CONTRACT NO. 62551				



NOTES:
 PROPOSED THERMOPLASTIC PAVEMENT MARKING 24"
 WHITE STOP BARS ARE TO BE ADDED TO ALL SIDE STREETS
 WITH PROPOSED THERMOPLASTIC CROSSWALK MARKINGS.

FILE NAME = c:\projects\dl37802\design_aa.dgn	USER NAME = smthkl	DESIGNED -	REVISED - Δ 5/19/08 K.S.	STATE OF ILLINOIS DEPARTMENT OF TRANSPORTATION	PFINGSTEN RD. (WEST LAKE AVE. TO HIGHLAND DR.) ROADWAY AND PAVEMENT MARKING PLAN		F.A.U. RTE.	SECTION	COUNTY	TOTAL SHEETS	SHEET NO.		
	PLOT SCALE = 50.0000' / IN.	DRAWN -	REVISED -				2734	1821 RS-2	COOK	27	9		
	PLOT DATE = 5/19/2008	CHECKED -	REVISED -				CONTRACT NO. 62551						
		DATE -	REVISED -				FED. ROAD DIST. NO. 1 ILLINOIS FED. AID PROJECT						



NOTES:

PROPOSED THERMOPLASTIC PAVEMENT MARKING 24" WHITE STOP BARS ARE TO BE ADDED TO ALL SIDE STREETS WITH PROPOSED THERMOPLASTIC CROSSWALK MARKINGS.

FILE NAME = c:\projects\dl37802\design\ae.dgn

USER NAME = smthk1
 PLOT SCALE = 50.0000' / IN.
 PLOT DATE = 5/19/2008

DESIGNED -
 DRAWN -
 CHECKED -
 DATE -

REVISED - Δ 5/19/08 K.S.
 REVISED -
 REVISED -
 REVISED -

STATE OF ILLINOIS
 DEPARTMENT OF TRANSPORTATION

PFLINGSTEN RD. (WEST LAKE AVE. TO HIGHLAND DR.)
 ROADWAY AND PAVEMENT MARKING PLAN

SCALE: SHEET NO. OF SHEETS STA. TO STA.

F.A.U. RTE.	SECTION	COUNTY	TOTAL SHEETS	SHEET NO.
2734	1821 RS-2	COOK	27	10
CONTRACT NO. 62551				
FED. ROAD DIST. NO. 1 ILLINOIS FED. AID PROJECT				