

STATE OF ILLINOIS  
DEPARTMENT OF TRANSPORTATION  
DIVISION OF HIGHWAYS

**PROPOSED  
HIGHWAY PLANS**

F.A.U. ROUTE 2734 (PFINGSTEN RD.)  
WEST LAKE AVE. TO HIGHLAND DR.  
SECTION: 1821 RS-2  
RESURFACING (MAINTENANCE)  
PROJECT: ACM-2734(001)  
COOK COUNTY  
C-91-378-02

F.A.U. RTE.	SECTION	COUNTY	TOTAL SHEETS	SHEET NO.
2734	1821 RS-2	COOK	27	1
FED. ROAD DIST. NO.		ILLINOIS	CONTRACT NO. 62551	

2714-31

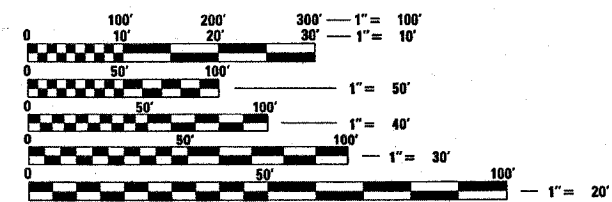
FOR INDEX OF SHEETS, SEE SHEET NO. 2

THE IMPROVEMENT IS LOCATED IN THE VILLAGE OF GLENVIEW IN COOK COUNTY

D-91-378-02

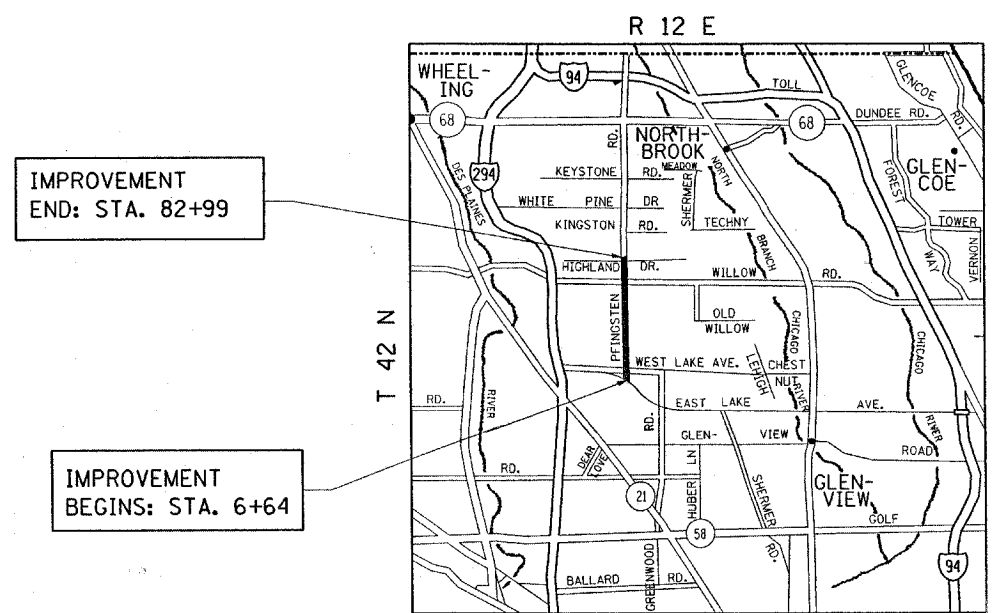


**TRAFFIC DATA**  
2006 ADT = 14,800  
POSTED SPEED LIMIT = 40 MPH



FULL SIZE PLANS HAVE BEEN PREPARED USING STANDARD ENGINEERING SCALES. REDUCED SIZED PLANS WILL NOT CONFORM TO STANDARD SCALES. IN MAKING MEASUREMENTS ON REDUCED PLANS, THE ABOVE SCALES MAY BE USED.

J.U.L.I.E.  
JOINT UTILITY LOCATION INFORMATION FOR EXCAVATION  
1-800-892-0123  
OR 811



GROSS AND NET LENGTH OF IMPROVEMENT = 7635 FEET = 1.45 MILES

PROJECT ENGINEER: JENPAI CHANG (847) 705-4332  
PROJECT MANAGER: KEN ENG (847) 705-4247

CONTRACT NO. 62551

STATE OF ILLINOIS  
DEPARTMENT OF TRANSPORTATION  
DIVISION OF HIGHWAYS

SUBMITTED April 2, 2008

*Diane M. O'Hara*  
DEPUTY DIRECTOR OF HIGHWAYS, REGION ENGINEER

May 9, 2008  
*Eric E. Haran*  
INTERIM ENGINEER OF DESIGN AND ENVIRONMENT

May 9, 2008  
*Christine M. Reed*  
DIRECTOR OF HIGHWAYS, CHIEF ENGINEER

**PRINTED BY THE AUTHORITY  
OF THE STATE OF ILLINOIS**