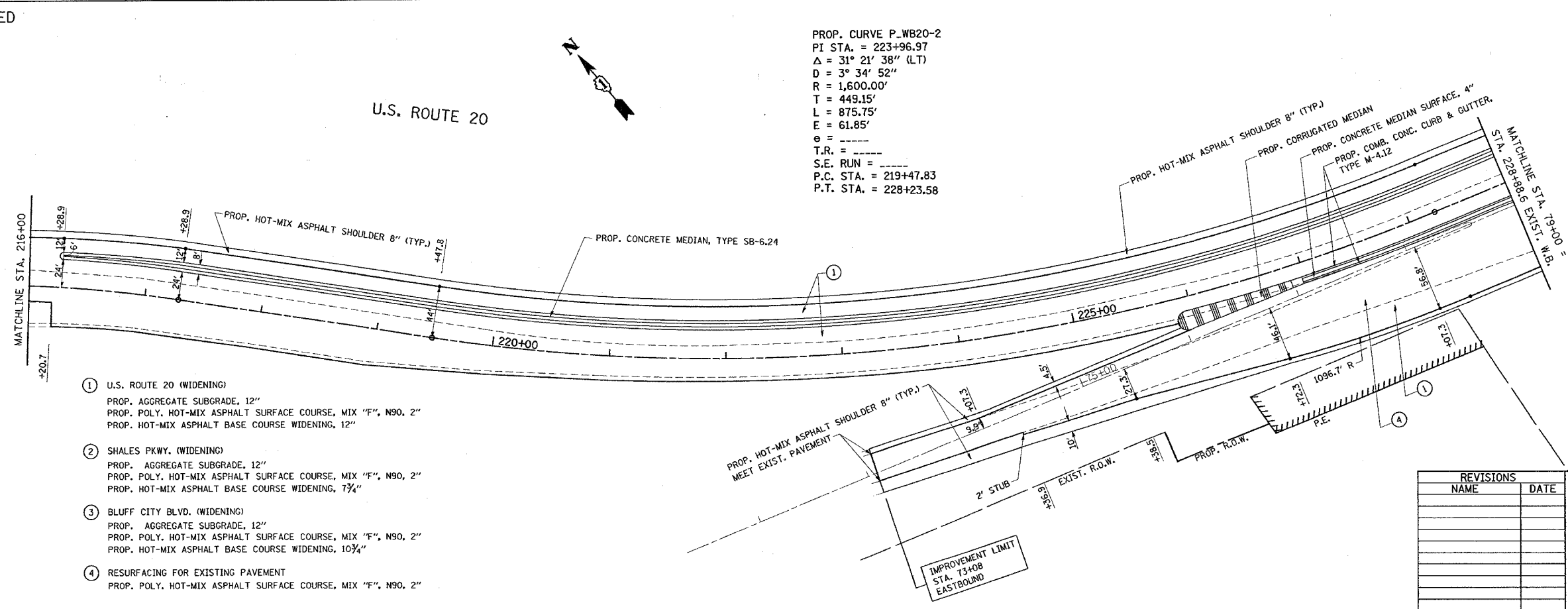


EXISTING



PROPOSED

- ① U.S. ROUTE 20 (WIDENING)
 PROP. AGGREGATE SUBGRADE, 12"
 PROP. POLY. HOT-MIX ASPHALT SURFACE COURSE, MIX "F", N90, 2"
 PROP. HOT-MIX ASPHALT BASE COURSE WIDENING, 12"
- ② SHALES PKWY. (WIDENING)
 PROP. AGGREGATE SUBGRADE, 12"
 PROP. POLY. HOT-MIX ASPHALT SURFACE COURSE, MIX "F", N90, 2"
 PROP. HOT-MIX ASPHALT BASE COURSE WIDENING, 7 3/4"
- ③ BLUFF CITY BLVD. (WIDENING)
 PROP. AGGREGATE SUBGRADE, 12"
 PROP. POLY. HOT-MIX ASPHALT SURFACE COURSE, MIX "F", N90, 2"
 PROP. HOT-MIX ASPHALT BASE COURSE WIDENING, 10 3/4"
- ④ RESURFACING FOR EXISTING PAVEMENT
 PROP. POLY. HOT-MIX ASPHALT SURFACE COURSE, MIX "F", N90, 2"

REVISIONS	
NAME	DATE

ILLINOIS DEPARTMENT OF TRANSPORTATION
 EXISTING AND PROPOSED
 ROADWAY PLAN
 U.S. 20 AT
 BLUFF CITY/ SHALES PKWY.

SCALE: VERT. 1" = 50'
 HORIZ. 1" = 100'

DATE 11/15/2007

DRAWN BY
 CHECKED BY