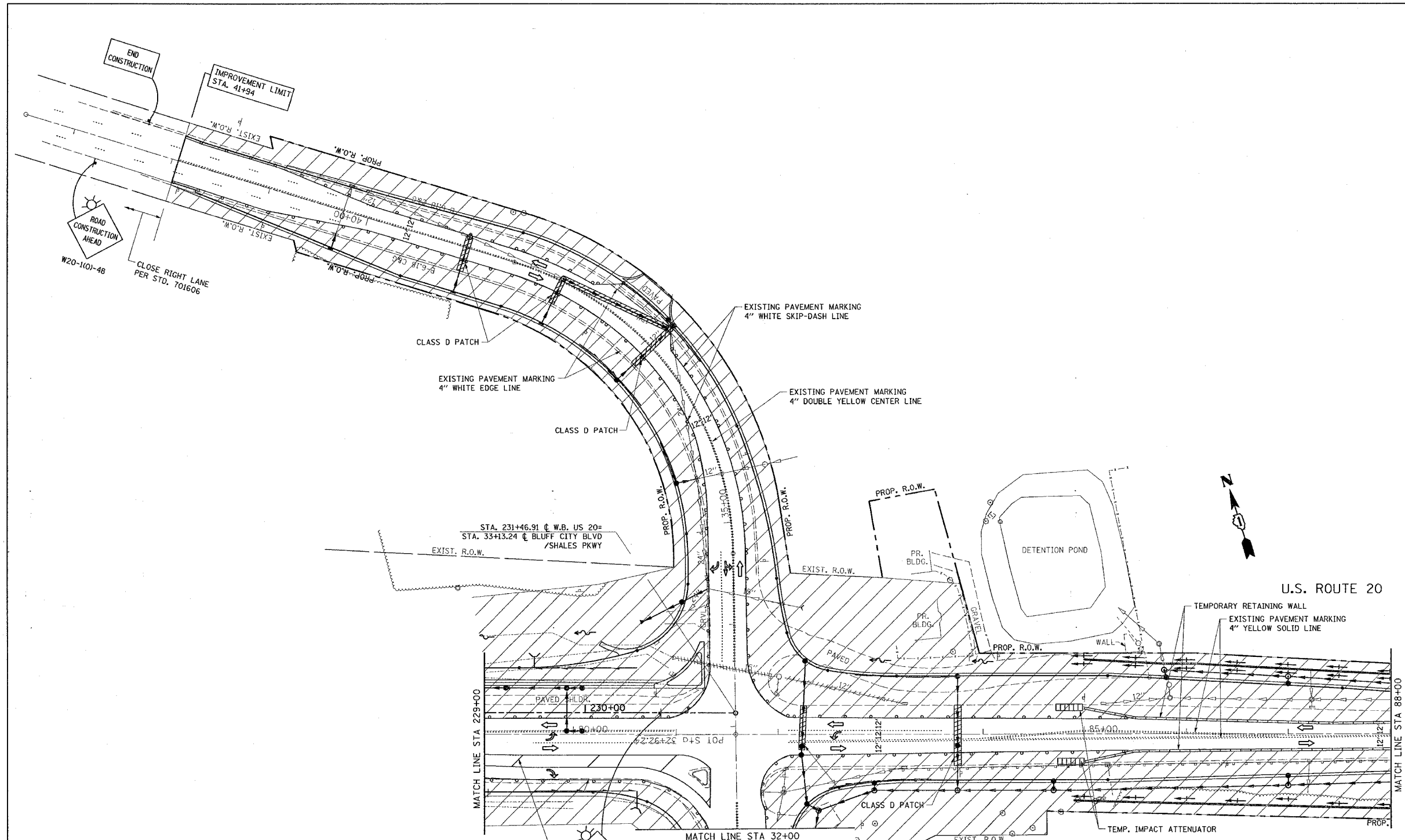

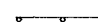
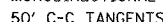
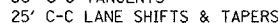
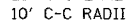
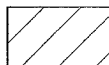

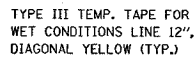


F.A. RTE.	SECTION	COUNTY	TOTAL SHEETS	SHEET NO.
345	82-1-N-1	COOK	196	28
STA.		TO STA.		
FED. ROAD DIST. NO.		ILLINOIS FED. AID PROJECT		



LEGEND

-  SIGN
-  DRUMS WITH STEADY BURN MONODIRECTIONAL LIGHT
-  50' C-C TANGENTS
-  25' C-C LANE SHIFTS & TAPERS
-  10' C-C RADII (TYP)
-  WORK AREA
-  SHOULDER CLOSED AHEAD
-  TYPE III TEMP. TAPE FOR WET CONDITIONS LINE 12", DIAGONAL YELLOW (TYP.)

REVISIONS	
NAME	DATE

ILLINOIS DEPARTMENT OF TRANSPORTATION

STAGE I CONSTRUCTION
U.S. RTE. 20 @
SHALES PARKWAY AND BLUFF CITY BLVD.

SCALE: VERT. 1"=50'
 HORIZ. 1"=100'
 DATE 2/14/2008

DRAWN BY
 CHECKED BY MEA/MJ

PLOT DATE = 2/14/2008
 FILE NAME = c:\p\projects\4113783\sh_sstage.dgn
 PLOT SCALE = 56.8888 / IN.
 USER NAME = drvakogin