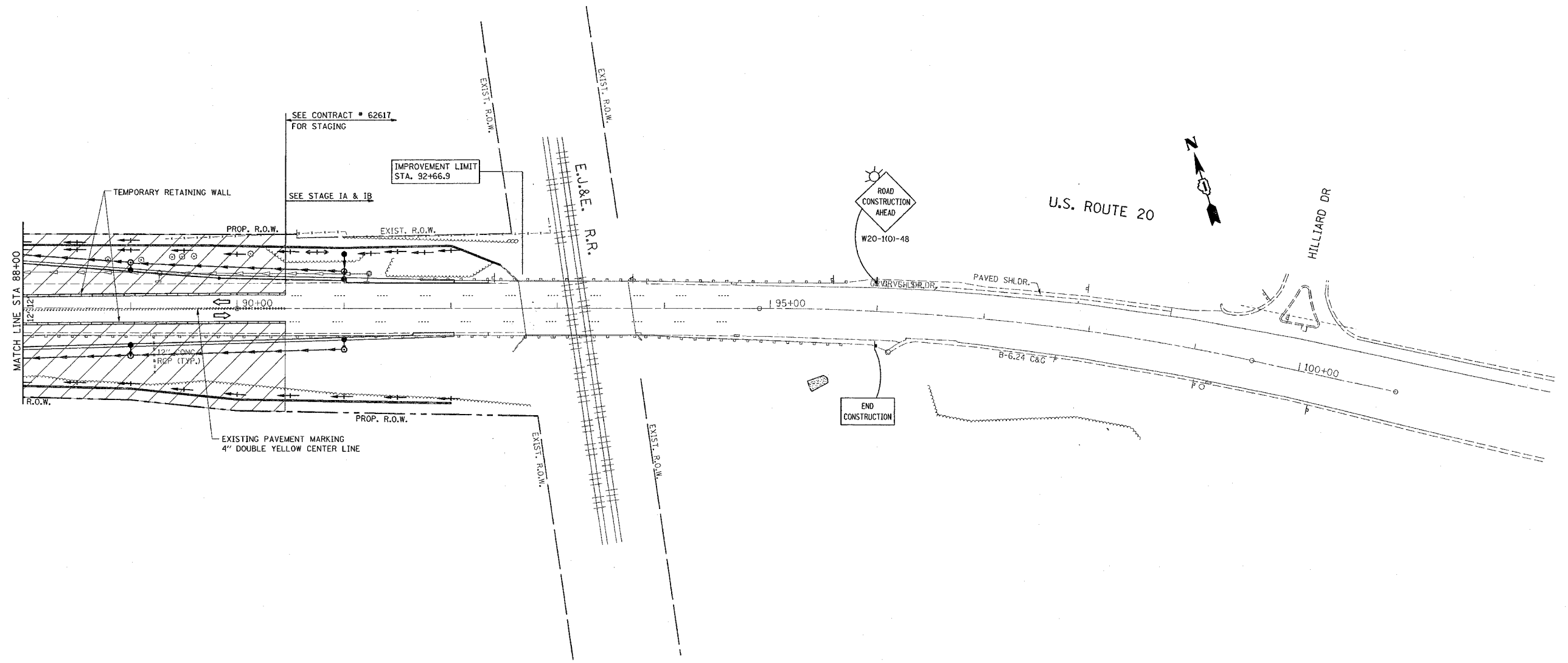

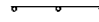
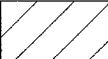


F.A. RTE.	SECTION	COUNTY	TOTAL SHEETS	SHEET NO.
346	02-1-N-1	COOK	196	29
STA.		TO STA.		
FED. ROAD DIST. NO.	ILLINOIS	FED. AID PROJECT		

NOTE:
COVER EXISTING CONFLICTING PAVEMENT MARKINGS WITH BLACK TYPE III TAPE. THE COST AND ITS REMOVAL IS INCLUDED IN THE COST OF "TRAFFIC CONTROL AND PROTECTION (SPECIAL)"



LEGEND

-  SIGN
-  DRUMS WITH STEADY BURN MONODIRECTIONAL LIGHT
- 50' C-C TANGENTS
- 25' C-C LANE SHIFTS & TAPERS
- 10' C-C RADII (TYP)
-  WORK AREA

PLOT DATE = 2/14/2008
 PLOT SCALE = 50.0000' / IN.
 USER NAME = drvakapgn

REVISIONS	
NAME	DATE

ILLINOIS DEPARTMENT OF TRANSPORTATION

STAGE I CONSTRUCTION
U.S. RTE. 20 @
SHALES PARKWAY AND BLUFF CITY BLVD.

SCALE: VERT. 1"=50'
 HORIZ. 1"=50'

DATE 2/14/2008

DRAWN BY
 CHECKED BY MEA/MJ