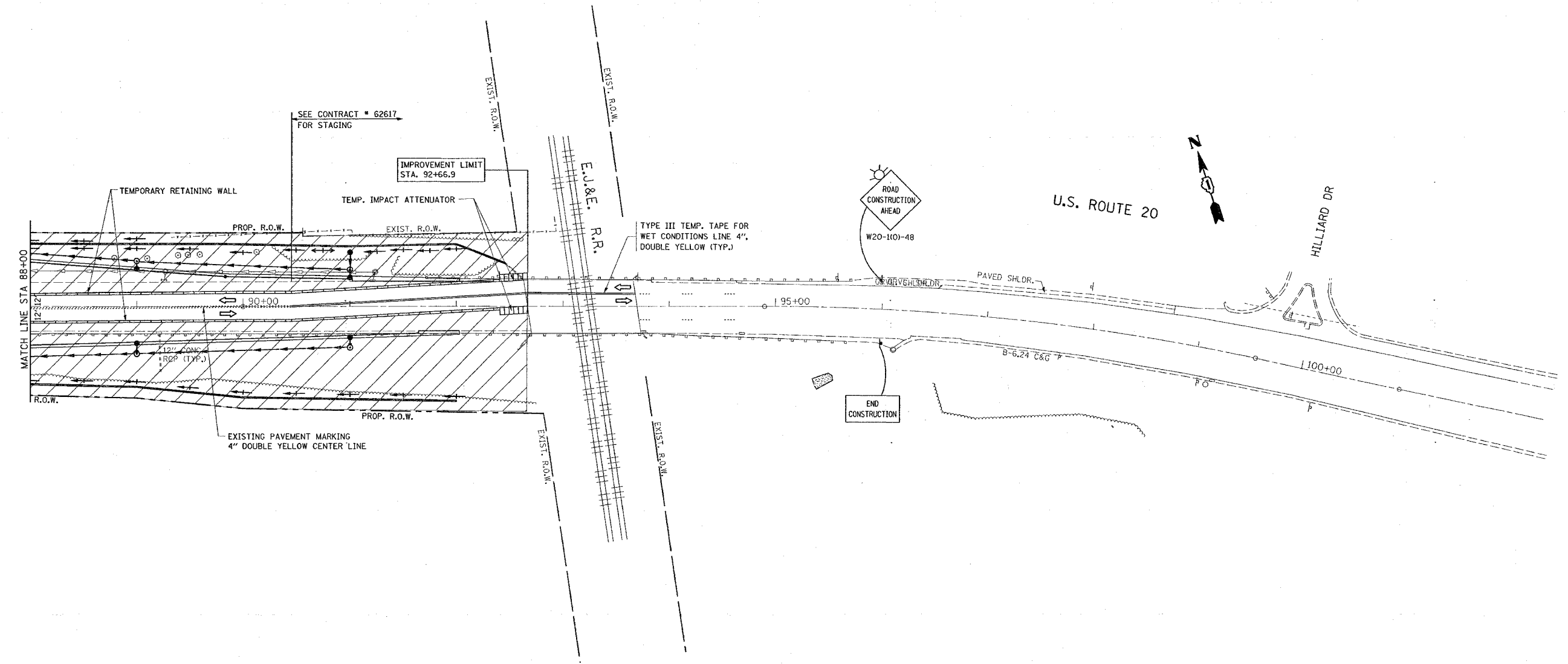

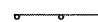
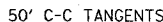
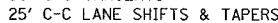
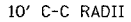
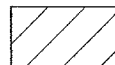


F.A. RTE.	SECTION	COUNTY	TOTAL SHEETS	SHEET NO.
245	82-1-N-1	Cook	196	32
STA.		TO STA.		
FED. ROAD DIST. NO.		ILLINOIS	FED. AID PROJECT	



**LEGEND**

-  SIGN
-  DRUMS WITH STEADY BURN MONODIRECTIONAL LIGHT
-  50' C-C TANGENTS
-  25' C-C LANE SHIFTS & TAPERS
-  10' C-C RADII (TYP)
-  WORK AREA

PLOT DATE = 2/14/2008  
 FILE NAME = c:\p\proj\sa\d13783\sh\_atspg.dgn  
 PLOT SCALE = 56.8000' / IN.  
 USER NAME = drivekcpn

REVISIONS	
NAME	DATE

ILLINOIS DEPARTMENT OF TRANSPORTATION

**STAGE IB CONSTRUCTION**  
**U.S. RTE. 20 @**  
**SHALES PARKWAY AND BLUFF CITY BLVD.**

SCALE: VERT. 1"=50'  
 HORIZ.  
 DATE 2/14/2008

DRAWN BY  
 CHECKED BY MEA/MJ