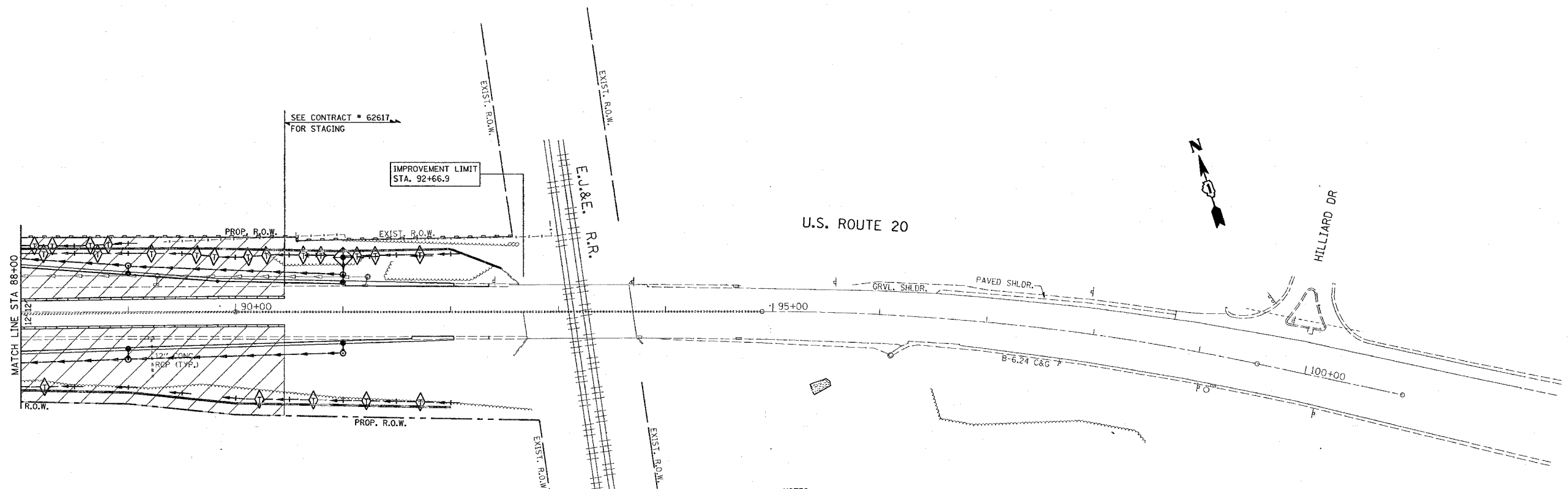


CONTRACT NO.				
F.A. RTE.	SECTION	COUNTY	TOTAL SHEETS	SHEET NO.
345	82-1-N-1	Cook	196	39
STA.		TO STA.		
FED. ROAD DIST. NO.		ILLINOIS FED. AID PROJECT		

NOTE:
COVER EXISTING CONFLICTING PAVEMENT MARKINGS WITH BLACK TYPE III TAPE. THE COST AND ITS REMOVAL IS INCLUDED IN THE COST OF "TRAFFIC CONTROL AND PROTECTION (SPECIAL)"



NOTES:

- TEMPORARY EROSION CONTROL SEEDING TO BE PROVIDED AT ALL ERODIBLE BARE EARTH AREAS, REFER TO SPECIAL PROVISION.
- NPDES PERMIT IS REQUIRED FOR THE PROJECT.
- THE CONTRACTORS SHALL PROVIDE & MAINTAIN INLET PROTECTION AT ALL PROPOSED DRAINAGE STRUCTURES AND AT OTHER LOCATIONS DIRECTED BY THE ENGINEER AND/OR SHOWN ON THE PLANS. INLET PROTECTION SHALL BE PLACED BEFORE THE AREA INVOLVED HAS BEEN DISTURBED.
- ALL EROSION CONTROL MEASURES SHALL BE IN ACCORDANCE WITH THE REQUIREMENTS OF THE STANDARD SPECIFICATION AND THE APPLICABLE STATE STANDARDS SPECIFICATION AND OF THE APPLICABLE STATE STANDARDS FOR THE ENTIRE DURATION OF THE CONTRACT OR UNTIL SUCH A TIME AS DIRECTED BY THE ENGINEER.
- AT ANY AREA WHERE THERE IS NO PROPOSED GRADING, THE EXISTING GROUND COVER SHALL REMAIN.
- EROSION CONTROL ITEMS ARE CONSIDERED TO BE HIGH PRIORITY ITEMS ON THIS CONTRACT. THE ENGINEER WILL IMPLEMENT ALL PROVISIONS OF THE SPECIFICATIONS NECESSARY TO ASSURE THAT EROSION CONTROL ITEMS ARE CONSTRUCTED AND MAINTAINED IN A TIMELY WAY. ALL EROSION CONTROL MEASURES SHALL BE INSTALLED PRIOR TO BEGINNING ANY CONSTRUCTION ACTIVITIES WHICH WILL POTENTIALLY CREATE ERODABLE CONDITIONS.
- THE EROSION CONTROL MEASURES SHOWN ARE BUT A GRAPHICAL REPRESENTATION OF SUGGESTED MEASURES. DEVIATIONS FROM THIS PLAN ARE TO BE EXPECTED PENDING A JOBSITE INSPECTION BETWEEN THE CONTRACTOR AND THE DEPARTMENT.
- THE CONTRACTOR WILL BE REQUIRED TO IMPLEMENT AND MAINTAIN SEDIMENT CONTROL MEASURES PRIOR TO STRIPPING EXISTING VEGETATION.

LEGEND

- PERIMETER EROSION BARRIER
- DITCH CHECK AT EVERY 1' DROP IN DITCH ELEVATION
- SWALE
- DITCH
- INLET PROTECTION
- WORK AREA

REVISIONS	
NAME	DATE

ILLINOIS DEPARTMENT OF TRANSPORTATION
STAGE I EROSION CONTROL PLAN
U.S. RTE. 20 @
SHALES PARKWAY AND BLUFF CITY BLVD.
SCALE: VERT. 1"=50'
HORIZ. DATE 2/14/2008
DRAWN BY
CHECKED BY