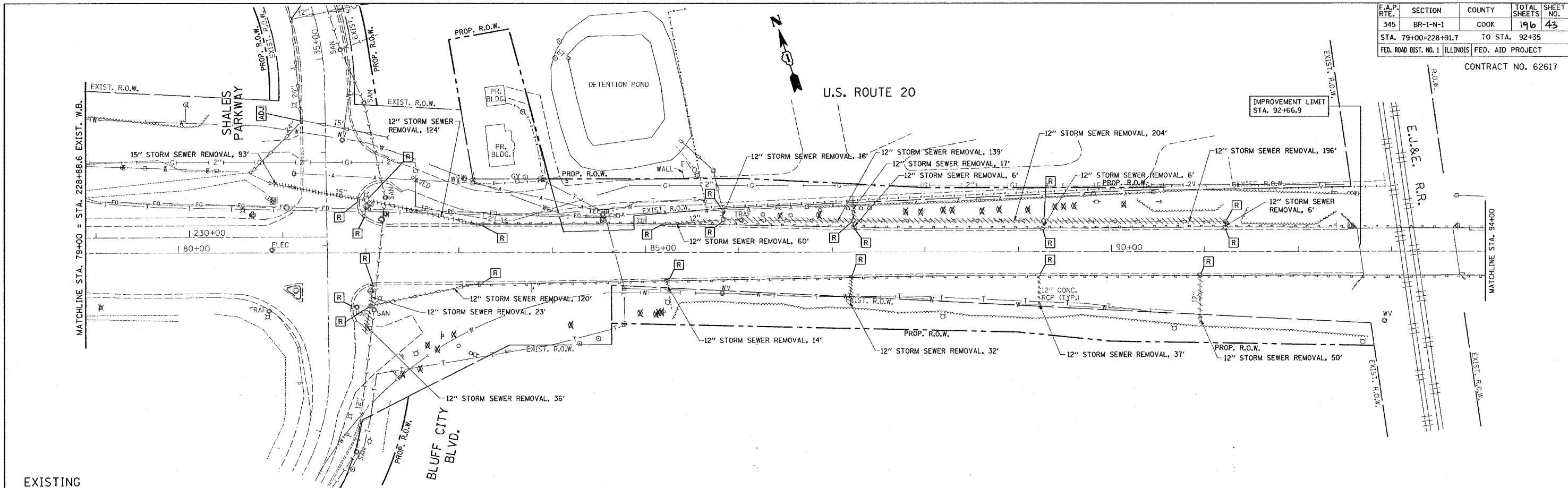


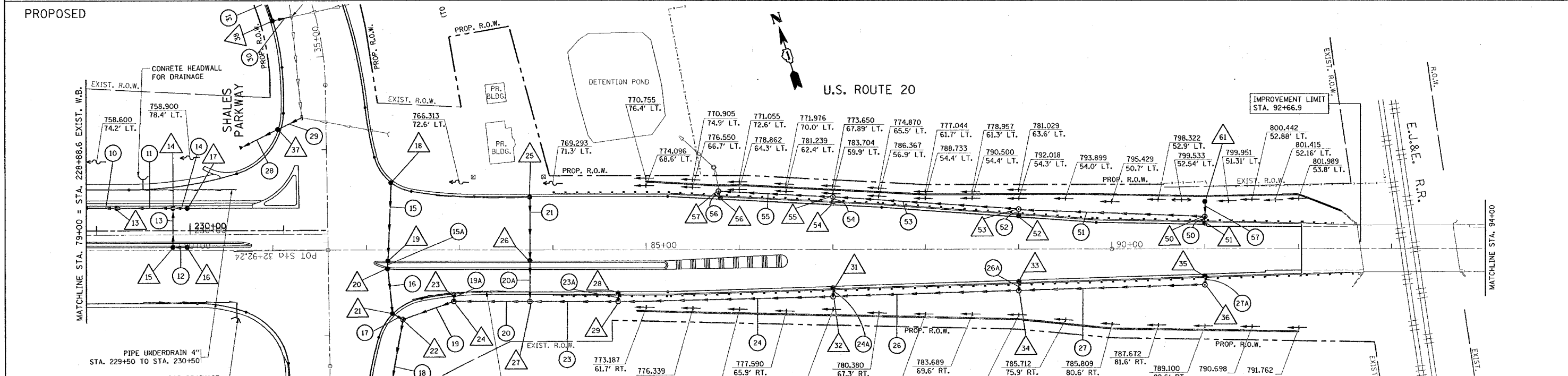
*REF-edr03
*REF-pdr03

F.A.P. RTE.	SECTION	COUNTY	TOTAL SHEETS	SHEET NO.
345	BR-1-N-1	COOK	196	43
STA. 79+00=228+91.7			TO STA. 92+35	
FED. ROAD DIST. NO. 1 ILLINOIS			FED. AID PROJECT	

CONTRACT NO. 62617



EXISTING



PROPOSED

REVISIONS	
NAME	DATE

ILLINOIS DEPARTMENT OF TRANSPORTATION
 EXISTING AND PROPOSED
 DRAINAGE & UTILITY PLAN
 U.S. 20 AT
 BLUFF CITY/ SHALES PKWY.

SCALE: VERT. 1"= 50'
 HORIZ. 1"= 50'
 DATE 2/14/2008

DRAWN BY
 CHECKED BY