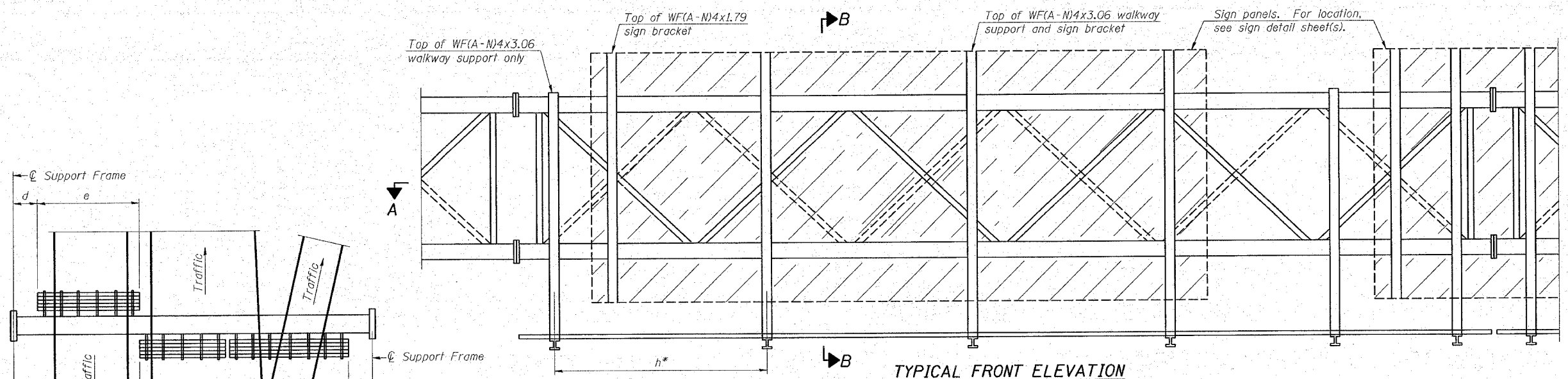
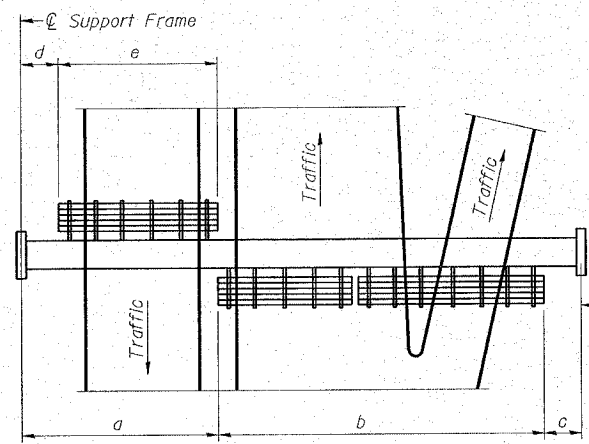


F.A.P. RTE.	SECTION	COUNTY	TOTAL SHEETS	SHEET NO.
345	8R-1-N-1	COOK	196	75
STA.	TO STA.			
FED. ROAD DIST. NO.	ILLINOIS	FED. AID PROJECT		
CONTRACT NO. 62617				



**TYPICAL FRONT ELEVATION**  
 With lights and handrail omitted for clarity.  
 For Section B-B, see Base Sheet OS-A-10.

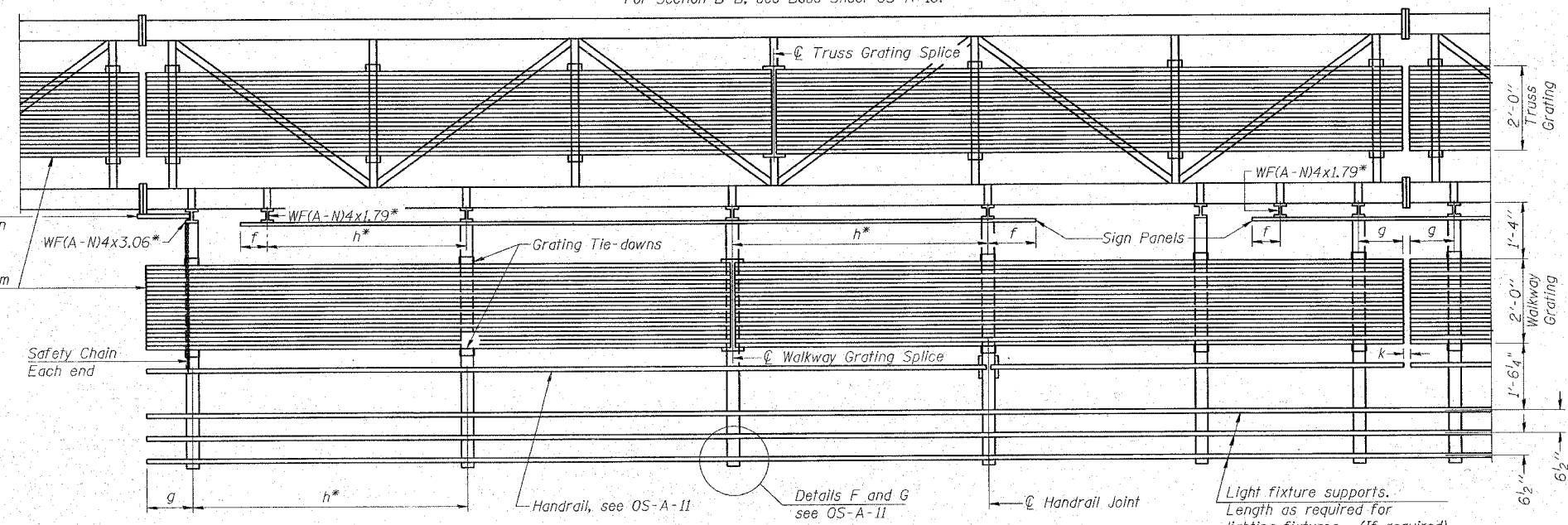


**PLAN WALKWAY AND HANDRAIL SKETCH**  
 (Road plan beneath truss varies)

**BRACKET TABLE**

Sign Width		Number Brackets Required
Greater Than	Less Than or Equal To	
	8'-0"	2
8'-0"	14'-0"	3
14'-0"	20'-0"	4
20'-0"	26'-0"	5
26'-0"	32'-0"	6

\*\* Alternate angle for safety chain attachment  
 Standard Aluminum Grating, see Details T and W



**SECTION A-A**

Handrail and walkway shall span a minimum of three brackets between splices and/or gap joints. Place all sign and walkway brackets as close to panel points as practical. Handrail joints, grating, and light support splices placed as needed.

Truss grating to facilitate inspection shall run full length (center to center of support frames) ±12" on overhead trusses. Cost of truss grating is included in "Overhead Sign Structure".

Walkway and Truss Grating width dimensions are nominal and may vary ±1/2" based on available standard widths.

- Notes:
- \* Space walkway brackets WF(A-N)4x3.06 and sign brackets WF(A-N)4x1.79 for efficiency and within limits shown:
    - f = 12" maximum, 4" minimum (End of sign to C of nearest bracket)
    - g = 12" maximum, 4" minimum (End of walkway grating to C of nearest support bracket)
    - h = 6'-0" maximum (C to C sign and/or walkway support brackets, WF(A-N)4x1.79 or WF(A-N)4x3.06)
    - k = 2" maximum gap between adjacent walkway grating sections and handrail ends
  - \*\* If walkway bracket at safety chain location is behind sign, add angle to bracket, see Alternate Safety Chain Attachment on Base Sheet OS-A-11.
- For Details T and W, Section B-B and Grating Splice Details see Base Sheet OS-A-10.  
 For Handrail Details see Base Sheet OS-A-11.

Structure Number	Station	a (FT.)	b (FT.)	c (FT.)	d (FT.)	e (FT.)	Walkway Grating and Handrail Lengths (FT.)
IS016U020L000.0	217+75	17	46	42			46

NUMBER	REVISION	DATE

**OVERHEAD SIGN STRUCTURES  
ALUMINUM WALKWAY DETAILS**

---

**US.20 AT SHALES PKWY.**

SCALE: VERT. N.T.S.  
 HORIZ. N.T.S.  
 DATE: 2/20/2008

DRAWN BY :SN  
 DESIGNED BY :SN  
 CHECKED BY :DAD