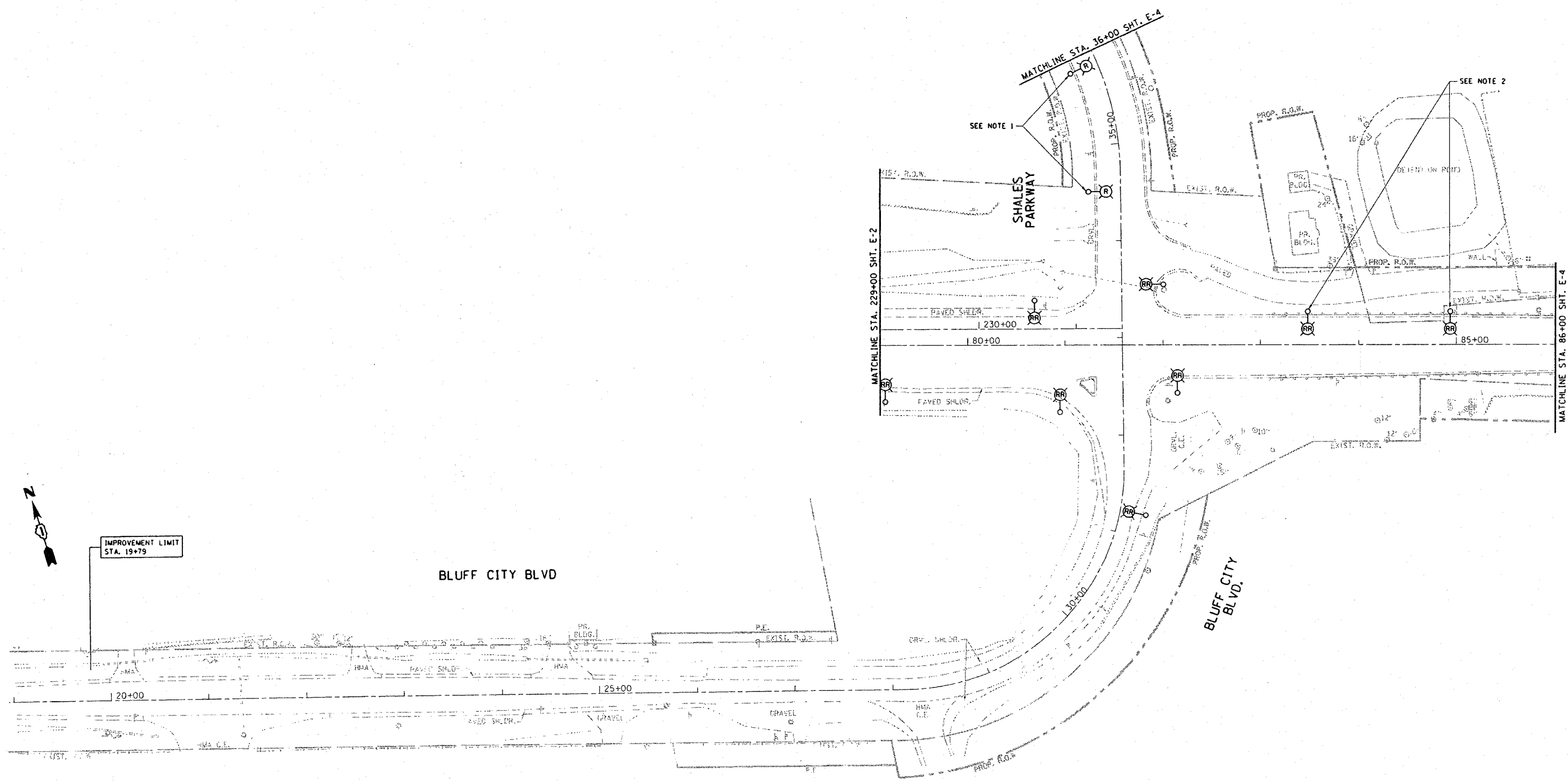


F.A.I. RTE.	SECTION	COUNTY	TOTAL SHEETS	SHEET NO.
345	BR-1N-1	COOK	196	95
STA. 229+00		TO STA. 86+00		
FED. ROAD DIST. NO.		ILLINOIS	FED. AID PROJECT	



IMPROVEMENT LIMIT  
STA. 19+79

BLUFF CITY BLVD

BLUFF CITY  
BLVD.

PLOT DATE : 2/4/2008  
FILE NAME : s:\projects\11783\shales\_lighting.dgn  
USER NAME : greggfanob

- NOTES:**
- CONTRACTOR TO REMOVE AND TRANSPORT LIGHT POLES TO THE CITY OF ELGIN LOCATION AS DESIGNATED BY THE ENGINEER.
  - THE EXISTING MAST ARMS SHALL BE REMOVED AND REPLACED WITH 15 FOOT MAST ARMS FROM STATE STOCK. THIS WORK SHALL BE INCLUDED AS PART OF THE "RELOCATION OF EXISTING LIGHTING UNIT" PAY ITEM.

REVISIONS	
NAME	DATE

ILLINOIS DEPARTMENT OF TRANSPORTATION  
**EXISTING LIGHTING PLAN 2**  
**U.S. ROUTE 20 @**  
**SHALES PARKWAY**

SCALE: VERT. 1"=50'  
HORIZ. 1"=50'  
DATE 2/4/2008  
DRAWN BY AC  
CHECKED BY MEA/MJ