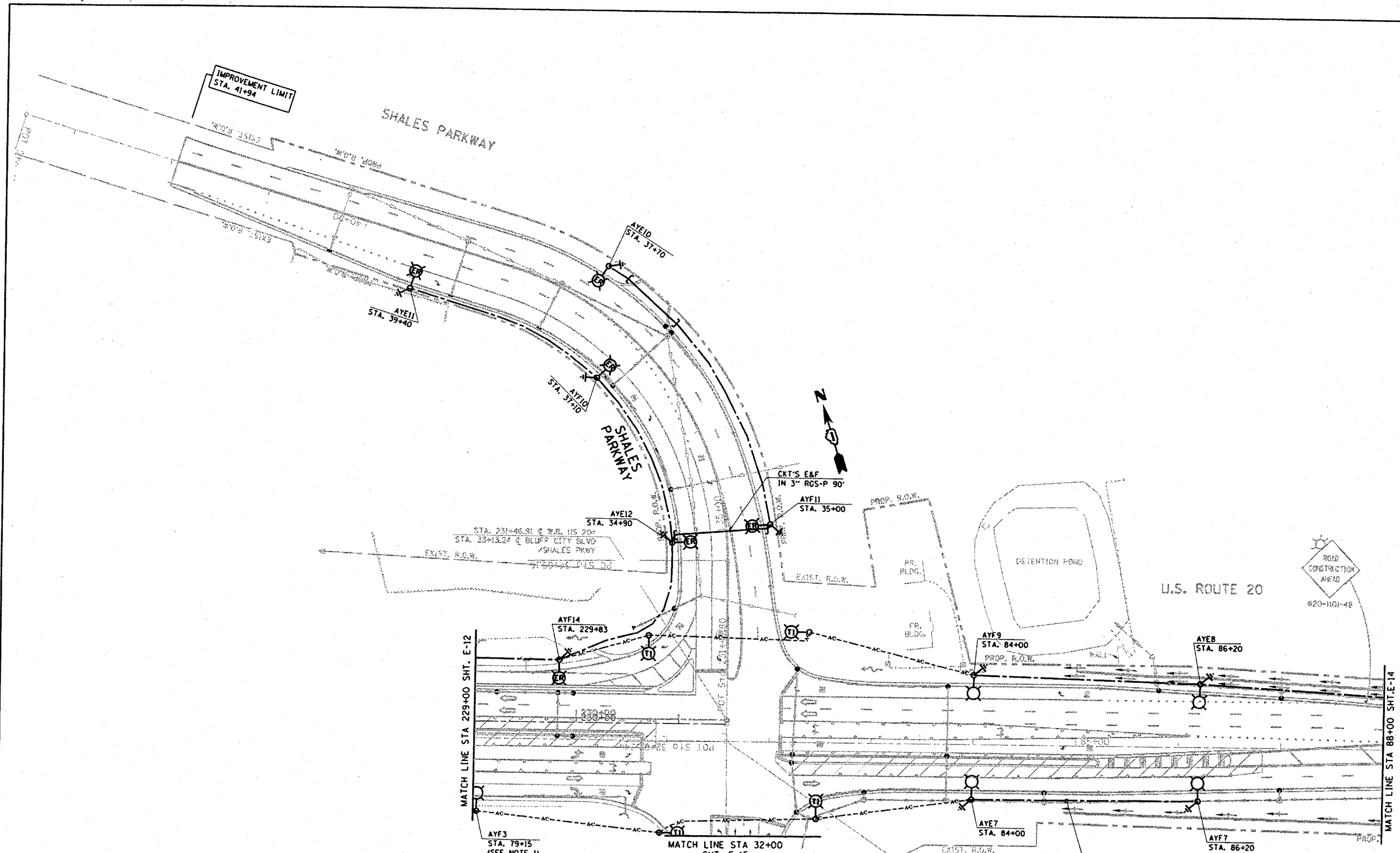

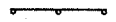
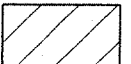


CONTRACT NO.				
F.A. RTE.	SECTION	COUNTY	TOTAL SHEETS	SHEET NO.
345	82-1-N-1	COOK	196	105
STA.		TO STA.		
FED. ROAD DIST. NO.		ILLINOIS FED. AID PROJECT		



LEGEND

-  SIGN
-  DRUMS WITH STEADY BURN MONODIRECTIONAL LIGHT
- 50' C-C TANGENTS
- 25' C-C LANE SHIFTS & TAPERS
- 10' C-C RADII (TYP)
-  WORK AREA

NOTES

1. LIGHT POLE ALUMINUM 55 FT. MOUNTING HEIGHT, 15 FT MAST ARM (9'-6" NOMINAL RISE) BREAKAWAY DEVICE, AND 600W LITHONIA SHOE BOX FIXTURE KSF3 SERIES, 240V, SCWA BALLAST WITH NATURAL ALUMINUM FINISH AND TYPE III DISTRIBUTION OR APPROVED EQUAL.

REVISIONS	
NAME	DATE

ILLINOIS DEPARTMENT OF TRANSPORTATION
STAGE II CONSTRUCTION LIGHTING PLAN 2
U.S. RTE. 20 @ SHALES PARKWAY AND BLUFF CITY BLVD.
 SCALE: VERT. 1"=50'
 HORIZ. DATE 3/27/2008
 DRAWN BY AC
 CHECKED BY MEA/MJ

PLOT DATE: 3/27/2008
 PLOT SCALE: 1/8"=1'-0"
 USER NAME: gregjordan