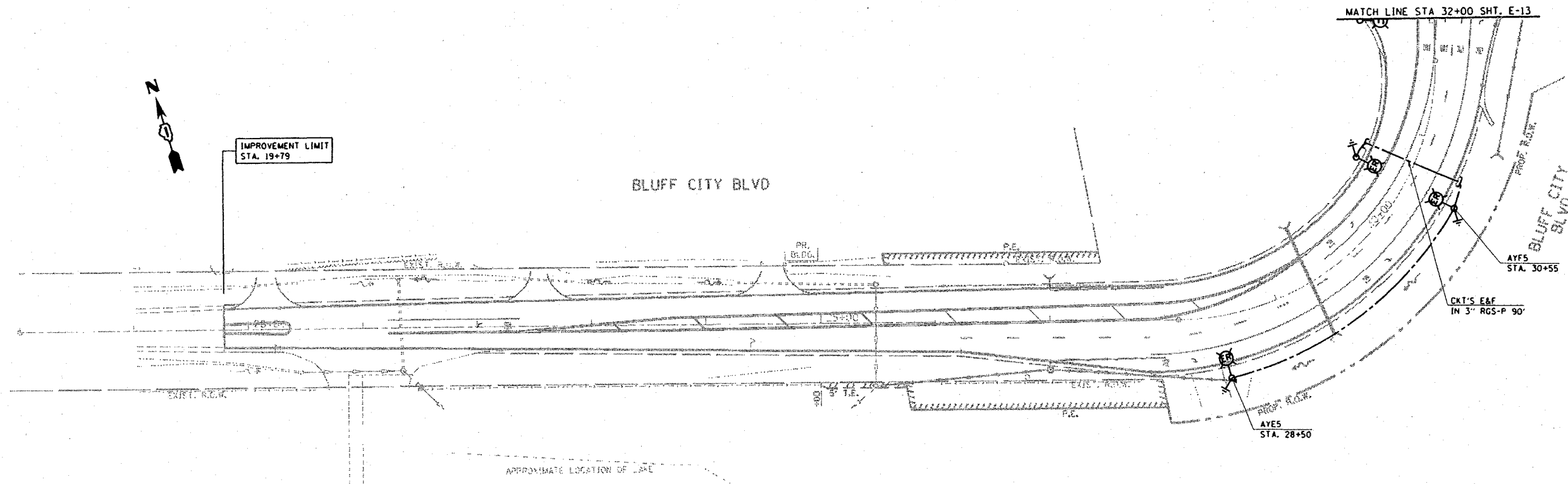


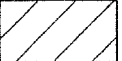


F.A. RTE.	SECTION	COUNTY	TOTAL SHEETS	SHEET NO.
345	82-1-N-1	COOK	196	107
STA.	TO STA.			
FED. ROAD DIST. NO.	ILLINOIS	FED. AID PROJECT		



**LEGEND**

-  SIGN
-  DRUMS WITH STEADY BURN MONODIRECTIONAL LIGHT
- 50' C-C TANGENTS
- 25' C-C LANE SHIFTS & TAPERS
- 10' C-C RADII (TYP)
-  WORK AREA

PLOT DATE : 2/4/2008  
 FILE NAME : c:\projects\113703\sh\_stage.dgn  
 PLOT SCALE : 1/8"=1'-0"  
 USER NAME : gogginobst

REVISIONS	
NAME	DATE

ILLINOIS DEPARTMENT OF TRANSPORTATION  
**STAGE II CONSTRUCTION LIGHTING PLAN 4**  
**U.S. RTE. 20 @ SHALES PARKWAY AND BLUFF CITY BLVD.**  
 VERT. SCALE: 1"=50'  
 HORIZ. SCALE: 1"=50'  
 DATE 2/4/2008  
 DRAWN BY AC  
 CHECKED BY MEA/MJ