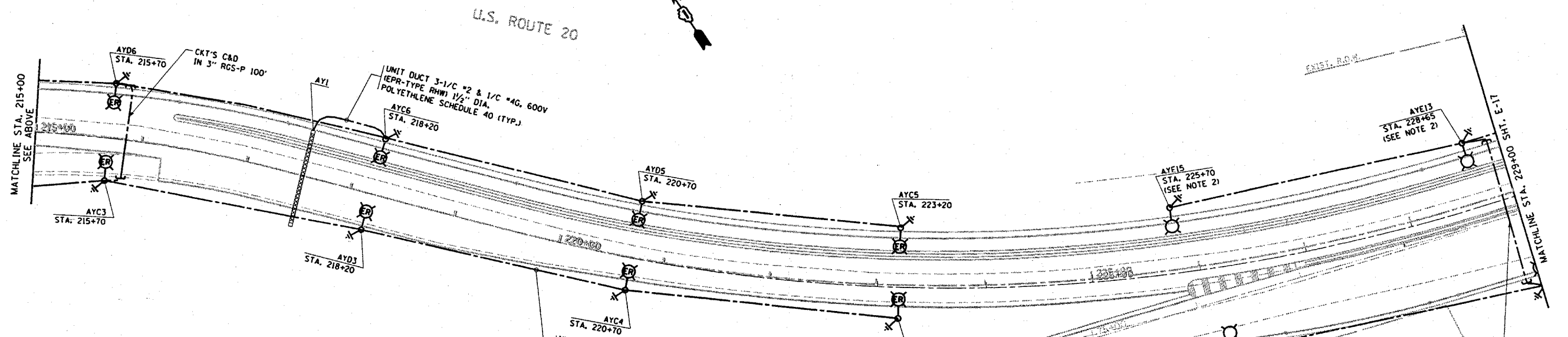
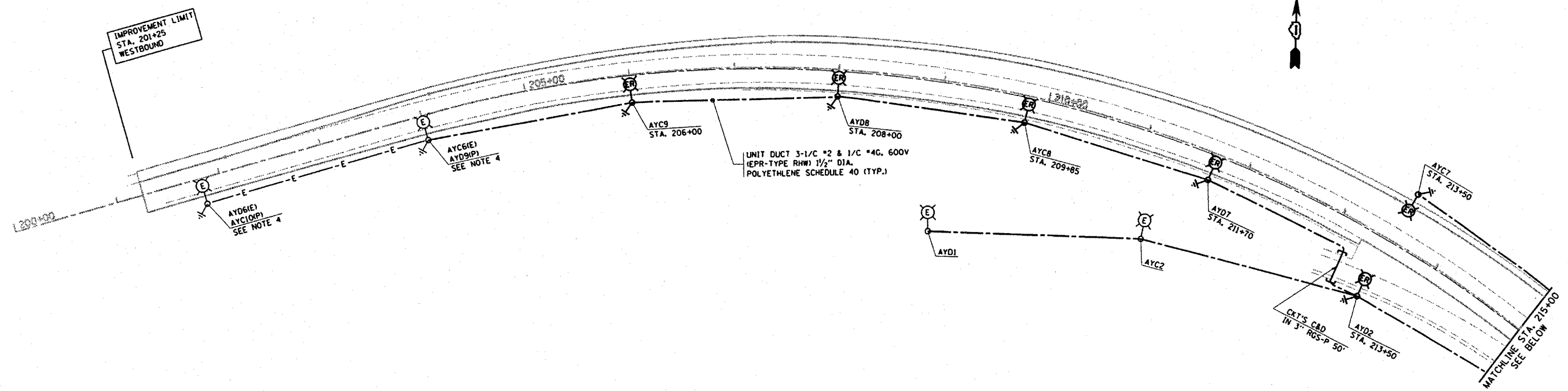


F.A.I. RTE.	SECTION	COUNTY	TOTAL SHEETS	SHEET NO.
345	BR-IN-1	COOK	196	108
STA. 201+25		TO STA. 229+00		
FED. ROAD DIST. NO.		ILLINOIS FED. AID PROJECT		

U.S. ROUTE 20



NOTES:

- REFER TO THE TRAFFIC SIGNAL PLANS FOR EXACT LOCATIONS OF COMBINATION TRAFFIC SIGNAL/LIGHT POLES AT INTERSECTION.
- LIGHT POLE ALUMINUM 55 FT. MOUNTING HEIGHT, 15 FT MAST ARM (9'-6" NOMINAL RISE), BREAKAWAY DEVICE, AND 600M LITHONIA SHOE BOX FIXTURE KSF3 SERIES, 240V, SCWA BALLAST WITH NATURAL ALUMINUM FINISH AND TYPE III DISTRIBUTION OR APPROVED EQUAL. THESE LIGHT POLES AND MAST ARMS WILL BE RETRIEVED FROM STATE STOCK.
- LIGHT POLES, AYE10, AYE11, AYE12, AYF10, AYF11 AND ALL THE COMBINATION POLES SHALL HAVE A LUMINAIRE KEEPER INSTALLED.
- EXISTING LIGHTING UNITS C6 AND D6 SHALL BE RE-CIRCUITED AND RE-LABELLED AS SHOWN. THIS WORK SHALL BE INCLUDED IN THE COST OF "RELOCATE EXISTING LIGHTING UNIT".

REVISIONS	
NAME	DATE

ILLINOIS DEPARTMENT OF TRANSPORTATION
PROPOSED LIGHTING PLAN 1
U.S. ROUTE 20 @
SHALES PARKWAY

SCALE: VERT. 1"=50'
 HORIZ. 1"=50'
 DATE 3/25/2008
 DRAWN BY
 CHECKED BY MEA/MJ

PLOT DATE: 3/25/2008
 FILE NAME: c:\projects\1113703\sh_lighting.dgn
 PLOT SCALE: 1/8"=1'-0"
 USER NAME: gagi/anobl