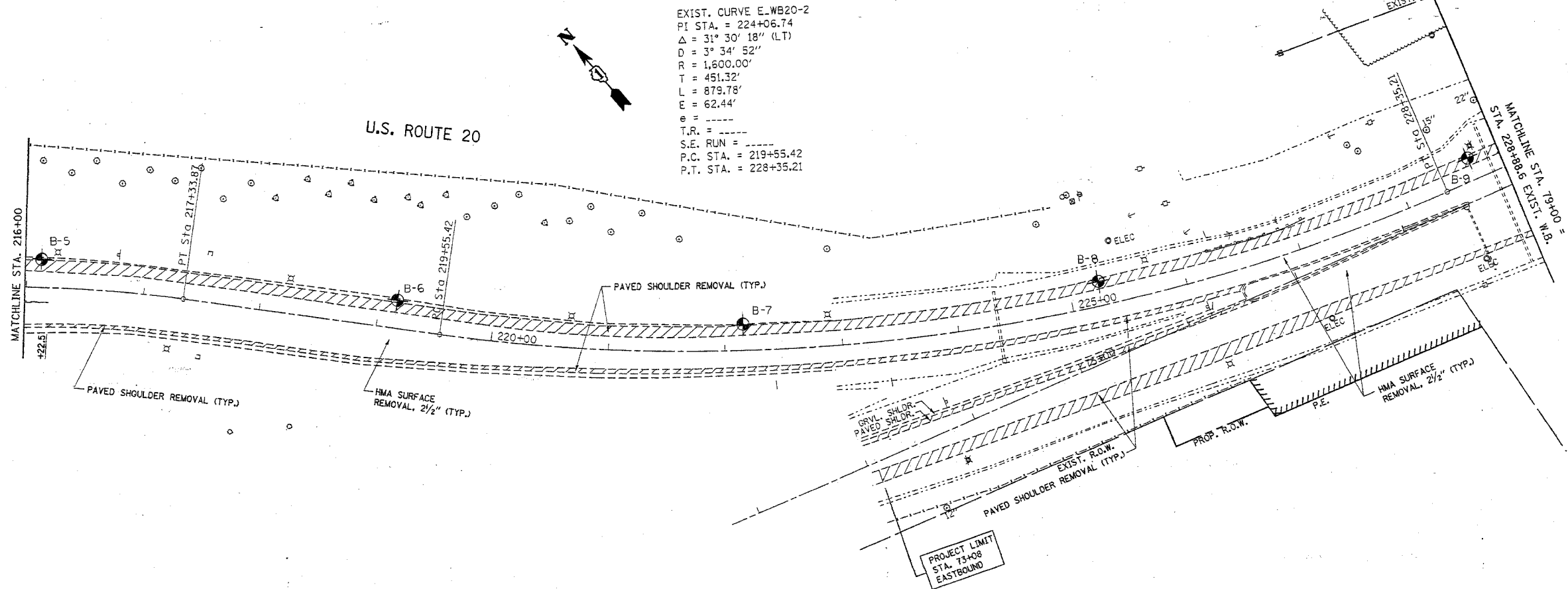


*REF-topo02
*REF-pp02

F.A.P. RTE.	SECTION	COUNTY	TOTAL SHEETS	SHEET NO.
345	BR-1-N-1	COOK	196	143

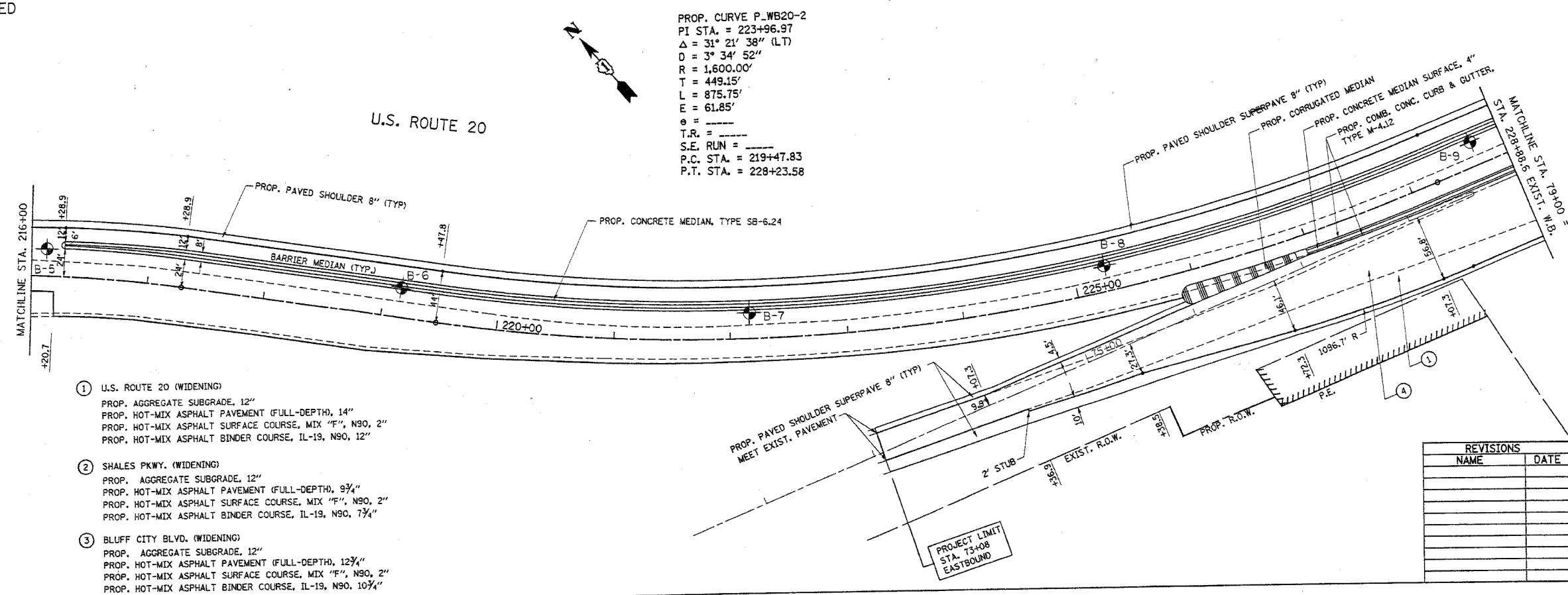
STA. 216+00 WB 73+08 EB TO STA. 79+00=228+91.7
FED. ROAD DIST. NO. 1 ILLINOIS FED. AID PROJECT

CONTRACT NO. 62617



EXISTING

PROPOSED



- ① U.S. ROUTE 20 (WIDENING)
PROP. AGGREGATE SUBGRADE, 12"
PROP. HOT-MIX ASPHALT PAVEMENT (FULL-DEPTH), 14"
PROP. HOT-MIX ASPHALT SURFACE COURSE, MIX "F", N90, 2"
PROP. HOT-MIX ASPHALT BINDER COURSE, IL-19, N90, 12"
- ② SHALES PKWY. (WIDENING)
PROP. AGGREGATE SUBGRADE, 12"
PROP. HOT-MIX ASPHALT PAVEMENT (FULL-DEPTH), 9 3/4"
PROP. HOT-MIX ASPHALT SURFACE COURSE, MIX "F", N90, 2"
PROP. HOT-MIX ASPHALT BINDER COURSE, IL-19, N90, 7 3/4"
- ③ BLUFF CITY BLVD. (WIDENING)
PROP. AGGREGATE SUBGRADE, 12"
PROP. HOT-MIX ASPHALT PAVEMENT (FULL-DEPTH), 12 3/4"
PROP. HOT-MIX ASPHALT SURFACE COURSE, MIX "F", N90, 2"
PROP. HOT-MIX ASPHALT BINDER COURSE, IL-19, N90, 10 3/4"

REVISIONS	
NAME	DATE

ILLINOIS DEPARTMENT OF TRANSPORTATION
EXISTING AND PROPOSED
ROADWAY PLAN
U.S. 20 AT
BLUFF CITY/ SHALES PKWY.

SCALE: VERT. 1"= 50'
HORIZ. 1"= 50'
DATE 5/29/2007

DRAWN BY
CHECKED BY