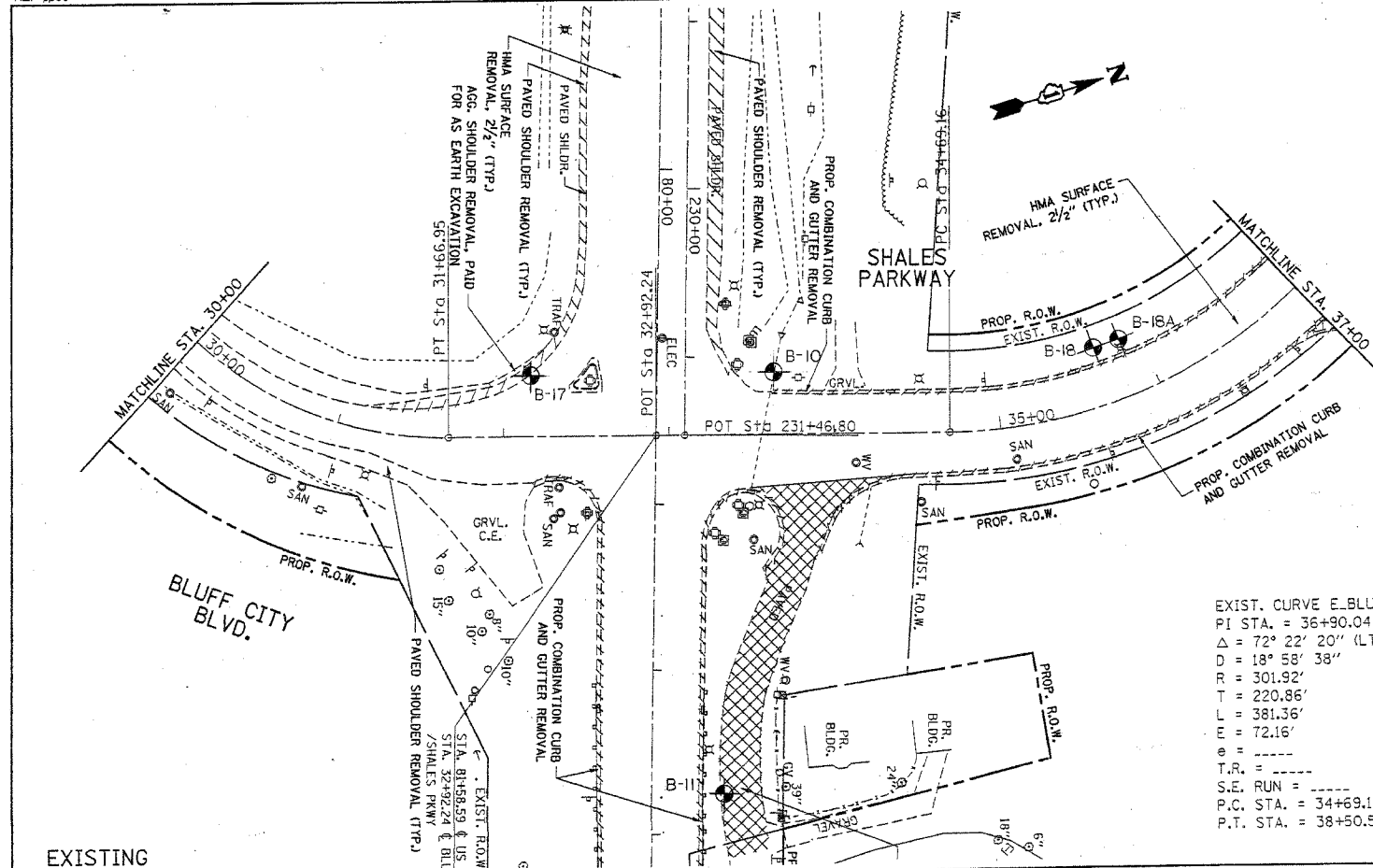


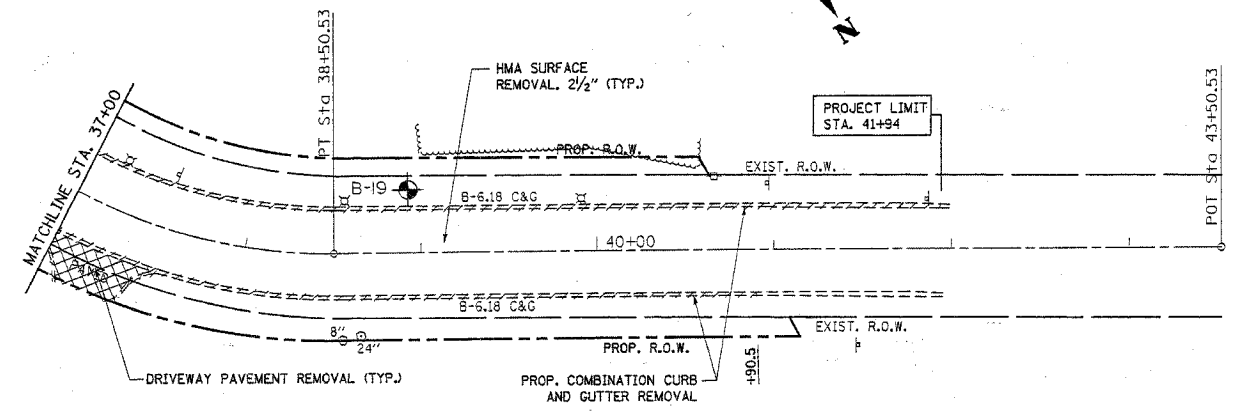
*REF-10005
 *REF-10005
 *REF-10006
 *REF-10006

F.A.P. RTE.	SECTION	COUNTY	TOTAL SHEETS	SHEET NO.
345	BR-1-N-1	COOK	196	149
STA. 30+00		TO STA. 37+00		
FED. ROAD DIST. NO. 1 ILLINOIS FED. AID PROJECT				

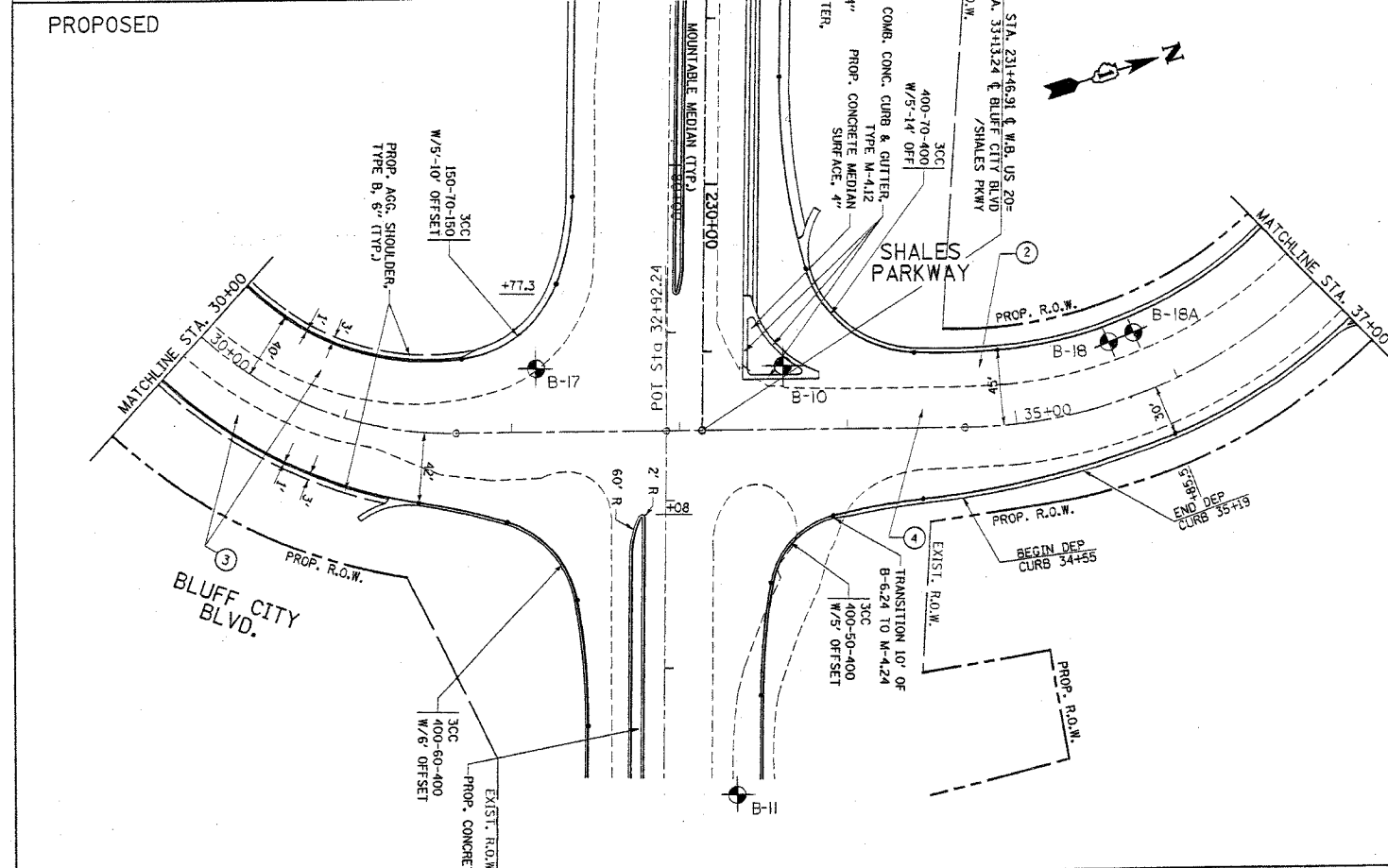
CONTRACT NO. 62617



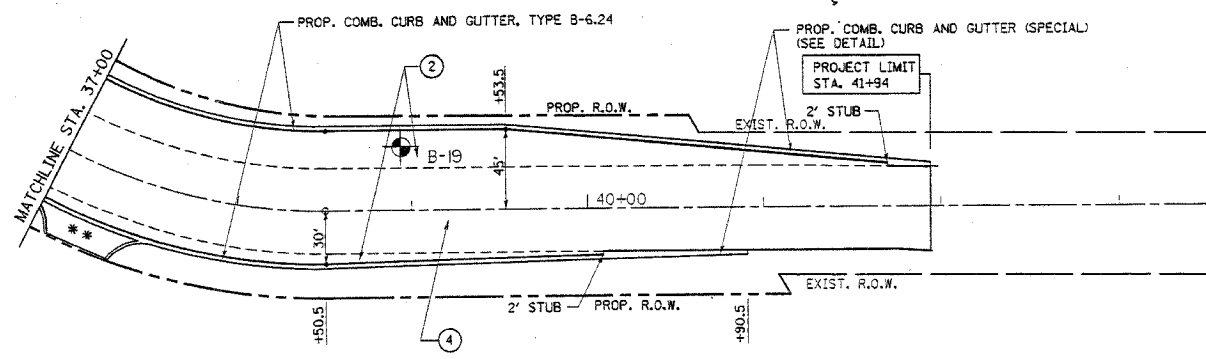
EXIST. CURVE E-BLUFF-2
 PI STA. = 36+90.04
 $\Delta = 72^\circ 22' 20''$ (LT)
 $D = 18^\circ 58' 38''$
 $R = 301.92'$
 $T = 220.86'$
 $L = 381.36'$
 $M = 72.16'$
 $T.P. =$
 $S.E. RUN =$
 $P.C. STA. = 34+69.18$
 $P.T. STA. = 38+50.54$



LEGEND (SEE DRIVEWAY DETAILS)
 * BITUMINOUS DRIVEWAY - RESIDENTIAL ENTRANCE
 ** BITUMINOUS DRIVEWAY - COMMERCIAL ENTRANCE
 *** RIGID DRIVEWAY - COMMERCIAL ENTRANCE



- ① U.S. ROUTE 20 (WIDENING)
 PROP. AGGREGATE SUBGRADE, 12"
 PROP. HOT-MIX ASPHALT PAVEMENT (FULL-DEPTH, 14")
 PROP. HOT-MIX ASPHALT SURFACE COURSE, MIX "F", N90, 2"
 PROP. HOT-MIX ASPHALT BINDER COURSE, IL-19, N90, 12"
- ② SHALES PKWY. (WIDENING)
 PROP. AGGREGATE SUBGRADE, 12"
 PROP. HOT-MIX ASPHALT PAVEMENT (FULL-DEPTH, 9 3/4")
 PROP. HOT-MIX ASPHALT SURFACE COURSE, MIX "F", N90, 2"
 PROP. HOT-MIX ASPHALT BINDER COURSE, IL-19, N90, 7 3/4"
- ③ BLUFF CITY BLVD. (WIDENING)
 PROP. AGGREGATE SUBGRADE, 12"
 PROP. HOT-MIX ASPHALT PAVEMENT (FULL-DEPTH, 12 3/4")
 PROP. HOT-MIX ASPHALT SURFACE COURSE, MIX "F", N90, 2"
 PROP. HOT-MIX ASPHALT BINDER COURSE, IL-19, N90, 10 3/4"



REVISIONS	
NAME	DATE

ILLINOIS DEPARTMENT OF TRANSPORTATION
 EXISTING AND PROPOSED
 ROADWAY PLAN
 U.S. 20 AT
 BLUFF CITY/ SHALES PKWY.
 SCALE: VERT. 1"= 50'
 HORIZ. DATE 5/29/2007
 DRAWN BY
 CHECKED BY