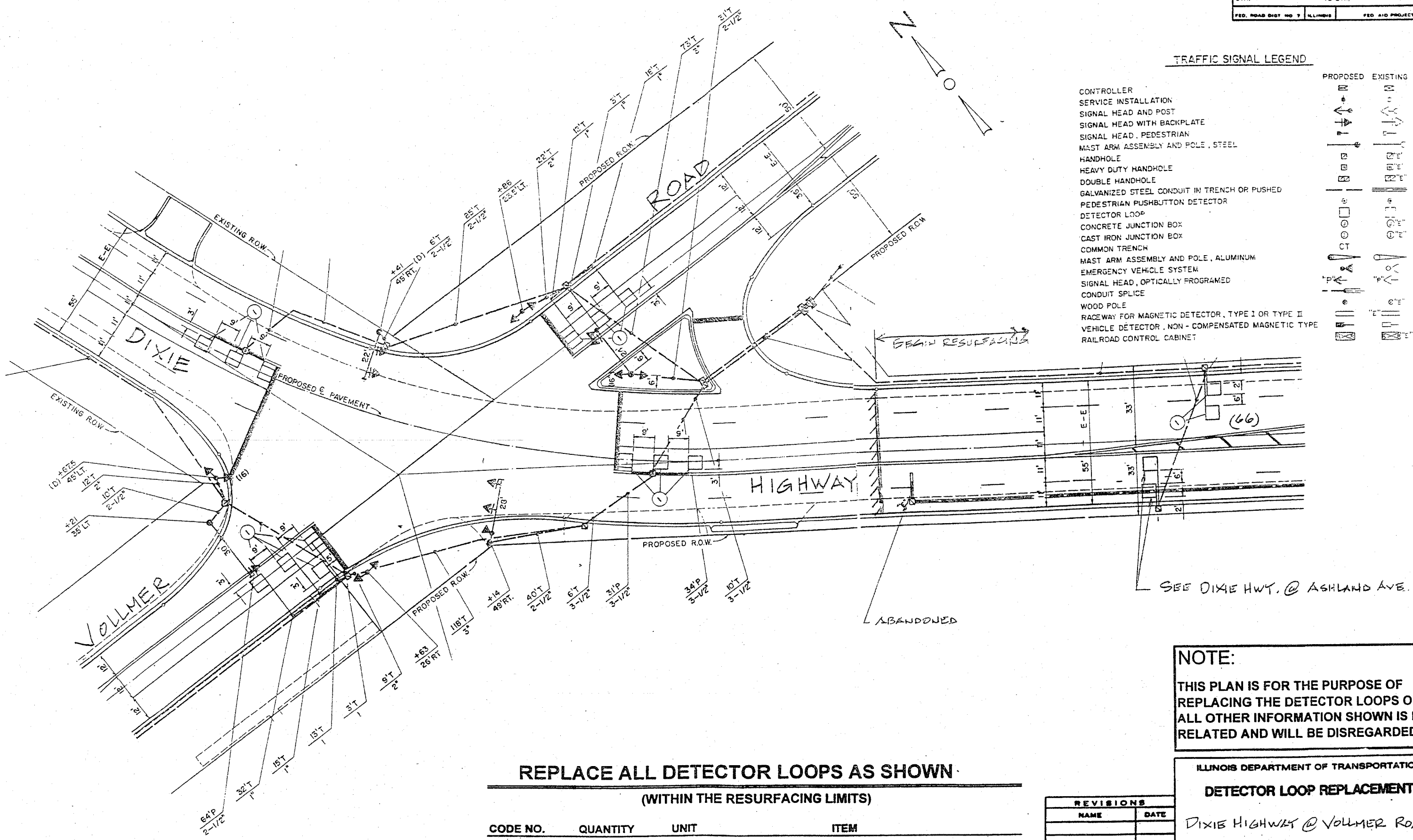


SECTION	COUNTY	TOTAL SHEETS	SHEET NO.
	COOK	24	12
STA. TO STA.		FED. ROAD DIST NO 7 ILLINOIS	
		FED AID PROJECT	

TRAFFIC SIGNAL LEGEND

	PROPOSED	EXISTING
CONTROLLER		
SERVICE INSTALLATION		
SIGNAL HEAD AND POST		
SIGNAL HEAD WITH BACKPLATE		
SIGNAL HEAD, PEDESTRIAN		
MAST ARM ASSEMBLY AND POLE, STEEL		
HANDHOLE		
HEAVY DUTY HANDHOLE		
DOUBLE HANDHOLE		
GALVANIZED STEEL CONDUIT IN TRENCH OR PUSHED		
PEDESTRIAN PUSHBUTTON DETECTOR		
DETECTOR LOOP		
CONCRETE JUNCTION BOX		
CAST IRON JUNCTION BOX		
COMMON TRENCH		
MAST ARM ASSEMBLY AND POLE, ALUMINUM		
EMERGENCY VEHICLE SYSTEM		
SIGNAL HEAD, OPTICALLY PROGRAMMED		
CONDUIT SPLICE		
WOOD POLE		
RACEWAY FOR MAGNETIC DETECTOR, TYPE I OR TYPE II		
VEHICLE DETECTOR, NON-COMPENSATED MAGNETIC TYPE		
RAILROAD CONTROL CABINET		



REPLACE ALL DETECTOR LOOPS AS SHOWN

(WITHIN THE RESURFACING LIMITS)

CODE NO.	QUANTITY	UNIT	ITEM
86600600	666	Foot	Detector Loop Replacement

REVISIONS	
NAME	DATE

NOTE:
THIS PLAN IS FOR THE PURPOSE OF REPLACING THE DETECTOR LOOPS ONLY. ALL OTHER INFORMATION SHOWN IS NOT RELATED AND WILL BE DISREGARDED.

ILLINOIS DEPARTMENT OF TRANSPORTATION
DETECTOR LOOP REPLACEMENT
DIXIE HIGHWAY @ VOLLMER ROAD
SCALE: 1" = 20'
DATE: MAR. 04
DRAWN BY: _____
DESIGNED BY: _____
CHECKED BY: _____