

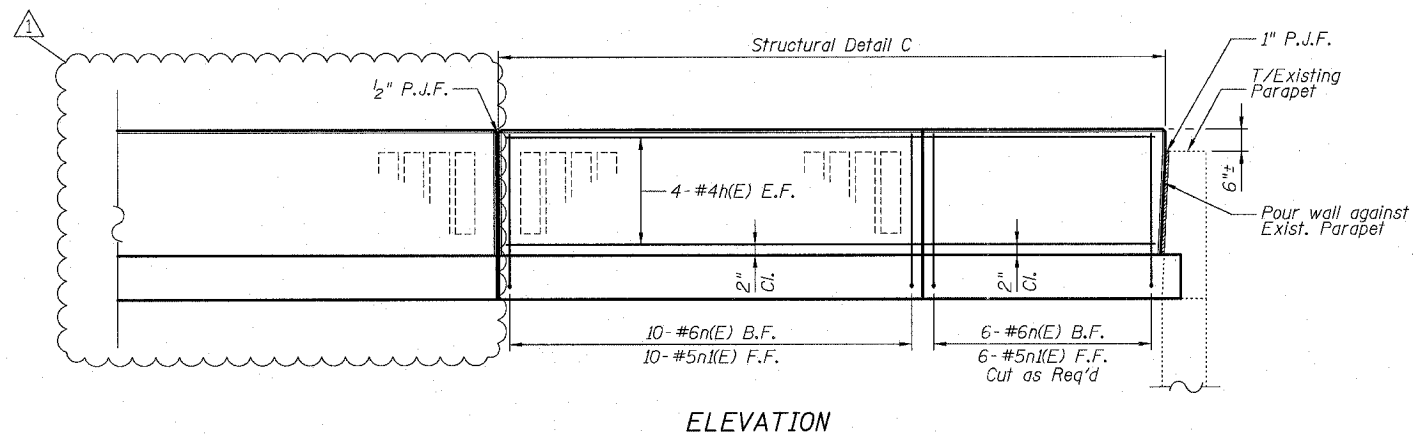
F.A.I.	SECTION	COUNTY	TOTAL SHEETS	SHEET NO.
94/90	*	COOK	29	17
STA.	TO STA.			
FED. ROAD DIST. NO.	ILLINOIS	FED. AID PROJECT		
62993		2324.6-1P-1-1		

**DETAIL C REINFORCEMENT  
SCHEDULE AND  
BILL OF MATERIAL**

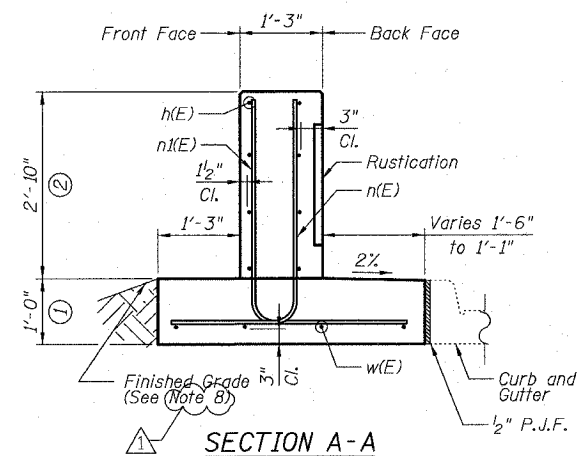
Bar	No.	Size	Length	Shape
h(E)	8	#4	14'-8"	—
n(E)	16	#6	5'-6"	L
n(E)	16	#5	5'-10"	L
w(E)	4	#4	14'-8"	—
Item Unit Qty.				
① Concrete Structures			Cu. Yd.	2.3
② Concrete Superstructure			Cu. Yd.	2.0
Reinforcement Bars, Epoxy Coated			Pound	350
Rustication Finish			Sq. Ft.	16
Protective Coat			Sq. Yd.	10

**NOTES:**

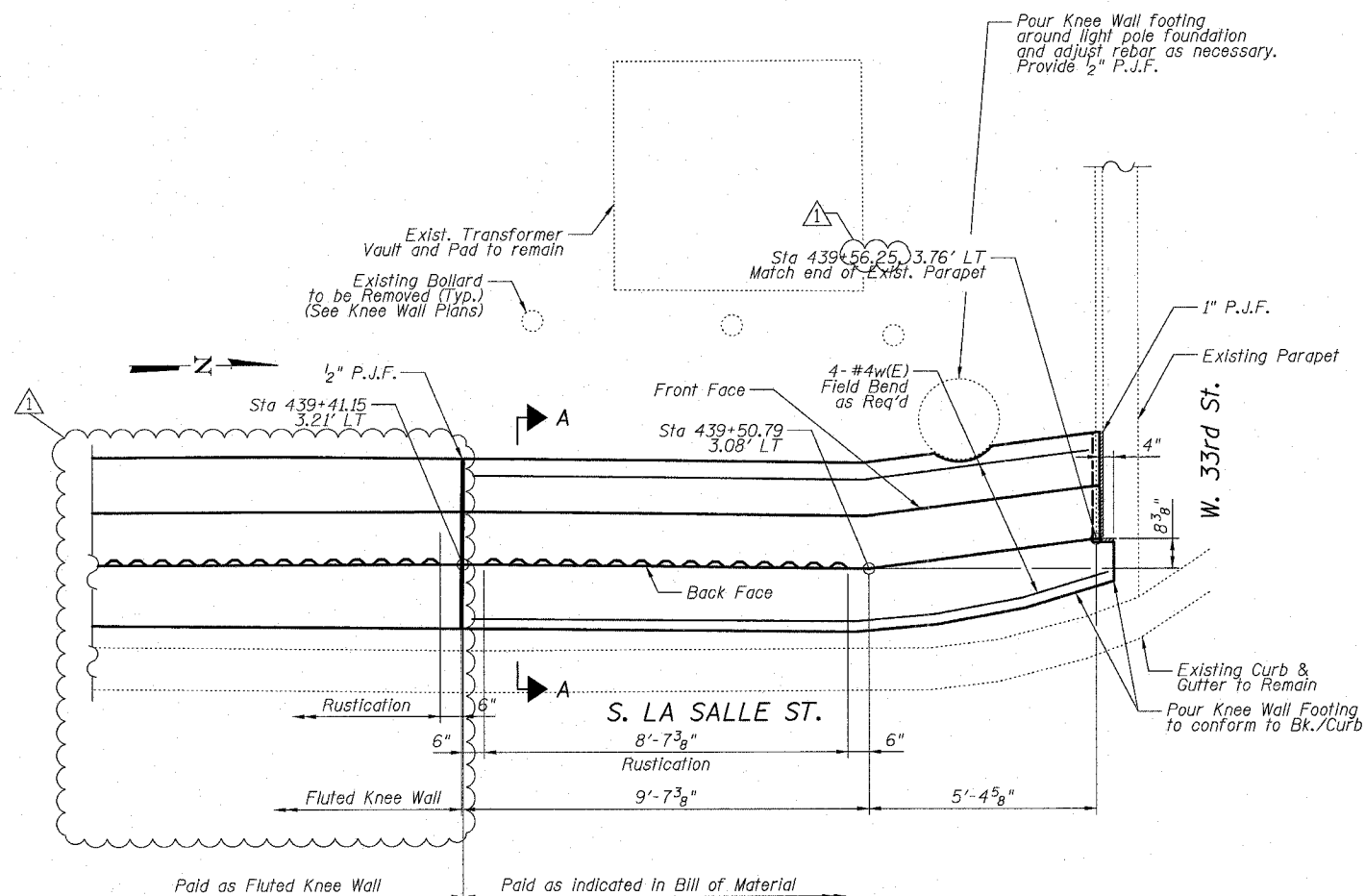
- All stations and offsets measured from S. La Salle St. @.
- Concrete:  $f'c = 3500$  psi
- Provide California Finish on top of foundation between stem and Frontage Road. See Roadway Details.
- At locations where Fluted Knee Wall abuts a rigid structure, a 1" thick Preformed Expansion Joint Filler conforming to the shape of the structure shall be installed between the wall and the structure.
- Apply Protective Coat to top and back face of stem and top of Frontage Road side of foundation.
- For Fluted Knee Wall standard details, see Sheet SD-1
- B.F. = Back Face (Frontage Road Side)  
F.F. = Front Face (Expressway Side)  
E.F. = Each Face
- Shape finished grade as required to match existing conditions.
- P.J.F. included in cost of concrete structures.



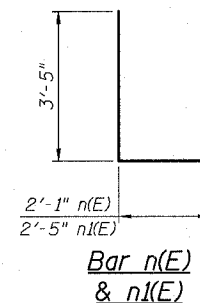
**ELEVATION**



**SECTION A-A**



**PLAN**



**Bar n(E)  
& n(E)**

BOWMAN, BARRETT & ASSOCIATES INC.  
CONSULTING ENGINEERS  
Chicago, Illinois  
312.228.0100  
www.bbainc.com

REVISIONS	
NAME	DATE
REVISED	3-6-08
ADDENDUM 1	5-30-08

ILLINOIS DEPARTMENT OF TRANSPORTATION  
F.A.I. 94/90 (DAN RYAN EXPRESSWAY)  
NORTHBOUND KNEE WALLS (35TH ST TO 33RD ST)

DETAIL C

SCALE: N.T.S.  
DATE: 03/06/08

DRAWN BY: LAM  
CHECKED BY: BLU

450233 PM 5/29/2008