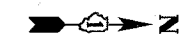
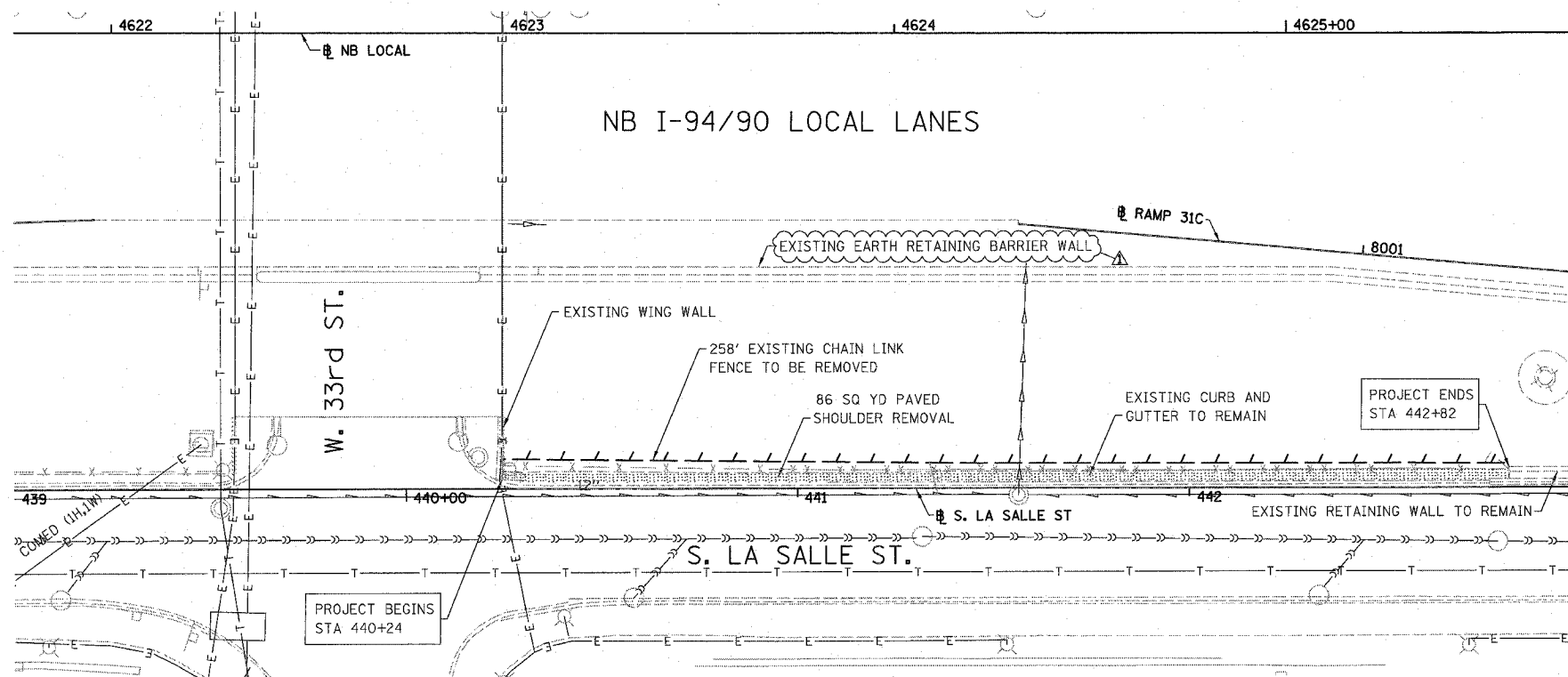
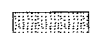

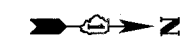
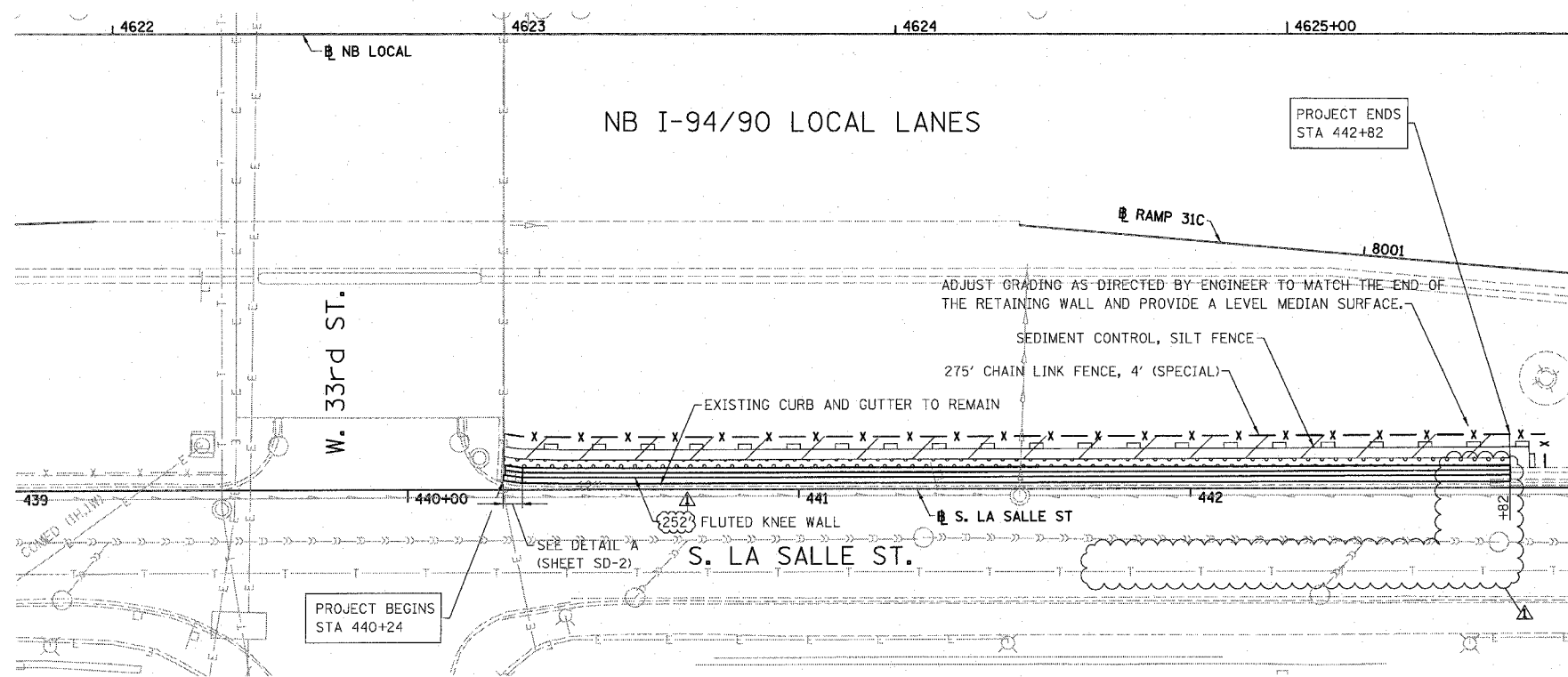


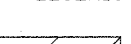

| | | | | |
|---------------------|---------------|------------------|--------------|-----------|
| F.A.I. | SECTION | COUNTY | TOTAL SHEETS | SHEET NO. |
| 94/90 | * | COOK | 20 | 10 |
| STA. | TO STA. | | | |
| FED. ROAD DIST. NO. | ILLINOIS | FED. AID PROJECT | | |
| 62994 | 2324.6-1P-1-2 | | | |



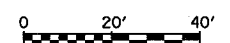
- LEGEND:
-  PAVED SHOULDER REMOVAL
 -  LINEAR REMOVALS

EXISTING CONDITIONS AND REMOVAL
PROPOSED IMPROVEMENTS



- LEGEND:
-  SEEDING, CLASS 2A
EROSION CONTROL BLANKET
 -  TOPSOIL FURNISH AND PLACE, 12"
SEEDING, CLASS 2A
EROSION CONTROL BLANKET

- NOTES:
1. SEE STRUCTURAL DETAIL FOR FLUTED KNEE WALL DETAILS.
 2. ALL POINT CALLOUTS ARE TAKEN AT THE EDGE OF THE KNEE WALL BASE.



| REVISIONS | |
|-----------|---------|
| NAME | DATE |
| REVISED | 3-6-08 |
| REVISED | 5-30-08 |
| | |
| | |
| | |
| | |
| | |

ILLINOIS DEPARTMENT OF TRANSPORTATION
F.A.I. 94/90 (DAN RYAN EXPRESSWAY)
NORTHBOUND KNEE WALLS (33RD TO 31ST ST)

EXISTING AND PROPOSED
KNEE WALL PLANS

SCALE: 1"=20'
DATE: 03/06/08

DRAWN BY: JDC
CHECKED BY: DDM

BOWMAN, BARRETT & ASSOCIATES INC.
CONSULTING ENGINEERS
Chicago, Illinois
312.228.0100
www.bbainc.com

4/5/2008 5:29:26 PM