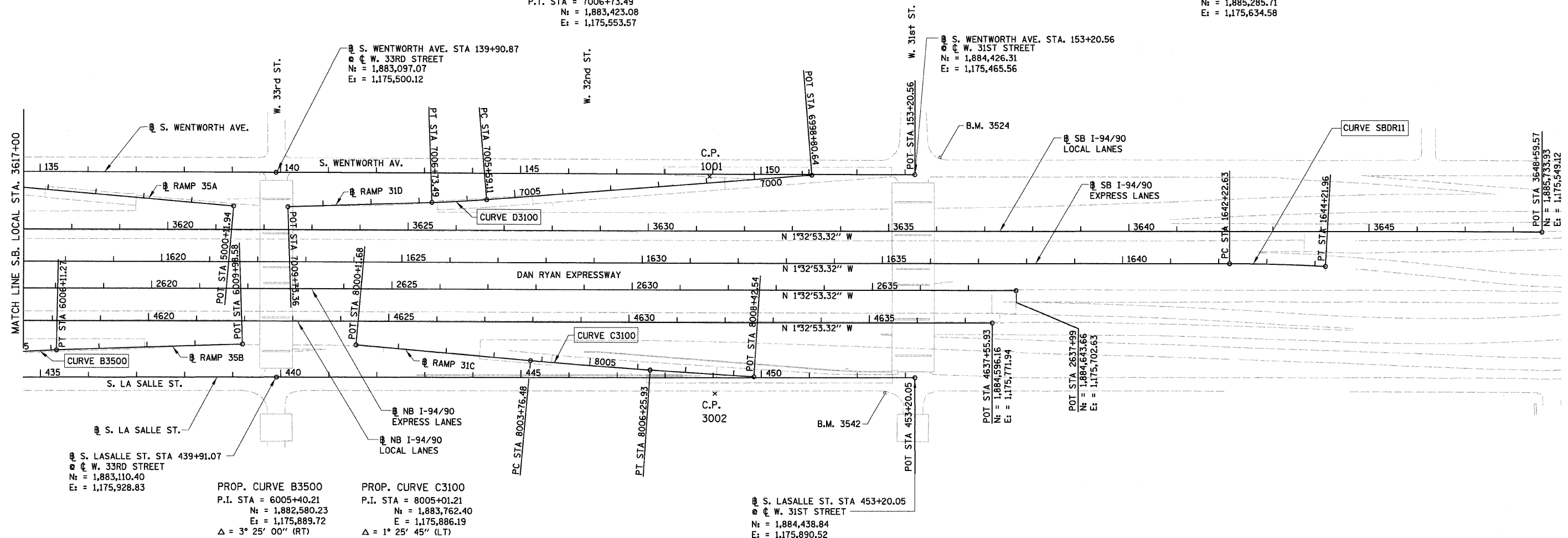


F.A.I.	SECTION	COUNTY	TOTAL SHEETS	SHEET NO.
94/90		COOK	20	8
STA.		TO STA.		
FED. ROAD DIST. NO.	ILLINOIS	FED. AID PROJECT		

62994 • 2324.6-1P-1-2

PROP. CURVE D3100  
 P.I. STA = 7006+16.31  
 N = 1,883,480.18  
 E = 1,175,550.12  
 $\Delta = 2^\circ 35' 11''$  (RT)  
 D = 2° 15' 40"  
 R = 2,534.00'  
 T = 57.20'  
 L = 114.38'  
 E = 0.65'  
 $e = 2.6\%$   
 S.A. = STA 7005+43.11  
 TO 7005+63.11  
 S.R. = STA 7006+69.49  
 TO 7006+89.49  
 P.C. STA = 7005+59.11  
 N = 1,883,537.06  
 E = 1,175,544.09  
 P.T. STA = 7006+73.49  
 N = 1,883,423.08  
 E = 1,175,553.57

PROP. CURVE SBDR11  
 P.I. STA = 1643+22.32  
 N = 1,885,186.06  
 E = 1,175,631.95  
 $\Delta = 3^\circ 03' 18''$  (RT)  
 D = 1° 31' 57"  
 R = 3,738.57'  
 T = 99.69'  
 L = 199.33'  
 E = 1.33'  
 $e = \pm 2.5\%$  (MATCH EXISTING)  
 S.A. = STA 1641+95.99  
 TO 1642+35.95  
 S.R. = N/A  
 P.C. STA = 1642+22.63  
 N = 1,885,086.40  
 E = 1,175,634.65  
 P.T. STA = 1644+21.96  
 N = 1,885,285.71  
 E = 1,175,634.58



S. LASALLE ST. STA 439+91.07  
 W. 33RD STREET  
 N = 1,883,110.40  
 E = 1,175,928.83

PROP. CURVE B3500  
 P.I. STA = 6005+40.21  
 N = 1,882,580.23  
 E = 1,175,889.72  
 $\Delta = 3^\circ 25' 00''$  (RT)  
 D = 2° 24' 12"  
 R = 2,384.00'  
 T = 71.10'  
 L = 142.16'  
 E = 1.06'  
 $e = 2.7\%$   
 S.A. = STA 6004+53.11  
 TO 6004+73.11  
 S.R. = STA 6006+07.27  
 TO 6006+27.27  
 P.C. STA = 6004+69.11  
 N = 1,882,509.63  
 E = 1,175,898.23  
 P.T. STA = 6006+11.27  
 N = 1,882,651.20  
 E = 1,175,885.43

PROP. CURVE C3100  
 P.I. STA = 8005+01.21  
 N = 1,883,762.40  
 E = 1,175,886.19  
 $\Delta = 1^\circ 25' 45''$  (LT)  
 D = 0° 34' 23"  
 R = 10,000.00'  
 T = 124.73'  
 L = 249.45'  
 E = 0.78'  
 P.C. STA = 8003+76.48  
 N = 1,883,637.89  
 E = 1,175,878.68  
 P.T. STA = 8006+25.93  
 N = 1,883,887.05  
 E = 1,175,890.60

S. LASALLE ST. STA 453+20.05  
 W. 31ST STREET  
 N = 1,884,438.84  
 E = 1,175,890.52

**NOTES:**

- AVERAGE GRID TO GROUND CONVERSION  
 FACTOR = 1.000010988654360
- FOR BENCH MARK INFORMATION, SEE SHEET ALT-16 OF ALIGNMENT PLAN SHEETS.
- FOR RAMP P.O.T. INFORMATION, SEE SHEET ALT-16 OF ALIGNMENT PLAN SHEETS.

BOWMAN, BARRETT & ASSOCIATES INC.  
 CONSULTING ENGINEERS  
 Chicago, Illinois  
 312.228.0100  
 www.bbandoi.com



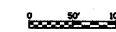
REVISIONS	
NAME	DATE
REVISED	3-6-08

ILLINOIS DEPARTMENT OF TRANSPORTATION  
 F.A.I. 94/90 (DAN RYAN EXPRESSWAY)  
 NORTHBOUND KNEE WALLS (33RD ST TO 31ST ST)

ALIGNMENT PLAN

SCALE: 1"=100'  
 DATE: 03/06/08

DRAWN BY: JDC  
 CHECKED BY: RS



3/6/2008 12:27:23 PM ALT-04