

F.A.I.	SECTION	COUNTY	TOTAL SHEETS	SHEET NO.
94/90	*	COOK	22	3
STA.	TO STA.			
FED. ROAD DIST. NO.	ILLINOIS	FED. AID PROJECT		

62999

SUMMARY OF QUANTITIES

CODE NO.	ITEM	UNIT	QUANTITY	URBAN
				100% STATE
20200100	EARTH EXCAVATION	CU YD	132	132
21101645	TOPSOIL FURNISH AND PLACE, 12"	SQ YD	132	132
25000210	SEEDING, CLASS 2A	ACRE	0.08	0.08
25000400	NITROGEN FERTILIZER NUTRIENT	POUND	8	8
25000500	PHOSPHORUS FERTILIZER NUTRIENT	POUND	8	8
25000600	POTASSIUM FERTILIZER NUTRIENT	POUND	8	8
25000800	GROUND PREPARATION FOR SEEDING	ACRE	0.05	0.05
25100630	EROSION CONTROL BLANKET	SQ YD	364	364
42001300	PROTECTIVE COAT	SQ YD	27	27
44004250	PAVED SHOULDER REMOVAL	SQ YD	49	49
50300225	CONCRETE STRUCTURES	CU YD	25	25
50300255	CONCRETE SUPERSTRUCTURE	CU YD	15	15
50300300	PROTECTIVE COAT	SQ YD	71	71
50300500	RUSTICATION FINISH	SQ FT	35	35
50000255	REINFORCEMENT BARS, EPDM COATED	POUND	100	100
60618324	CONCRETE MEDIAN SURFACE, 6' (SPECIAL)	SQ FT	188	188
66400550	CHAIN LINK FENCE, 4' (SPECIAL)	FOOT	580	580
67100100	MOBILIZATION	L SUM	1	1
70101800	TRAFFIC CONTROL AND PROTECTION, (SPECIAL)	L SUM	1	1
X0322256	TEMPORARY INFORMATION SIGNING	SQ FT	26	26
X0323973	SEDIMENT CONTROL, SILT FENCE	FOOT	624	624
X0323974	SEDIMENT CONTROL, SILT FENCE MAINTENANCE	FOOT	156	156
X0324640	FLUTED KNEE WALL	FOOT	409	409
X0325710	CONCRETE MEDIAN SURFACE, 5' (MODIFIED)	SQ FT	18	18
70106800	CHANGEABLE MESSAGE SIGN	CAL MO	6	6
Z0013798	CONSTRUCTION LAYOUT	L SUM	1	1
X0325891	IMPACT ATTENUATORS (FULLY REDIRECTIVE, RESETTABLE), TEST LEVEL 2	EACH	1	1
Z0076600	TRAINEES	HOURL		
44002300	CURB REMOVAL (PARTIAL)	FOOT	59	59

INDEX OF SHEETS

SHEET	DESCRIPTION
1	COVER SHEET
2	GENERAL NOTES AND PROJECT COMMITMENTS
3	SUMMARY OF QUANTITIES / INDEX / HIGHWAY STANDARDS
4	EXISTING AND PROPOSED TYPICAL SECTIONS
5-9	ALIGNMENT PLANS, SURVEY TIES AND CONTROL POINTS
10-11	EXISTING AND PROPOSED KNEE WALL PLANS
12-13A	STRUCTURAL DETAILS
14	BD-51 DISTRICT 1, BENCHING DETAIL FOR EMBANKMENT WIDENING
15	TC-10 DISTRICT 1, TRAFFIC CONTROL AND PROTECTION FOR SIDE ROADS, INTERSECTIONS & DRIVEWAYS
16	TC-17 DISTRICT 1, TRAFFIC CONTROL DETAILS FOR FREEWAY SHOULDER CLOSURES PARTIAL RAMP CLOSURES
17	TC-18 DISTRICT 1, SIGNING FOR FLAGGING OPERATIONS AT WORK ZONE OPENINGS
18	TC-22 DISTRICT 1, ARTERIAL ROAD INFORMATION SIGN
19-22	CROSS SECTIONS

IDOT HIGHWAY STANDARDS

SHEET	DESCRIPTION
000001-05	STANDARD SYMBOLS, ABBREVIATIONS, AND PATTERNS
001001-01	AREAS OF REINFORCEMENT BARS
001006	DECIMAL OF AN INCH AND OF A FOOT
664001-01	CHAIN LINK FENCE
701601-05	URBAN LANE CLOSURE, MULTILANE, 1W OR 2W WITH NONTRAVERSABLE MEDIAN
701701-05	URBAN LANE CLOSURE, MULTILANE INTERSECTION
701801-05	LANE CLOSURE, MULTILANE, 1W OR 2W, CROSSWALK OR SIDEWALK CLOSURE, for speeds < 45 mph
701901	TRAFFIC CONTROL DEVICES
720001	SIGN PANEL MOUNTING DETAILS
720006-01	SIGN PANEL ERECTION DETAILS
728001	TELESCOPING STEEL SIGN SUPPORT
731001	BASE FOR TELESCOPING STEEL SIGN SUPPORT

BOWMAN, BARRETT & ASSOCIATES INC
CONSULTING ENGINEERS
Chicago, Illinois
312.228.0100
www.bbainc.com

REVISIONS	
NAME	DATE

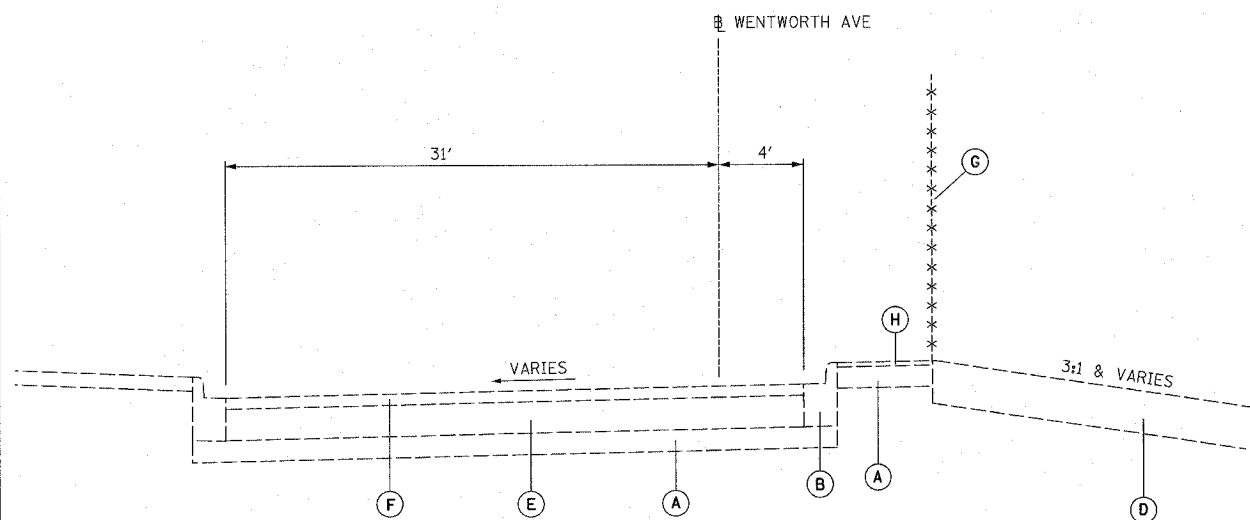
ILLINOIS DEPARTMENT OF TRANSPORTATION
F.A.I. 94/90 (DAN RYAN EXPRESSWAY)
SOUTHBOUND KNEE WALLS (35TH ST TO 33RD ST)
SUMMARY OF QUANTITIES
INDEX OF SHEETS
HIGHWAY STANDARDS
SCALE: NONE
DATE: 02/08/08
DRAWN BY: JDC
CHECKED BY: DDM

Rev. 6-4-08

Rev.

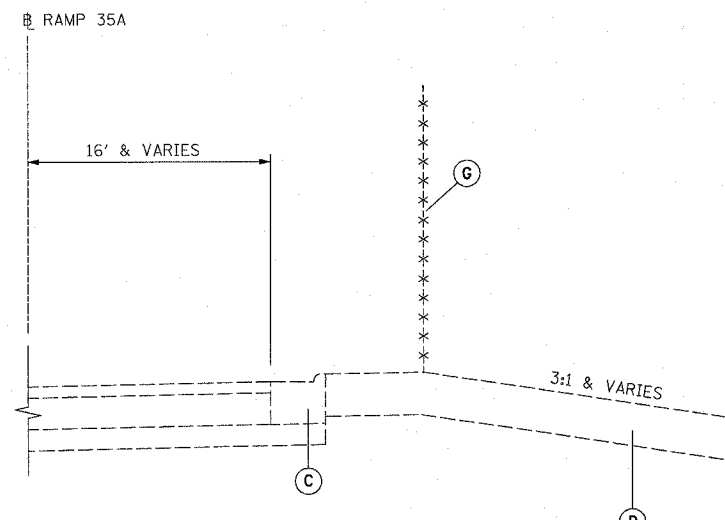
S00-1
3/12/2008

F.A.I.	SECTION	COUNTY	TOTAL SHEETS	SHEET NO.
94/90	*	COOK	22	4
STA.	TO STA.			
FED. ROAD DIST. NO.	ILLINOIS	FED. AID PROJECT		
62999	• 2324.6-1P-1-4			



EXISTING TYPICAL SECTION

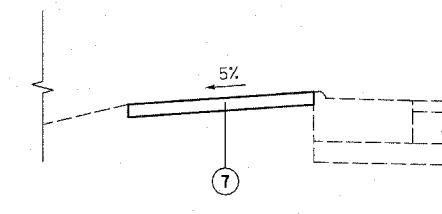
STA. 127+15 to 128+45



STA. 128+45 to 5007+24

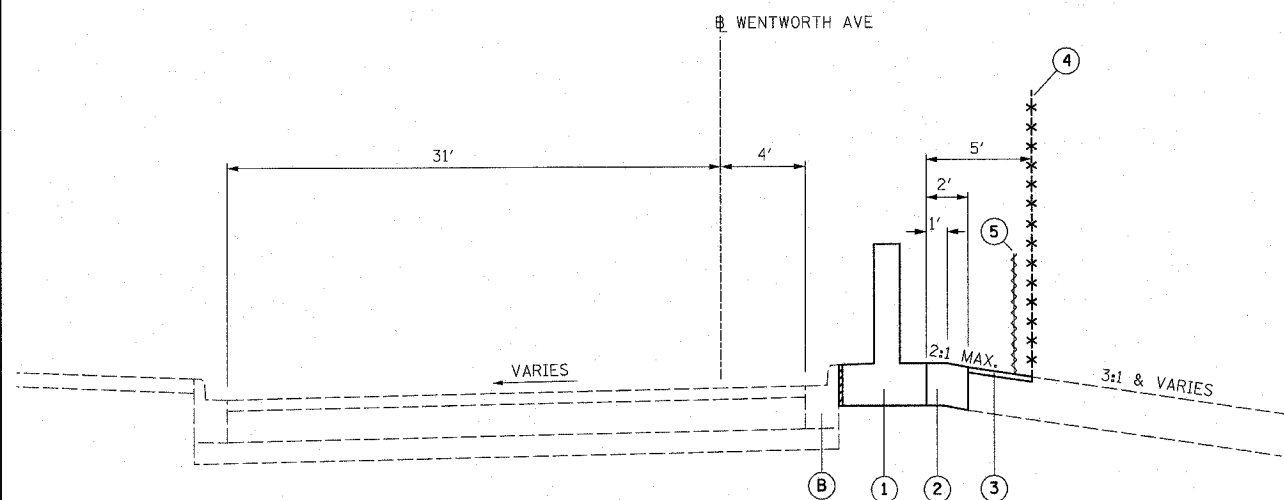
EXISTING LEGEND

- (A) GRANULAR MATERIAL, 6"
- (B) COMBINATION CONCRETE CURB AND GUTTER, TYPE B-6.12
- (C) COMBINATION CONCRETE CURB AND GUTTER, TYPE M-4.24
- (D) TOPSOIL, 12"
- (E) PORTLAND CEMENT CONCRETE PAVEMENT, 9"
- (F) BITUMINOUS CONCRETE, 3"
- (G) CHAIN LINK FENCE, 4'
- (H) BITUMINOUS MEDIAN SURFACE, 1/2"



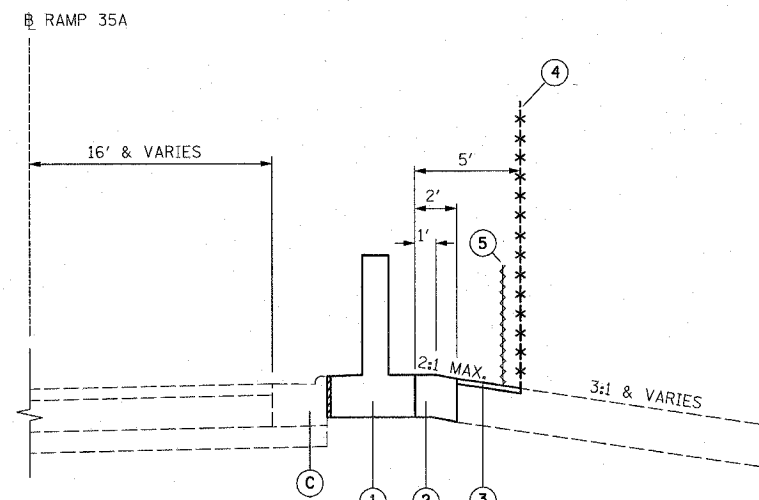
TYPICAL MEDIAN TREATMENT

STA. 5006+22 to 5006+81



PROPOSED TYPICAL SECTION

STA. 127+15 to 128+45



STA. 128+45 to 5007+24

PROPOSED LEGEND

- (1) FLUTED KNEE WALL
- (2) SEEDING, CLASS 2A / TOPSOIL FURNISH AND PLACE, 12" / EROSION CONTROL BLANKET
- (3) SEEDING, CLASS 2A / TOPSOIL FURNISH AND PLACE, 12" / EROSION CONTROL BLANKET
- (4) CHAIN LINK FENCE, 4' (SPECIAL)
- (5) SEDIMENT CONTROL, SILT FENCE (TO BE REMOVED AT PROJECT COMPLETION)

NOTES:

1. THICKNESS OF EXISTING PAVEMENT AND GRANULAR MATERIAL ARE TAKEN FROM RECORD DRAWING PLANS.
2. TYPICAL SECTIONS NEED TO BE VERIFIED WITH THE PLANS AS THEY ARE A REPRESENTATION OF THE PLANS. THEY DO NOT SHOW ALL CONFIGURATIONS, JUST THE MOST PREDOMINANT.

BOWMAN, BARRETT & ASSOCIATES INC.
CONSULTING ENGINEERS
Chicago, Illinois
312.228.0100
www.bbainc.com

REVISIONS	
NAME	DATE
REVISOR	3-6-08
REVISOR	5-30-08

ILLINOIS DEPARTMENT OF TRANSPORTATION
F.A.I. 94/90 (DAN RYAN EXPRESSWAY)
SOUTHBOUND KNEE WALLS (35TH ST TO 33RD ST)

TYPICAL SECTIONS

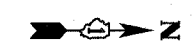
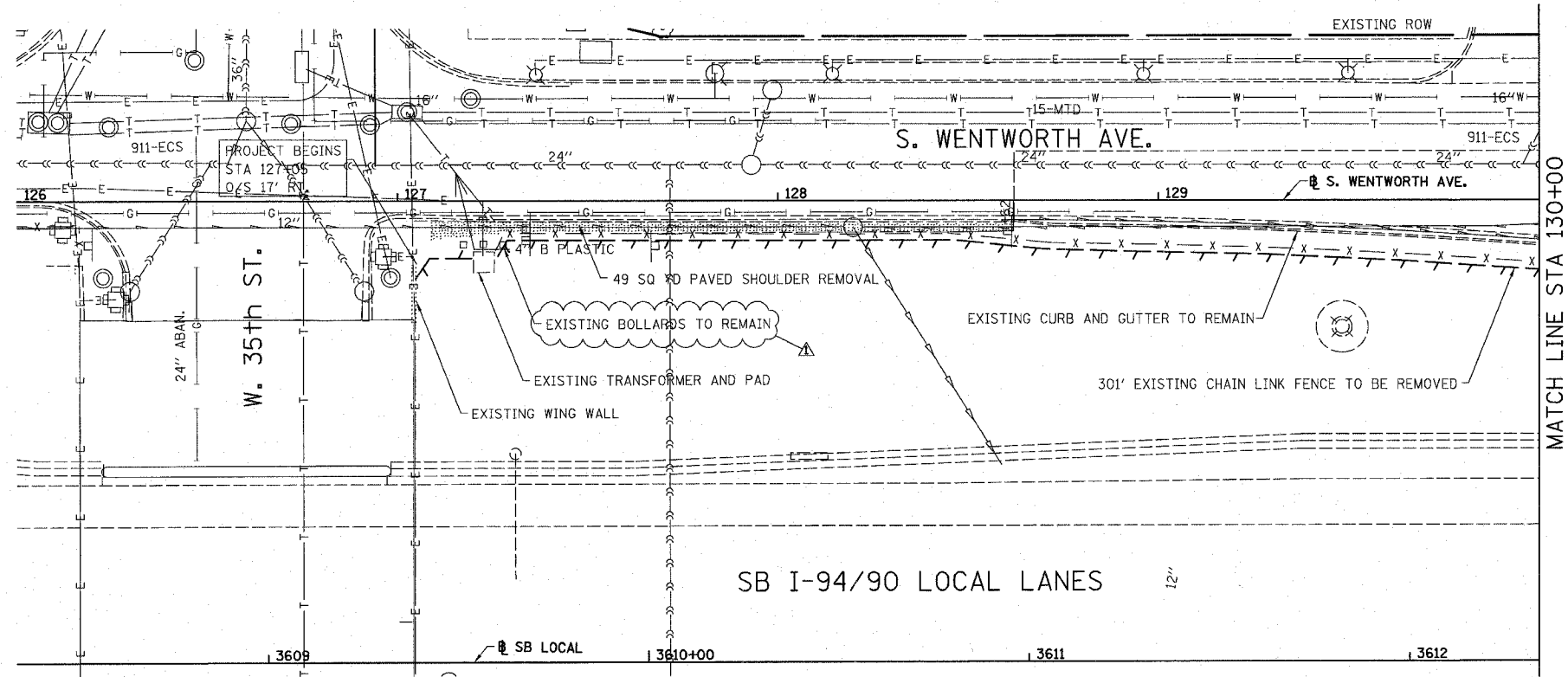
SCALE: NTS
DATE: 03/06/08


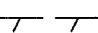
DRAWN BY: JDC
CHECKED BY: RS

TYP-1

5/29/2008

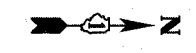
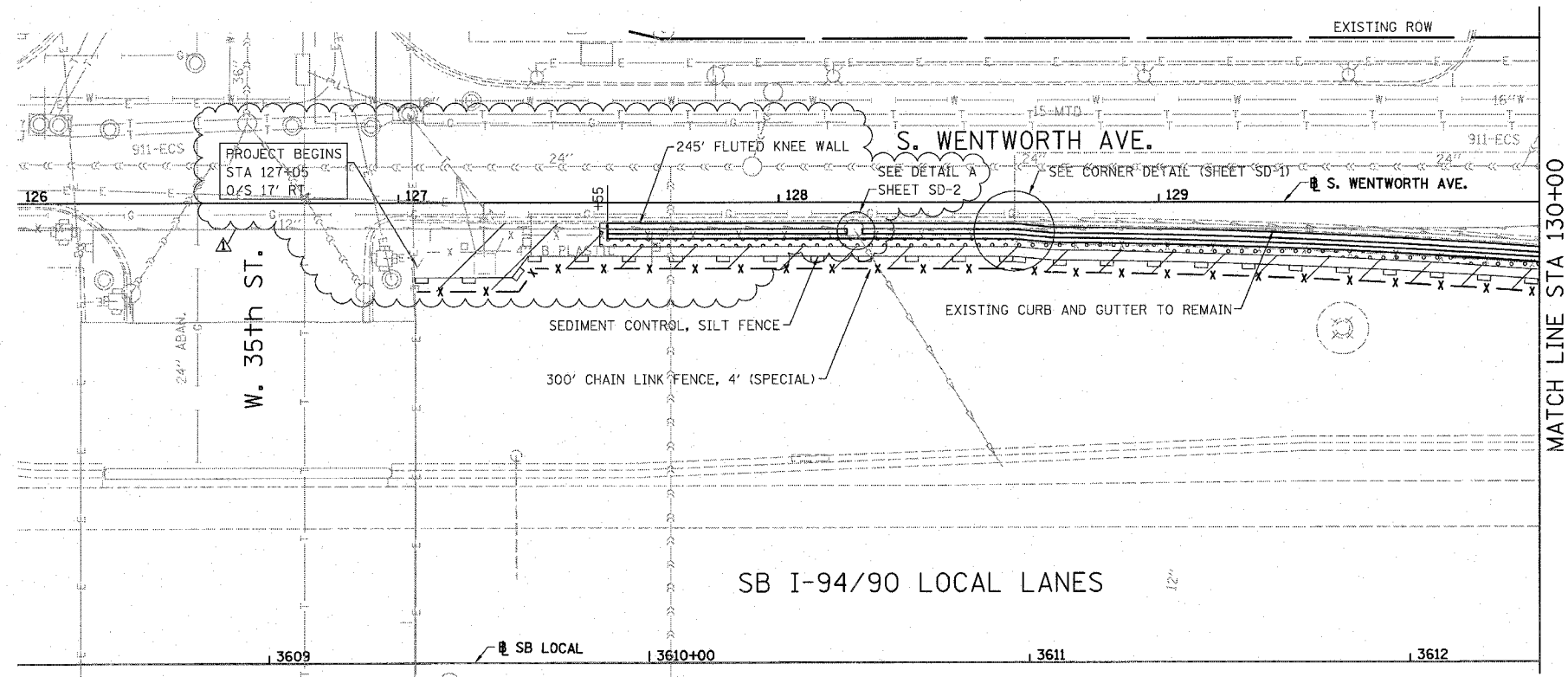
F.A.I.	SECTION	COUNTY	TOTAL SHEETS	SHEET NO.
94/90 *		COOK	22	10
STA.	TO STA.			
FED. ROAD DIST. NO.	ILLINOIS FED. AID PROJECT			
62999	• 2324.6-1P-1-4			

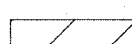



- LEGEND:**
-  PAVED SHOULDER REMOVAL
 -  LINEAR REMOVALS

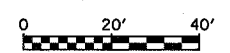
NOTE:
COST OF REMOVE BOLLARDS INCLUDED WITH EARTH EXCAVATION.

**EXISTING CONDITIONS AND REMOVAL
PROPOSED IMPROVEMENTS**



- LEGEND:**
-  SEEDING, CLASS 2A
EROSION CONTROL BLANKET
 -  TOPSOIL FURNISH AND PLACE, 12"
SEEDING, CLASS 2A
EROSION CONTROL BLANKET

- NOTES:**
1. SEE STRUCTURAL DETAIL FOR FLUTED KNEE WALL DETAILS.
 2. ALL POINT CALLOUTS ARE TAKEN AT THE EDGE OF THE KNEE WALL BASE.



PL-1

REVISIONS	
NAME	DATE
REVISOR	3-6-08
REVISOR	5-30-08

ILLINOIS DEPARTMENT OF TRANSPORTATION
F.A.I. 94/90 (DAN RYAN EXPRESSWAY)
SOUTHBOUND KNEE WALLS (35TH ST TO 33RD ST)

**EXISTING AND PROPOSED
KNEE WALL PLANS**

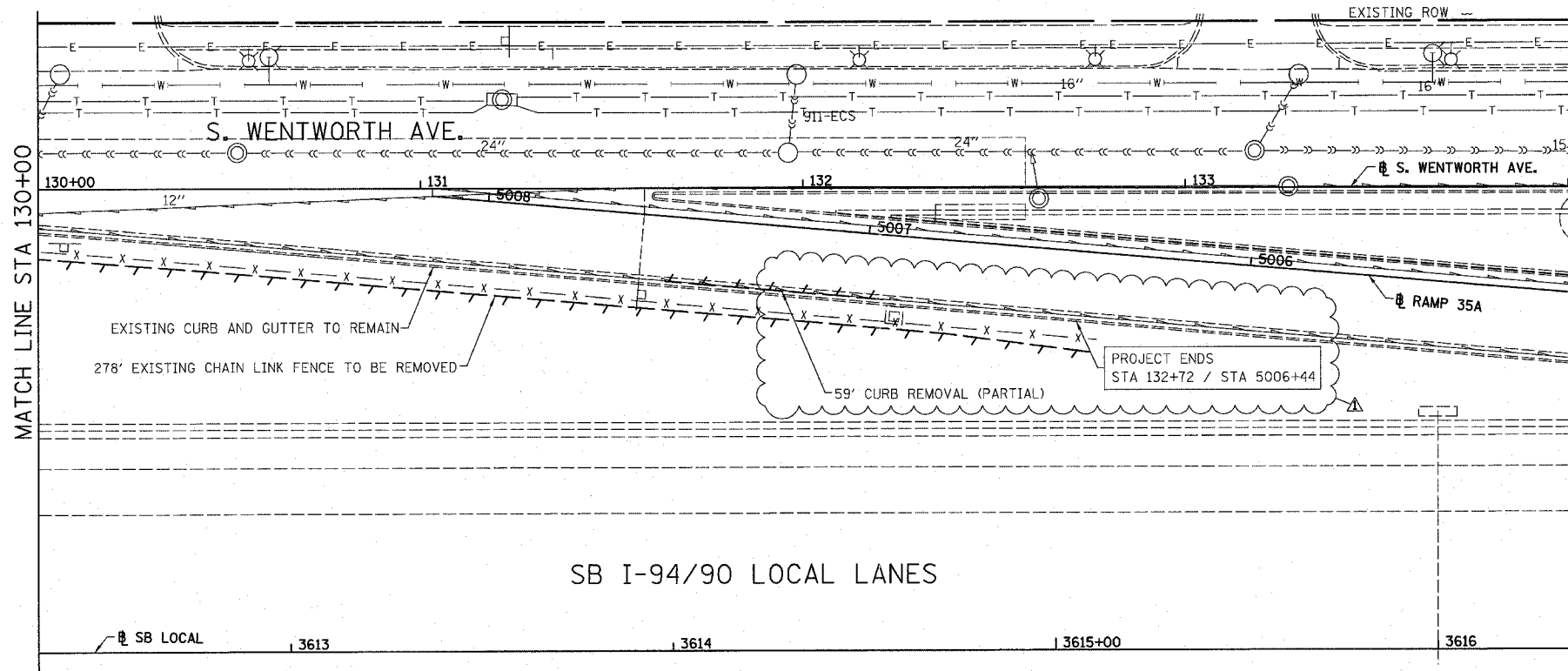
SCALE: 1"=20'
DATE: 03/06/08

DRAWN BY: JDC
CHECKED BY: DDM

BOWMAN, BARRETT & ASSOCIATES INC.
CONSULTING ENGINEERS
Chicago, Illinois
312.228.0100
www.bbandainc.com

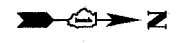
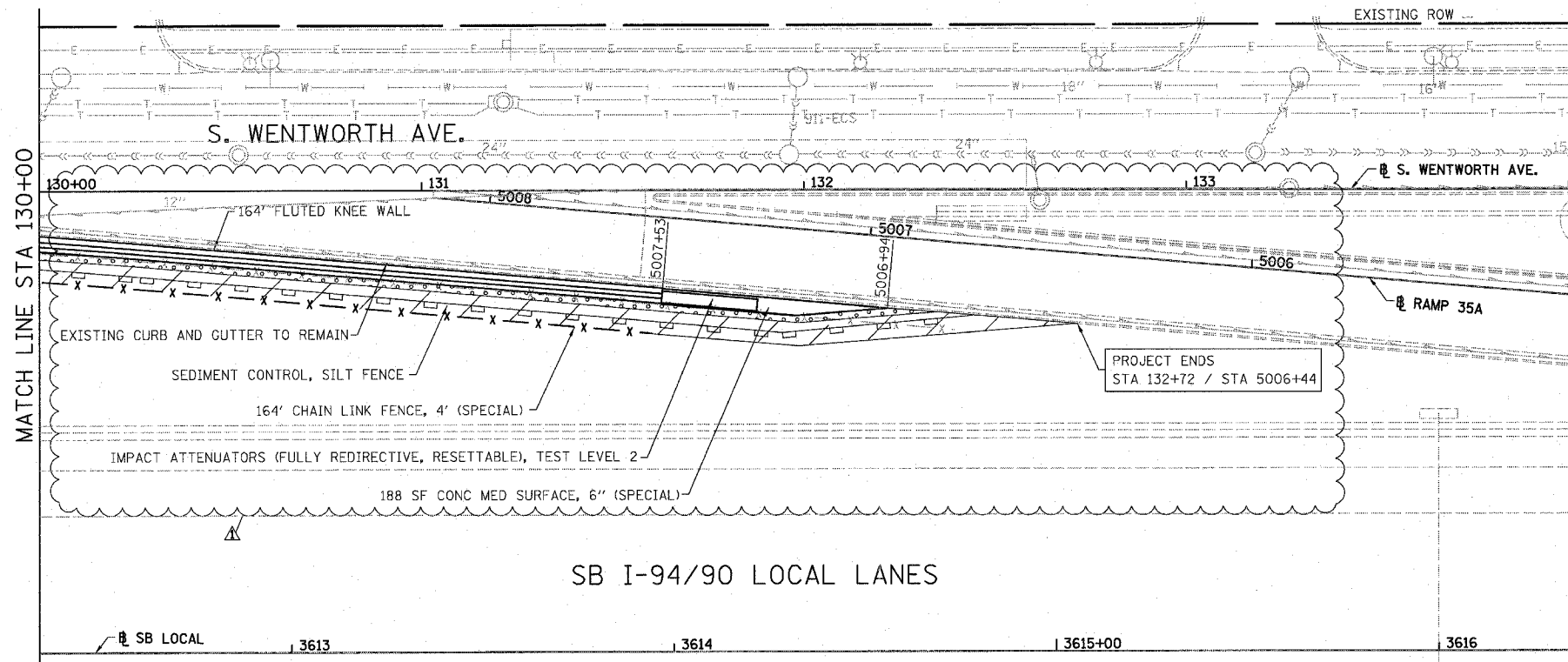
5/29/2008

F.A.I.	SECTION	COUNTY	TOTAL SHEETS	SHEET NO.
94/90		COOK	22	11
STA.	TO STA.			
FED. ROAD DIST. NO.	ILLINOIS	FED. AID PROJECT		
62999		2324.6-1P-1-4		



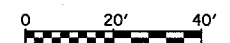
- LEGEND:
- PAVED SHOULDER REMOVAL
 - LINEAR REMOVALS

EXISTING CONDITIONS AND REMOVAL
PROPOSED IMPROVEMENTS



- LEGEND:
- SEEDING, CLASS 2A
EROSION CONTROL BLANKET
 - TOPSOIL FURNISH AND PLACE, 12"
SEEDING, CLASS 2A
EROSION CONTROL BLANKET

- NOTES:
1. SEE STRUCTURAL DETAIL FOR FLUTED KNEE WALL DETAILS.
 2. ALL POINT CALLOUTS ARE TAKEN AT THE EDGE OF THE KNEE WALL BASE.



PL-2

REVISIONS	
NAME	DATE
REVISED	3-6-08
REVISED	5-30-08

ILLINOIS DEPARTMENT OF TRANSPORTATION
F.A.I. 94/90 (DAN RYAN EXPRESSWAY)
SOUTHBOUND KNEE WALLS (35TH ST TO 33RD ST)

EXISTING AND PROPOSED
KNEE WALL PLANS

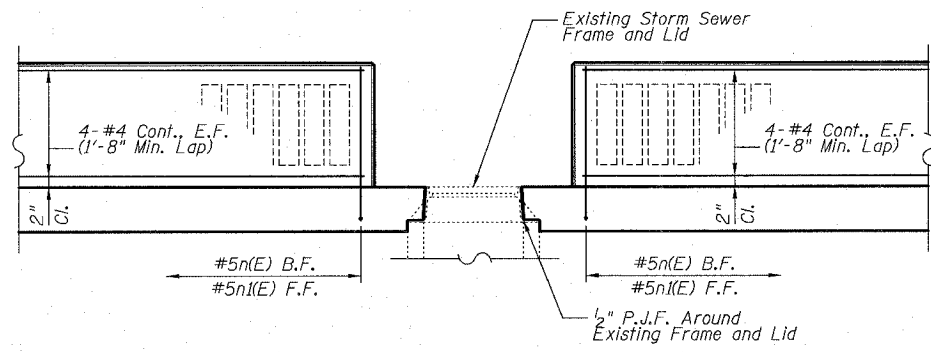
SCALE: 1"=20'
DATE: 03/06/08

DRAWN BY: JDC
CHECKED BY: DDM

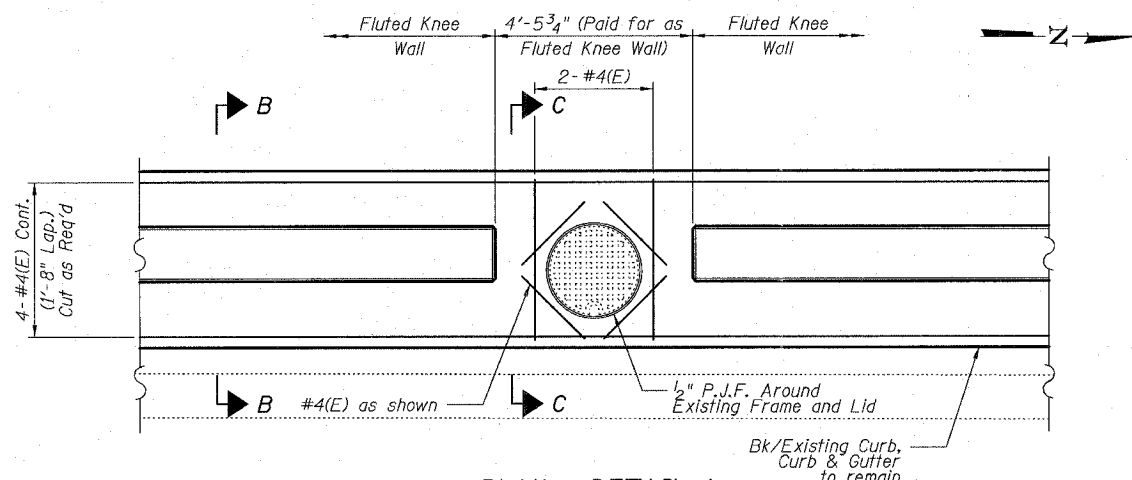
BOWMAN, BARRETT & ASSOCIATES INC.
CONSULTING ENGINEERS
Chicago, Illinois
312.228.0100
www.bbandainc.com

5/29/2008

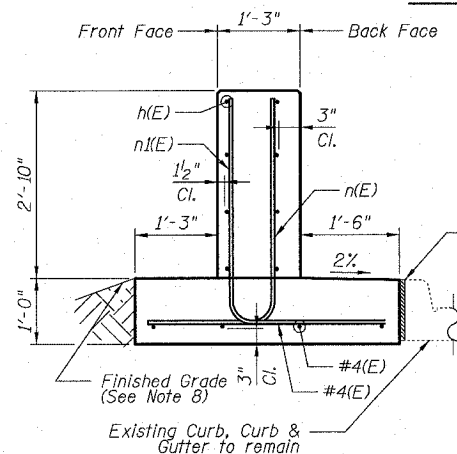
F.A.I.	SECTION	COUNTY	TOTAL SHEETS	SHEET NO.
94/90		COOK	22	13
STA.	TO STA.			
FED. ROAD DIST. NO.	ILLINOIS	FED. AID PROJECT		
62999				



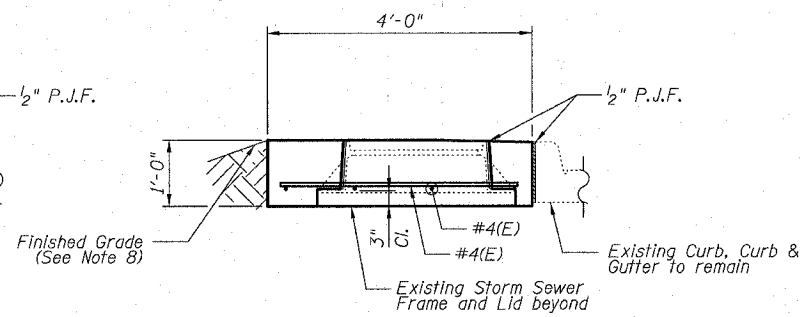
ELEVATION - DETAIL A



PLAN - DETAIL A



SECTION B-B



SECTION C-C

NOTES:

- All stations and offsets measured from S. Wentworth Ave. \square .
- Concrete: $f'c = 3500$ psi
- Provide California Finish on top of foundation between stem and Frontage Road. See Roadway Details
- At locations where Fluted Knee Wall abuts a rigid Structure, a 1" thick Preformed Expansion Joint Filler conforming to the shape of the Structure shall be installed between the Wall and the Structure.
- Apply Protective Coat to top and back face of stem and top of Frontage Road side of foundation.
- For Fluted Knee Wall standard details, see Sheet SD-1
- B.F. = Back Face
F.F. = Front Face
E.F. = Each Face
- Shape finished grade as required to match existing conditions.
- P.J.F. Included in cost of concrete structures.
- All items included in Detail A shall be included in the cost of Fluted Knee Wall.

BOWMAN, BARRETT & ASSOCIATES INC.
CONSULTING ENGINEERS
Chicago, Illinois
312.228.0100
www.bbainc.com

REVISIONS	
NAME	DATE
REVISED	3-6-08
ADDENDUM 1	5-30-08

ILLINOIS DEPARTMENT OF TRANSPORTATION
F.A.I. 94/90 (DAN RYAN EXPRESSWAY)
SOUTHBOUND KNEE WALLS (35TH ST TO 33RD ST)

SCALE: N.T.S.
DATE: 03/06/08

DRAWN BY: PAH
CHECKED BY: BLU

SHEET SD-2

DETAIL A

5/29/2008 6:21:45 PM