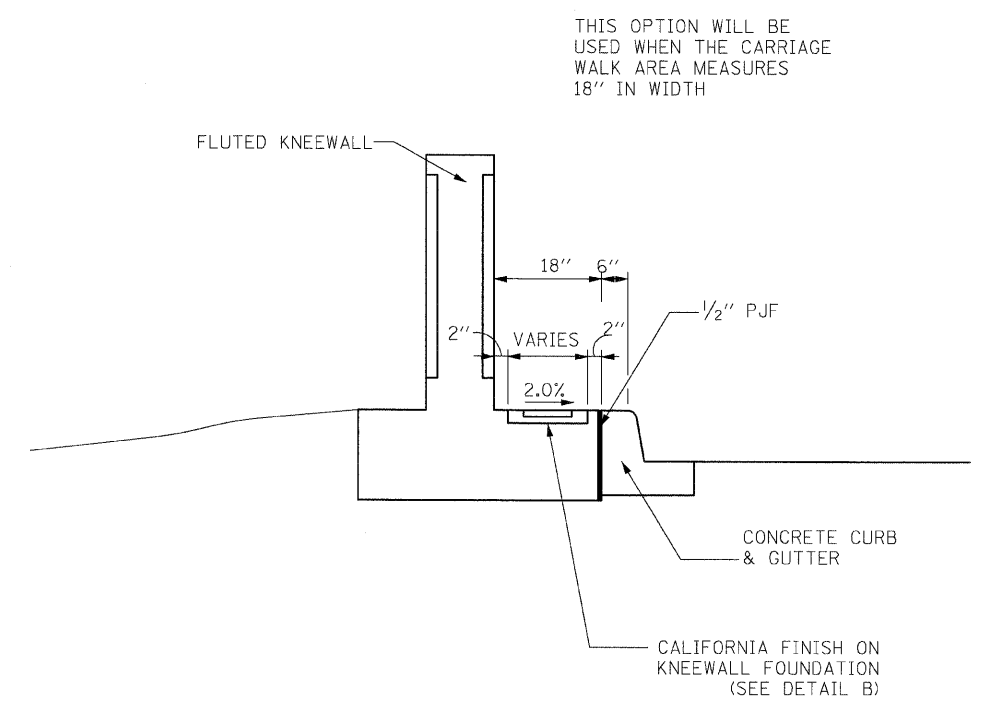
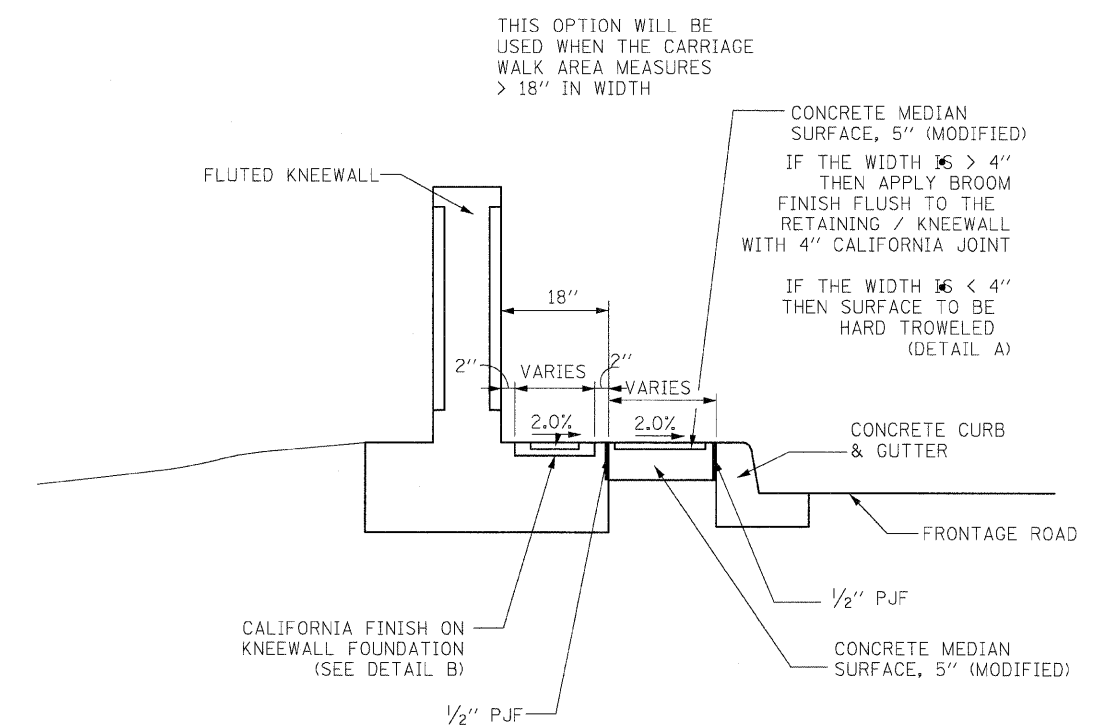


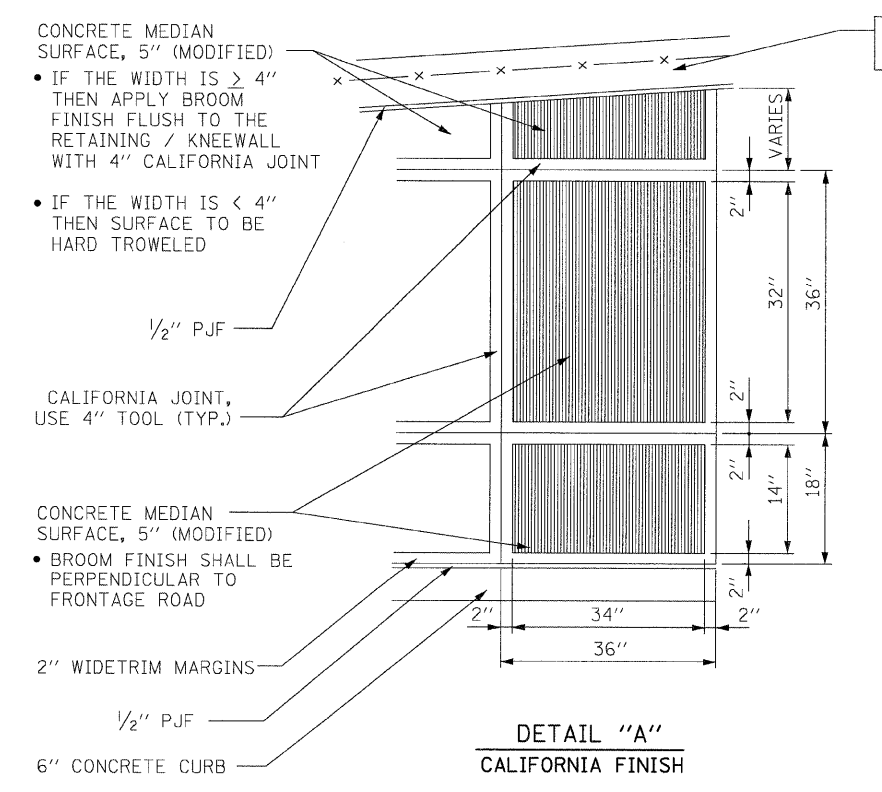
| | | | | |
|---------------------|---------------|------------------|--------------|-----------|
| F.A.I. | SECTION | COUNTY | TOTAL SHEETS | SHEET NO. |
| 94/90 | | COOK | 22 | 13A |
| STA. | TO STA. | | | |
| FED. ROAD DIST. NO. | ILLINOIS | FED. AID PROJECT | | |
| 62999 | 2324.6-1P-1-4 | | | |



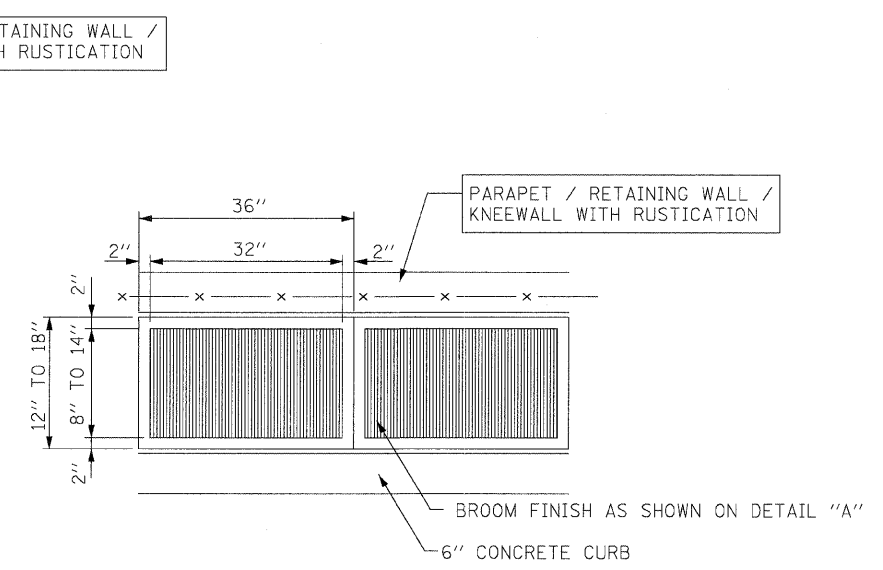
CARRIAGE WALK
WIDTH = 18"



CARRIAGE WALK
WIDTH > 18"



DETAIL "A"
CALIFORNIA FINISH



DETAIL "B"
CALIFORNIA FINISH

| REVISIONS | |
|-----------|--------|
| NAME | DATE |
| NEW SHEET | 3-6-08 |
| | |
| | |
| | |
| | |
| | |
| | |
| | |
| | |

ILLINOIS DEPARTMENT OF TRANSPORTATION
F.A.I. 94/90 (DAN RYAN EXPRESSWAY)
 GARFIELD BLVD TO 31ST STREET (NB LOCAL LANES)
 ROADWAY DETAILS
CONCRETE MEDIAN SURFACE 5" (MODIFIED) CALIFORNIA FINISH
 SCALE: NONE DRAWN BY: CTE
 DATE: 03/06/08 CHECKED BY: JDC

BOWMAN, BARRETT & ASSOCIATES INC.
 CONSULTING ENGINEERS
 Chicago, Illinois
 312.228.0100
 www.bbainc.com

RAGSDORF/AM/325/SHEET 13A/01/08