

STATE OF ILLINOIS  
DEPARTMENT OF TRANSPORTATION  
DIVISION OF HIGHWAYS

F. A. SHEET	SECTION	COUNTY	TOTAL SHEETS	SHEET NO.
	08-00146-00-TL	COOK	273	001
STA.	TO STA.		14 = 277	
FED. ROAD DIST. NO.	ILLINOIS	FED. AID PROJECT		

CONTRACT NO. 63003

INDEX OF SHEETS

- 1 COVER SHEET, INDEX OF SHEETS, STATE STANDARDS
- 2-11 LOCATION MAPS
- 13-18 SUMMARY OF QUANTITIES
- 19-84 CITY OF CALUMET CITY
- 85-98 VILLAGE OF CALUMET PARK
- 99-115 CITY OF CHICAGO HEIGHTS
- 116-123 CITY OF COUNTRY CLUB HILLS
- 124-135 VILLAGE OF GLENWOOD
- 136-146 VILLAGE OF HAZEL CREST
- 147-184 VILLAGE OF HOMEWOOD
- 185-192 VILLAGE OF LANSING
- 193-202 VILLAGE OF LYNWOOD
- 203-208 VILLAGE OF MIDLOTHIAN
- 209-215 CITY OF OAK FOREST
- 216-225 VILLAGE OF POSEN
- 226-231 VILLAGE OF RIVERDALE
- 232-241 VILLAGE OF SAUK VILLAGE
- 242-251 VILLAGE OF SOUTH CHICAGO HEIGHTS
- 252-257 VILLAGE OF STEGER
- 258-273 VILLAGE OF THORNTON
- 274-277 DISTRICT 1 DETAILS

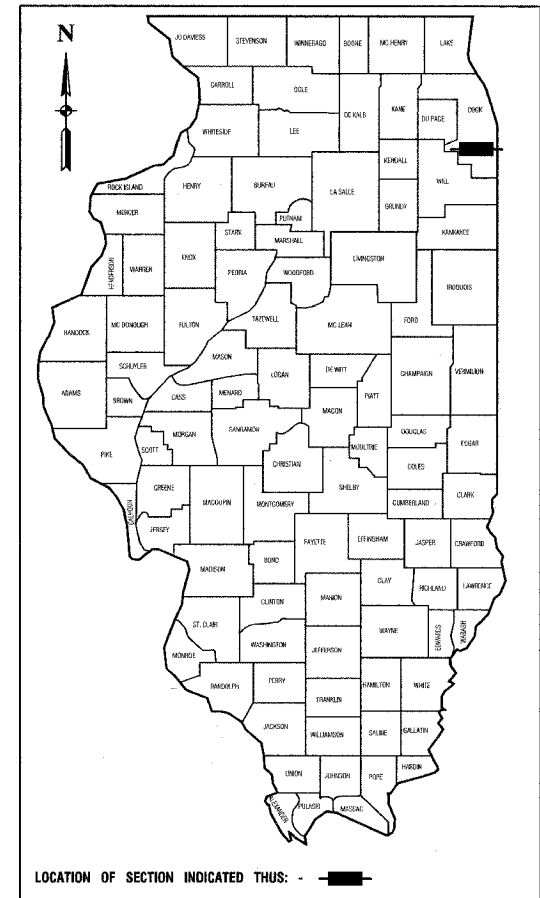
STATE STANDARDS

- 701301-02 LANE CLOSURE, 2L, 2W, SHORT TIME OPERATION
- 701701-05 URBAN LANE CLOSURE MULTILANE INTERSECTION
- 701901 TRAFFIC CONTROL DEVICES
- 857001 STANDARD PHASE DESIGNATION DIAGRAMS AND PHASE SEQUENCES
- 878001-06 CONCRETE FOUNDATION DETAILS
- 880006 TRAFFIC SIGNAL MOUNTING DETAILS

PLANS FOR PROPOSED  
FEDERAL AID HIGHWAY  
SOUTH SUBURBAN MAYORS AND MANAGERS ASSOCIATION  
TRAFFIC SIGNAL PRIORITY PREEMPTION IMPROVEMENTS

CITY OF CALUMET CITY, VILLAGE OF CALUMET PARK, CITY OF CHICAGO HEIGHTS,  
CITY OF COUNTRY CLUB HILLS, VILLAGE OF GLENWOOD, VILLAGE OF HAZEL CREST,  
VILLAGE OF HOMEWOOD, VILLAGE OF LANSING, VILLAGE OF LYNWOOD, VILLAGE OF MIDLOTHIAN,  
CITY OF OAK FOREST, VILLAGE OF POSEN, VILLAGE OF RIVERDALE, VILLAGE OF SAUK VILLAGE,  
VILLAGE OF SOUTH CHICAGO HEIGHTS, VILLAGE OF STEGER, VILLAGE OF THORNTON

PROJECT: M-8003 (867)  
SECTION NO.: 08-00146-00-TL  
C-91-022-08  
COOK COUNTY & WILL COUNTY



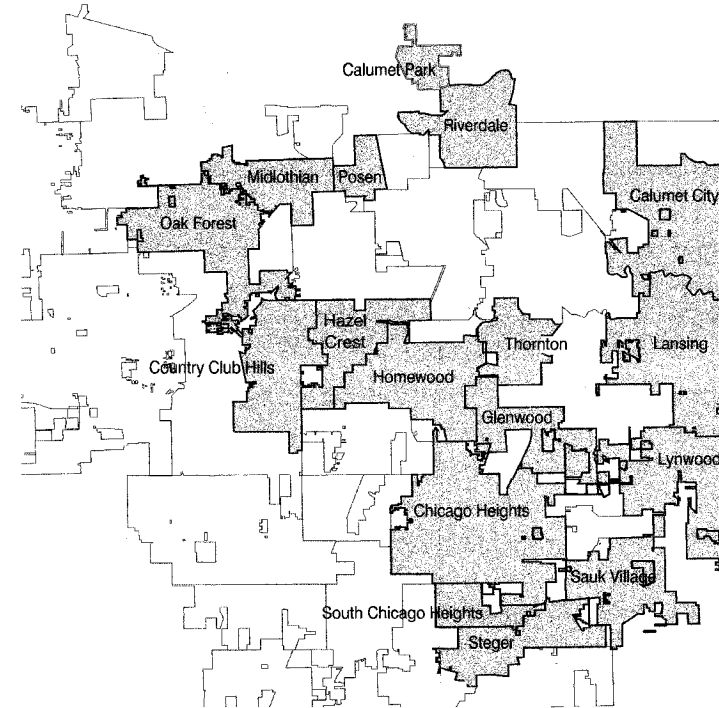
STATE OF ILLINOIS  
DEPARTMENT OF TRANSPORTATION  
DIVISION OF HIGHWAYS

APPROVED 02-05 2008  
*Michael J. ...* MAYOR, CITY OF CALUMET CITY

PASSED FEBRUARY 13 2007  
*Chandra S. ...* REGION ONE ENGINEER OF LOCAL ROADS & STREETS

RELEASED FOR  
LIMITED REVIEW FEBRUARY 14, 2008  
*Diana M. O'Keefe* DEPUTY DIRECTOR OF HIGHWAYS, REGION ONE ENGINEER

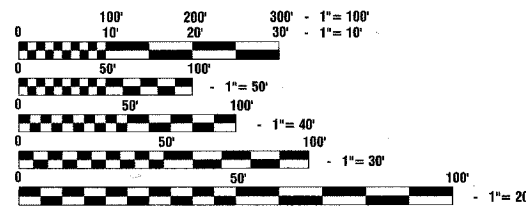
PRINTED BY THE AUTHORITY OF  
THE STATE OF ILLINOIS



LOCATION MAP

NO SCALE

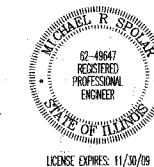
LENGTH OF PROJECT - 130 INTERSECTIONS



FULL SIZE PLANS HAVE BEEN PREPARED USING STANDARD  
ENGINEERING SCALES, REDUCED SIZED PLANS WILL NOT  
CONFORM TO STANDARD SCALES, IN MAKING MEASUREMENTS  
ON REDUCED PLANS, THE ABOVE SCALES MAY BE USED.

J. U. L. I. E.  
JOINT UTILITY LOCATION INFORMATION FOR EXCAVATION  
1 - 800 - 892 - 0123

CONTRACT NO. 63003



*Michael J. ...*  
1-31-08

SHEETS 1-115, 124-135, 147-208,  
216-241, 258-273



*Louis D. Hausmann*  
10-31-08

SHEETS 116-123, 209-215



*Chandra S. ...*  
02/01/2008

SHEETS 136-146



*Matthew Horn*  
02/06/08

SHEETS 242-257

I.D.O.T. FEDERAL AID DESIGN ENGINEER: (847) 705-4189  
CONSULTANTS: ROBINSON ENGINEERING, L.T.D. 708-331-6700