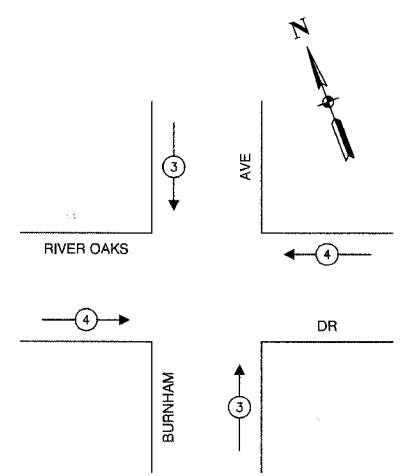
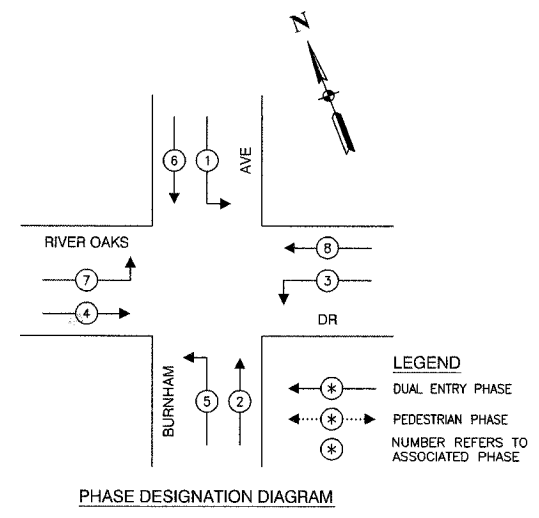
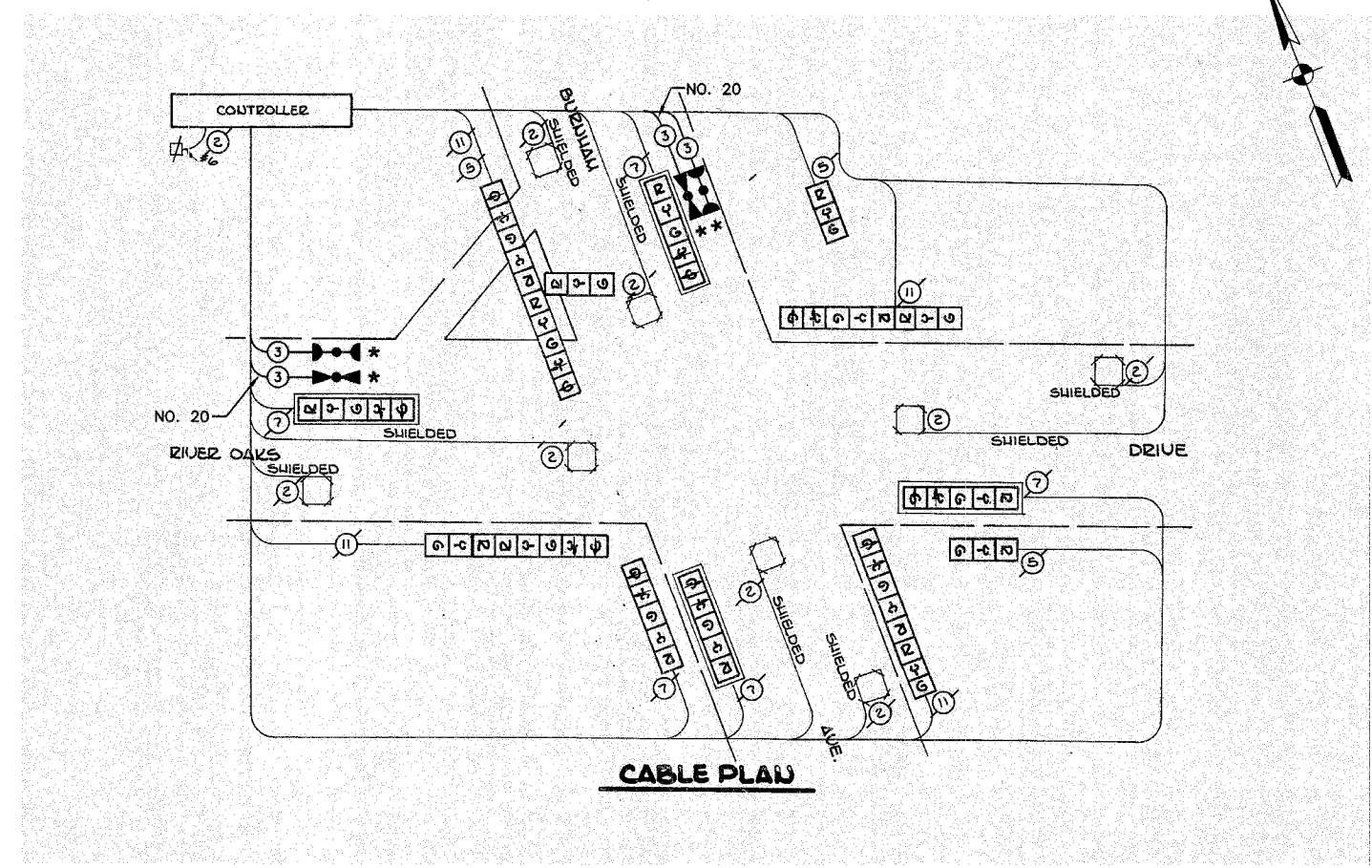


F. A. SHEET	SECTION	COUNTY	TOTAL SHEETS	SHEET NO.
	08-00146-00-TL	COOK	273	032
STA.	TO STA.			
FED. ROAD DIST. NO.	ELONG	FED. AID PROJECT		

CONTRACT NO. 63003



PROPOSED EMERGENCY VEHICLE PREEMPTORS		
EMERGENCY VEHICLE PREEMPTOR	3	4
MOVEMENT	↑ ↓	→ ←



CABLE PLAN LEGEND

EXISTING	PROPOSED	DESCRIPTION
⊖	⊖	8" TRAFFIC SIGNAL SECTION
⊖	⊖	12" TRAFFIC SIGNAL SECTION
⊖	⊖	12" PEDESTRIAN SIGNAL SECTION
⊖	⊖	12" PEDESTRIAN SIGNAL SECTION
⊖	⊖	CONTROLLER CABINET
⊖	⊖	SERVICE INSTALLATION
⊖	⊖	TELEPHONE CONNECTION
⊖	⊖	MAGNETIC DETECTOR
⊖	⊖	EMERGENCY VEHICLE LIGHT DETECTOR
⊖	⊖	CONFIRMATION BEACON
⊖	⊖	PUSHBUTTON DETECTOR
⊖	⊖	VEHICLE DETECTOR, INDUCTION LOOP
⊖	⊖	2 DENOTES NUMBER OF CONDUCTORS. ALL CABLE NO. 14 EXCEPT AS INDICATED. ALL LOOP DETECTOR CABLE TO BE SHIELDED.
⊖	⊖	SIGNAL FACE WITH BACKPLATE "P" INDICATES PROGRAMMED HEAD
⊖	⊖	RAILROAD CONTROL CABINET
⊖	⊖	ILLUMINATED SIGN, FIBER OPTIC "NO LEFT TURN"
⊖	⊖	ILLUMINATED SIGN, FIBER OPTIC "NO RIGHT TURN"
H/C	H/C	GROUND ROD AT HANDHOLE, DOUBLE HANDHOLE, OR CONTROLLER
P	P	GROUND ROD AT POST OR MAST ARM POLE
S	S	GROUND ROD AT ELECTRIC SERVICE INSTALLATION

SCHEDULE OF QUANTITIES

PAY ITEM	UNIT	QUANTITY
MAINTENANCE OF EXISTING TRAFFIC SIGNAL INSTALLATION	EACH	1
ELECTRIC CABLE IN CONDUIT, SIGNAL NO. 14 3C	FOOT	316
LIGHT DETECTOR	EACH	2
LIGHT DETECTOR AMPLIFIER	EACH	1
ELECTRIC CABLE IN CONDUIT NO. 20 3/C, TWISTED, SHIELDED	FOOT	316

NOTE
 * 1. THIS PLAN IS FOR THE PURPOSE OF INSTALLING EMERGENCY VEHICLE PREEMPTION EQUIPMENT AS SHOWN PER PLAN INDICATED IN THE SCHEDULE OF QUANTITIES. ALL OTHER EQUIPMENT SHOWN SHALL BE DISREGARDED.

* PLANS MODIFIED BY ROBINSON ENGINEERING, LTD

REVISIONS	
NAME	DATE
ADDED EV PREEMPTION	01/02/08

**CITY OF CALUMET CITY
LOCATION NO. 7**

ILLINOIS DEPARTMENT OF TRANSPORTATION

**PROPOSED EMERGENCY VEHICLE PREEMPTION
CABLE PLAN, PHASE DESIGNATION DIAGRAM &
SCHEDULE OF QUANTITIES
BURNHAM AVENUE & RIVER OAKS DRIVE**

SCALE: VERT. _____
 HORIZ. _____
 DATE _____

DRAWN BY _____
 CHECKED BY _____