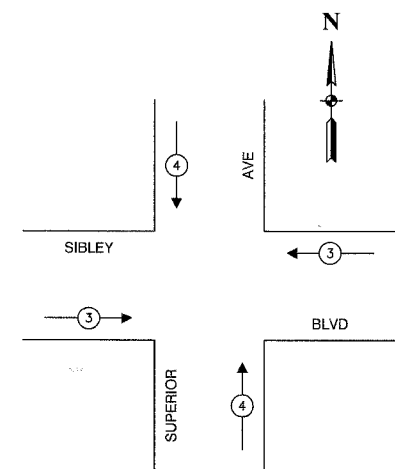
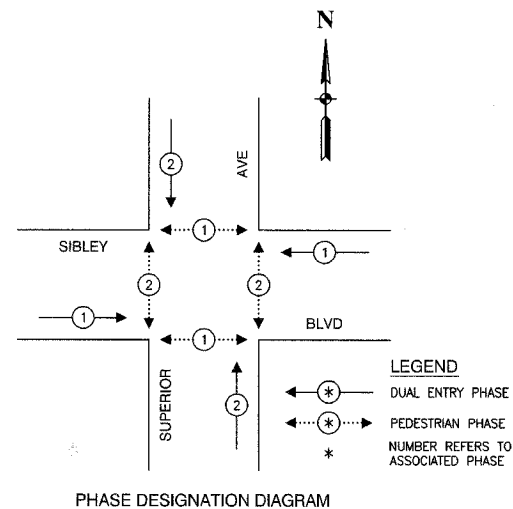


F. A. NO.	SECTION	COUNTY	TOTAL SHEETS	SHEET NO.
	08-00146-00-TL	COOK	273	062
STA.	TO STA.			
FED. ROAD DIST. NO.	LANDS	FED. AID PROJECT		

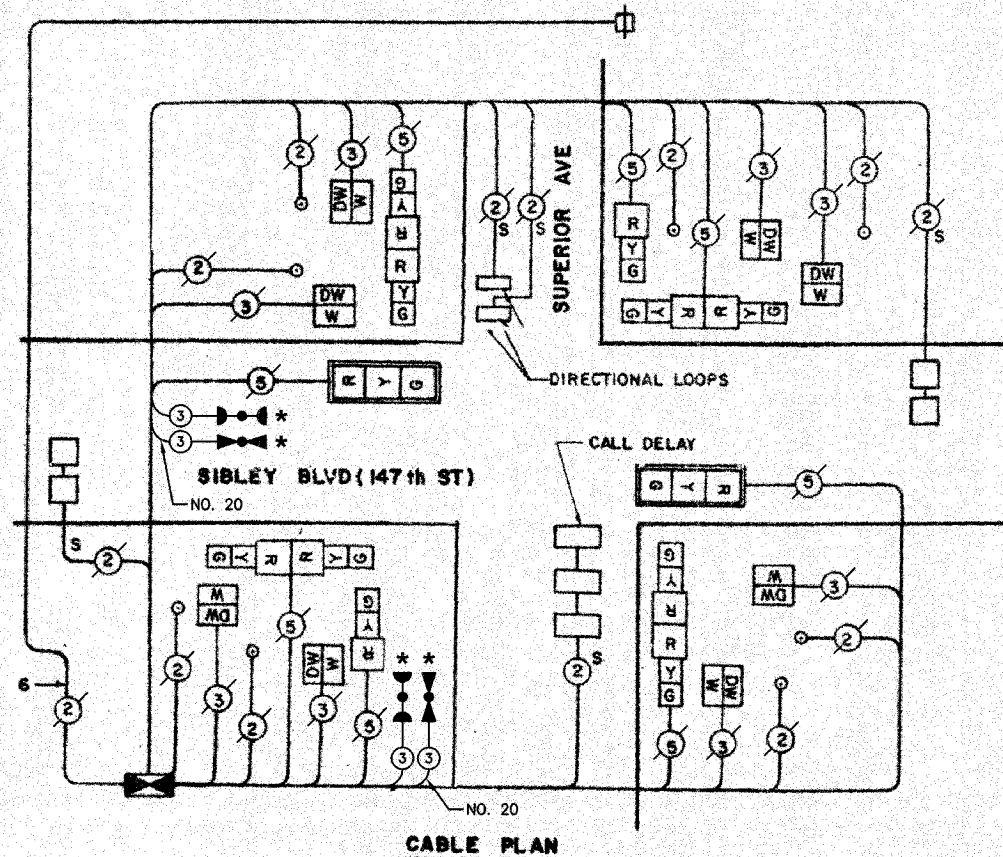
CONTRACT NO. 63003



EMERGENCY VEHICLE PREEMPTION SEQUENCE

PROPOSED EMERGENCY VEHICLE PREEMPTORS		
EMERGENCY VEHICLE PREEMPTOR	3	4
MOVEMENT	←	↑

SCHEDULE OF QUANTITIES		
PAY ITEM	UNIT	QUANTITY
MAINTENANCE OF EXISTING TRAFFIC SIGNAL INSTALLATION	EACH	1
FULL-ACTUATED CONTROLLER AND TYPE IV CABINET, SPECIAL	EACH	1
ELECTRIC CABLE IN CONDUIT, SIGNAL NO. 14 3C	FOOT	177
TRAFFIC SIGNAL POST, GALVANIZED STEEL 18 FT.	EACH	1
INDUCTIVE LOOP DETECTOR	EACH	5
LIGHT DETECTOR	EACH	2
LIGHT DETECTOR AMPLIFIER	EACH	1
RELOCATE EXISTING SIGNAL HEAD	EACH	1
RELOCATE EXISTING PEDESTRIAN SIGNAL HEAD	EACH	1
RELOCATE EXISTING PEDESTRIAN PUSH-BUTTON	EACH	1
REMOVE AND REINSTALL ELECTRIC CABLE FROM CONDUIT	FOOT	15
REMOVE EXISTING TRAFFIC SIGNAL EQUIPMENT	EACH	1
ELECTRIC CABLE IN CONDUIT NO. 20 3/C, TWISTED, SHIELDED	FOOT	177
MODIFY EXISTING TYPE "D" FOUNDATION	EACH	1



CABLE PLAN

SEQUENCE OF OPERATIONS

MOVEMENT	P				P				F L A S H
	↓	↑	←	→	↓	↑	←	→	
PHASE	A				B				
INTERVAL	1	2	3A	3B	4	5	6A	6B	
CHANGE TO	/		B		/		A		H
SIBLEY BLVD(147th ST) SIGNALS	G	G	Y	R	R	R	R	R	R
SUPERIOR AVE SIGNALS	R	R	R	R	G	G	Y	R	R
PED SIGNALS X-ING SUPERIOR AVE	*	FL**	DW	DW	DW	DW	DW	DW	DARK
PED SIGNALS X-ING SIBLEY BLVD(147th ST)	DW	DW	DW	DW	*	FL**	DW	DW	DARK

* TO APPEAR ONLY UPON PUSHBUTTON ACTUATION
 ** FLASHING "DON'T WALK" IS TO TERMINATE AT THE COMPLETION OF PEDESTRIAN INTERVAL C1

EXISTING	PROPOSED	
⊙	G	8" TRAFFIC SIGNAL SECTION
⊙	R	12" TRAFFIC SIGNAL SECTION
⊙	W	12" PEDESTRIAN SIGNAL SECTION
⊙	⊕	12" PEDESTRIAN SIGNAL SECTION
⊕	⊕	CONTROLLER CABINET
⊕	⊕	SERVICE INSTALLATION
⊕	⊕	TELEPHONE CONNECTION
⊕	⊕	MAGNETIC DETECTOR
⊕	⊕	EMERGENCY VEHICLE LIGHT DETECTOR
⊕	⊕	CONFIRMATION BEACON
⊕	⊕	PUSHBUTTON DETECTOR
⊕	⊕	VEHICLE DETECTOR, INDUCTION LOOP
⊕	⊕	2 DENOTES NUMBER OF CONDUCTORS. ALL CABLE NO. 14 EXCEPT AS INDICATED. ALL LOOP DETECTOR CABLE TO BE SHIELDED.
⊕	⊕	SIGNAL FACE WITH BACKPLATE
⊕	⊕	"P" INDICATES PROGRAMMED HEAD
"E" ⊕	⊕	RAILROAD CONTROL CABINET
"E" ⊕	⊕	ILLUMINATED SIGN, FIBER OPTIC "NO LEFT TURN"
"E" ⊕	⊕	ILLUMINATED SIGN, FIBER OPTIC "NO RIGHT TURN"
H/C ⊕	⊕	GROUND ROD AT HANDHOLE, DOUBLE HANDHOLE, OR CONTROLLER
P ⊕	⊕	GROUND ROD AT POST OR MAST ARM POLE
S ⊕	⊕	GROUND ROD AT ELECTRIC SERVICE INSTALLATION

NOTE

* 1. THIS PLAN IS FOR THE PURPOSE OF INSTALLING EMERGENCY VEHICLE PREEMPTION EQUIPMENT AS SHOWN PER PLAN INDICATED IN THE SCHEDULE OF QUANTITIES. ALL OTHER EQUIPMENT SHOWN SHALL BE DISREGARDED.

CITY OF CALUMET CITY
 LOCATION NO. 22

* PLANS MODIFIED BY
 ROBINSON ENGINEERING, LTD

REVISIONS	
NAME	DATE
* ADDED EV PREEMPTION	01/02/08
NEW 18" POST	
NEW CONTROLLER	

ILLINOIS DEPARTMENT OF TRANSPORTATION

PROPOSED EMERGENCY VEHICLE PREEMPTION
 CABLE PLAN, PHASE DESIGNATION DIAGRAM &
 SCHEDULE OF QUANTITIES
 SIBLEY BOULEVARD & SUPERIOR AVENUE

SCALE: VERT. _____
 HORIZ. _____
 DATE _____ DRAWN BY _____
 CHECKED BY _____

ROBINSON ENGINEERING, LTD.
 17200 SOUTH PARK AVENUE, SOUTH HOLLAND, ILLINOIS 60478
 (708) 581-6100 FAX (708) 581-0208
 ILLINOIS DESIGN FIRM REGISTRATION NO. 116057120