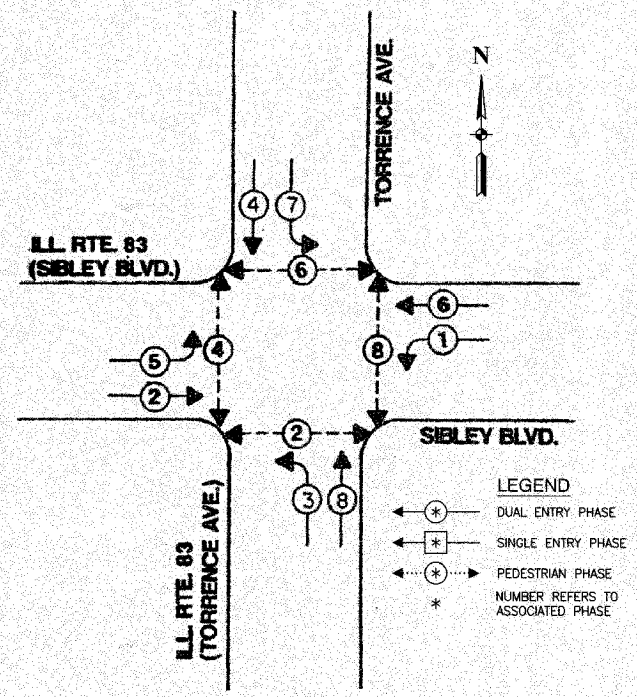


P.A. SHEET	SECTION	COUNTY	TOTAL SHEETS	SHEET NO.
	08-00146-00-TL	COOK	273	064
STA.	TO STA.			
FED. ROAD DIST. NO.	PLAN NO.	FED. AID PROJECT		

CONTRACT NO. 63003

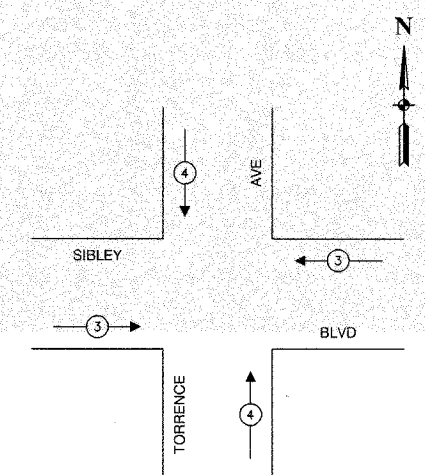
CABLE PLAN LEGEND

- | | | |
|-----------------|-----------------|---|
| EXISTING | PROPOSED | |
| | | 8" TRAFFIC SIGNAL SECTION |
| | | 12" TRAFFIC SIGNAL SECTION |
| | | 12" PEDESTRIAN SIGNAL SECTION |
| | | CONTROLLER CABINET |
| | | SERVICE INSTALLATION |
| | | TELEPHONE CONNECTION |
| | | MAGNETIC DETECTOR |
| | | EMERGENCY VEHICLE LIGHT DETECTOR |
| | | CONFIRMATION BEACON |
| | | PUSHBUTTON DETECTOR |
| | | VEHICLE DETECTOR, INDUCTION LOOP |
| | | DENOTES NUMBER OF CONDUCTORS. ALL CABLE NO. 14 EXCEPT AS INDICATED. ALL LOOP DETECTOR CABLE TO BE SHIELDED. |
| | | SIGNAL FACE WITH BACKPLATE |
| | | "P" INDICATES PROGRAMMED HEAD |
| | | RAILROAD CONTROL CABINET |
| | | ILLUMINATED SIGN, FIBER OPTIC "NO LEFT TURN" |
| | | ILLUMINATED SIGN, FIBER OPTIC "NO RIGHT TURN" |
| | | GROUND ROD AT HANDHOLE, DOUBLE HANDHOLE, OR CONTROLLER |
| | | GROUND ROD AT POST OR MAST ARM POLE |
| | | GROUND ROD AT ELECTRIC SERVICE INSTALLATION |



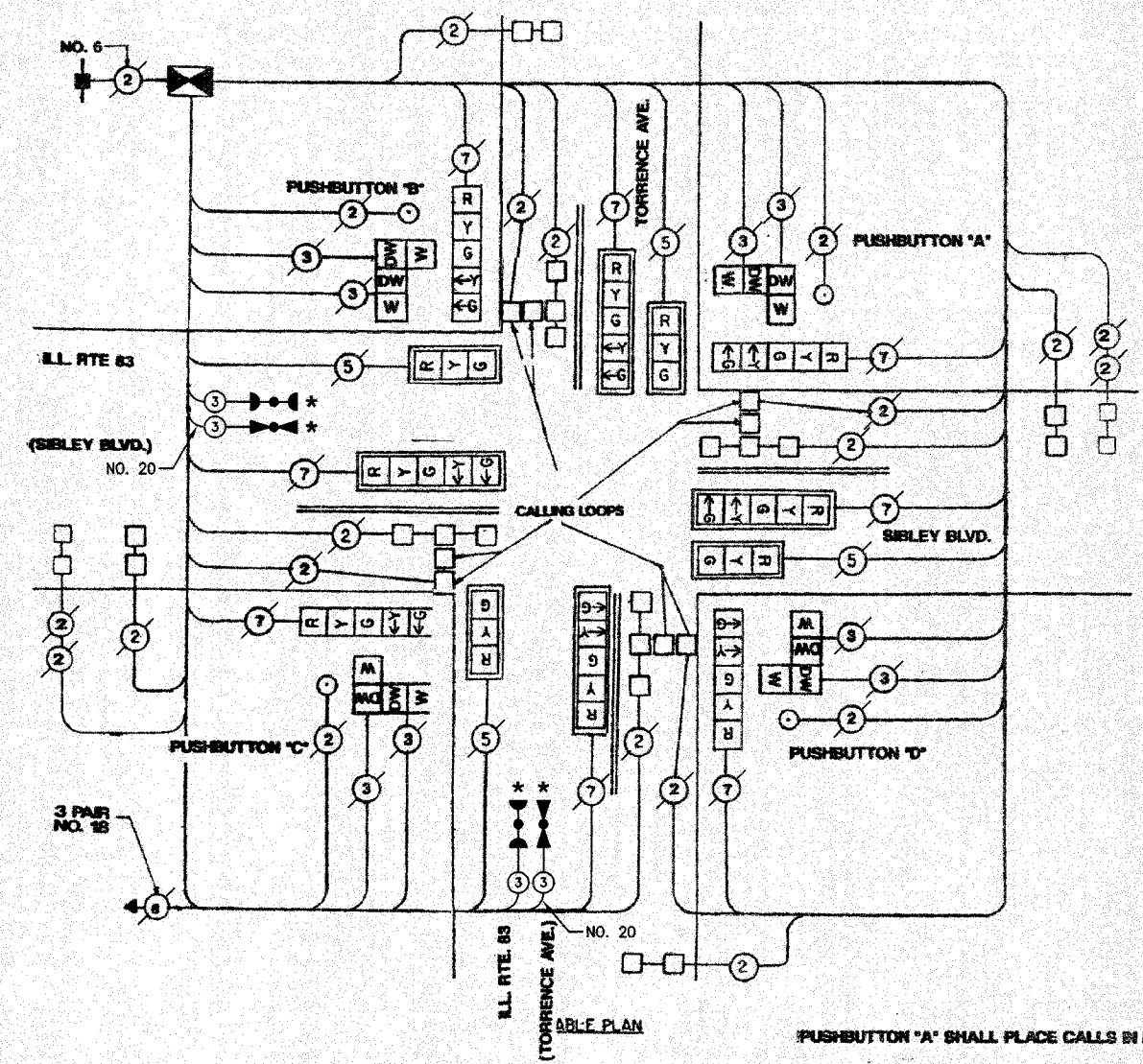
PHASE DESIGNATION DIAGRAM

- LEGEND**
- DUAL ENTRY PHASE
 - SINGLE ENTRY PHASE
 - PEDESTRIAN PHASE
 - NUMBER REFERS TO ASSOCIATED PHASE



EMERGENCY VEHICLE PREEMPTION SEQUENCE

PROPOSED EMERGENCY VEHICLE PREEMPTORS		
EMERGENCY VEHICLE PREEMPTOR	3	4
MOVEMENT		



- PUSHBUTTON "A" SHALL PLACE CALLS IN PHASES 6 + 8
- PUSHBUTTON "B" SHALL PLACE CALLS IN PHASES 4 + 6
- PUSHBUTTON "C" SHALL PLACE CALLS IN PHASES 2 + 4
- PUSHBUTTON "D" SHALL PLACE CALLS IN PHASES 2 + 8

SCHEDULE OF QUANTITIES		
PAY ITEM	UNIT	QUANTITY
MAINTENANCE OF EXISTING TRAFFIC SIGNAL INSTALLATION	EACH	1
ELECTRIC CABLE IN CONDUIT, SIGNAL NO. 14 3C	FOOT	324
LIGHT DETECTOR	EACH	2
LIGHT DETECTOR AMPLIFIER	EACH	1
ELECTRIC CABLE IN CONDUIT NO. 20 3/C, TWISTED, SHIELDED	FOOT	324

NOTE

* 1. THIS PLAN IS FOR THE PURPOSE OF INSTALLING EMERGENCY VEHICLE PREEMPTION EQUIPMENT AS SHOWN PER PLAN INDICATED IN THE SCHEDULE OF QUANTITIES. ALL OTHER EQUIPMENT SHOWN SHALL BE DISREGARDED.

* PLANS MODIFIED BY ROBINSON ENGINEERING, LTD

REVISIONS	
NAME	DATE
ADDED EV PREEMPTION	01/02/08

CITY OF CALUMET CITY LOCATION NO. 23

ILLINOIS DEPARTMENT OF TRANSPORTATION

PROPOSED EMERGENCY VEHICLE PREEMPTION CABLE PLAN, PHASE DESIGNATION DIAGRAM & SCHEDULE OF QUANTITIES SIBLEY BOULEVARD & TORRENCE AVENUE

SCALE: VERT. _____ DRAWN BY _____
 HORIZ. _____ CHECKED BY _____
 DATE _____

ROBINSON ENGINEERING, LTD.
 1700 SOUTH PARK AVENUE SOUTH HOLLAND, ILLINOIS 60473
 (708) 331-8100 FAX (708) 331-3600
 ILLINOIS DESIGN FIRM REGISTRATION NO. 0411128