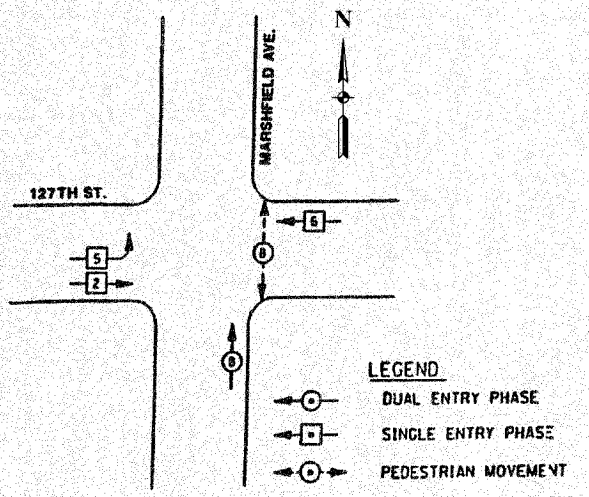


SECTION	COUNTY	TOTAL SHEETS	SHEET NO.
08-00146-00-TL	COOK	273	090
STA.	TO STA.		
FED. ROAD DIST. NO.	KLINGS	FED. AID PROJECT	

CONTRACT NO. 63003

CONTROLLER SEQUENCE IV (FOR THE CROSS STREET ONLY)

REFERRING TO STANDARD 2393 (FOR THE CROSS STREET ONLY), THE VEHICULAR AND PEDESTRIAN PHASES USED ARE DESIGNATED BELOW.



PHASE DESIGNATION DIAGRAM

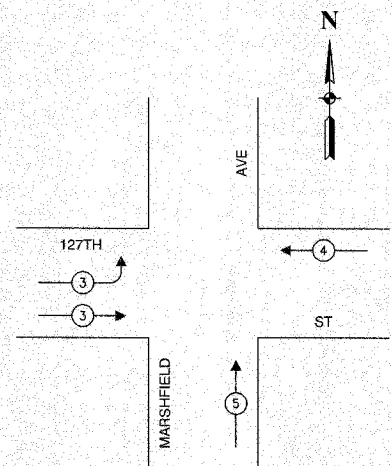
SINGLE ENTRY - ARTERIAL LEGS ONLY - PROTECTED ONLY LEFT TURN PHASING
 DUAL ENTRY - CROSS STREET LEGS ONLY - PROTECTED/PERMITTED LEFT TURN PHASING

SINGLE ENTRY PHASING NOTES (FOR THE ARTERIAL LEGS ONLY)

1. A PHASE IN ONE RING CAN BE SELECTED AND TIMED ALONE IF THERE IS NO DEMAND FOR SERVICE IN A NON-CONFLICTING PHASE ON THE PARALLEL RING ONLY ON THE ARTERIAL'S SIDE OF THE BARRIER.
2. A SINGLE PHASE SELECTED AS STATED IN NOTE 1 SHALL ONLY TERMINATE TO THE CONFLICTING PHASE ON THE SAME SIDE OF THE BARRIER OR TO ANY CONCURRENT PHASES ON THE OTHER SIDE OF THE BARRIER.
3. ONCE CONCURRENT TIMING OF BOTH RINGS OCCURS ON THE ARTERIAL'S SIDE OF THE BARRIER, THE ASSOCIATED CONCURRENT PHASES SHALL ONLY CLEAR TO OTHER CONCURRENT PHASES ON THE SAME SIDE OF THE BARRIER OR TO ANY CONCURRENT PHASES ON THE OTHER SIDE OF THE BARRIER.
4. TERMINATION OF A PHASE SHALL BE WITH A YELLOW INDICATION FOLLOWED BY A RED INDICATION.
5. IN FLASHING MODE, ALL VEHICULAR SIGNAL FACES SHALL FLASH RED AND ALL PEDESTRIAN SIGNAL FACES SHALL BE DARK.

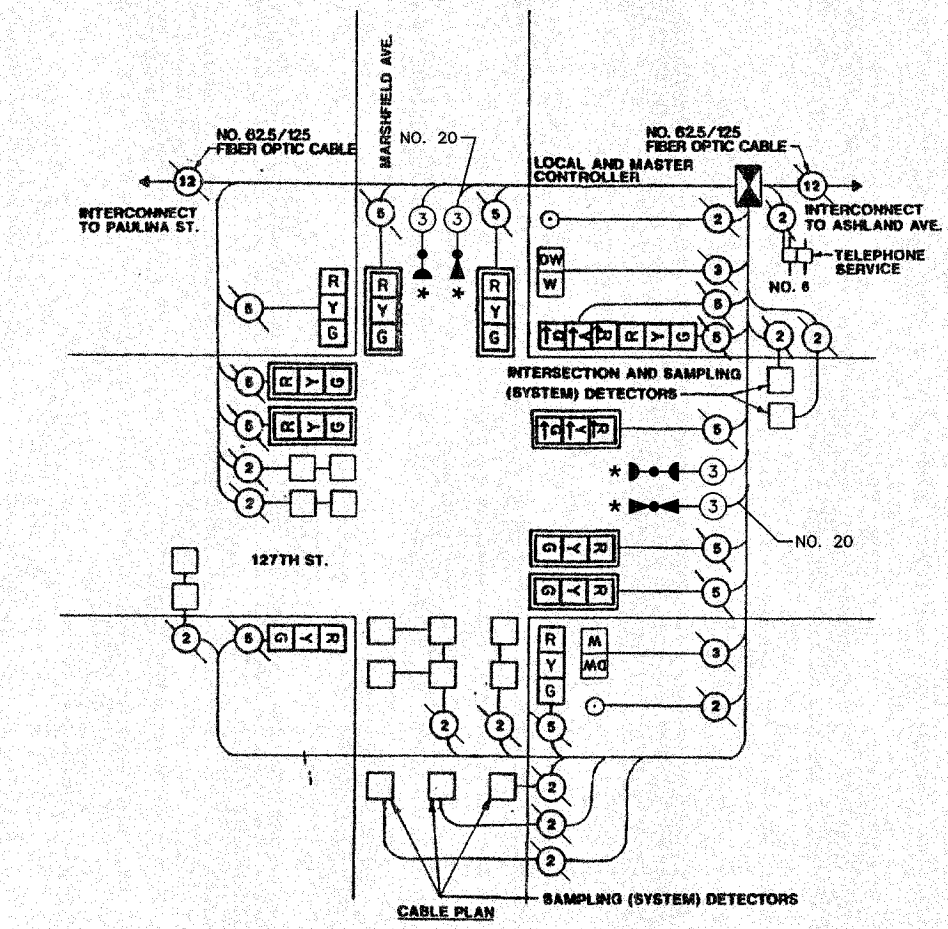
DUAL ENTRY PHASING NOTES (FOR THE CROSS STREET LEGS ONLY)

1. PHASES SHOWN ON THE CROSS STREET SHALL BE THE ONLY PHASES FOR WHICH STANDARD 2393 IS UTILIZED.



EMERGENCY VEHICLE PREEMPTION SEQUENCE

PROPOSED EMERGENCY VEHICLE PREEMPTORS		
EMERGENCY VEHICLE PREEMPTOR	3	4
MOVEMENT	→	←



CABLE PLAN SAMPLING (SYSTEM) DETECTORS

CABLE PLAN LEGEND

EXISTING	PROPOSED	DESCRIPTION
(Symbol)	(Symbol)	8" TRAFFIC SIGNAL SECTION
(Symbol)	(Symbol)	12" TRAFFIC SIGNAL SECTION
(Symbol)	(Symbol)	12" PEDESTRIAN SIGNAL SECTION
(Symbol)	(Symbol)	12" PEDESTRIAN SIGNAL SECTION
(Symbol)	(Symbol)	CONTROLLER CABINET
(Symbol)	(Symbol)	SERVICE INSTALLATION
(Symbol)	(Symbol)	TELEPHONE CONNECTION
(Symbol)	(Symbol)	MAGNETIC DETECTOR
(Symbol)	(Symbol)	EMERGENCY VEHICLE LIGHT DETECTOR
(Symbol)	(Symbol)	CONFIRMATION BEACON
(Symbol)	(Symbol)	PUSHBUTTON DETECTOR
(Symbol)	(Symbol)	VEHICLE DETECTOR, INDUCTION LOOP
(Symbol)	(Symbol)	DENOTES NUMBER OF CONDUCTORS. ALL CABLE NO. 14 EXCEPT AS INDICATED. ALL LOOP DETECTOR CABLE TO BE SHIELDED.
(Symbol)	(Symbol)	SIGNAL FACE WITH BACKPLATE
(Symbol)	(Symbol)	"P" INDICATES PROGRAMMED HEAD
(Symbol)	(Symbol)	RAILROAD CONTROL CABINET
(Symbol)	(Symbol)	ILLUMINATED SIGN, FIBER OPTIC "NO LEFT TURN"
(Symbol)	(Symbol)	ILLUMINATED SIGN, FIBER OPTIC "NO RIGHT TURN"
(Symbol)	(Symbol)	GROUND ROD AT HANDHOLE, DOUBLE HANDHOLE, OR CONTROLLER
(Symbol)	(Symbol)	GROUND ROD AT POST OR MAST ARM POLE
(Symbol)	(Symbol)	GROUND ROD AT ELECTRIC SERVICE INSTALLATION

SCHEDULE OF QUANTITIES

PAY ITEM	UNIT	QUANTITY
MAINTENANCE OF EXISTING TRAFFIC SIGNAL INSTALLATION	EACH	1
ELECTRIC CABLE IN CONDUIT, SIGNAL NO. 14 3C	FOOT	391
LIGHT DETECTOR	EACH	2
LIGHT DETECTOR AMPLIFIER	EACH	1
ELECTRIC CABLE IN CONDUIT NO. 20 3/C, TWISTED, SHIELDED	FOOT	391

NOTE

* 1. THIS PLAN IS FOR THE PURPOSE OF INSTALLING EMERGENCY VEHICLE PREEMPTION EQUIPMENT AS SHOWN PER PLAN INDICATED IN THE SCHEDULE OF QUANTITIES. ALL OTHER EQUIPMENT SHOWN SHALL BE DISREGARDED.

* PLANS MODIFIED BY ROBINSON ENGINEERING, LTD

REVISIONS

NAME	DATE
ADDED EV PREEMPTION	01/02/06

VILLAGE OF CALUMET PARK LOCATION NO. 36

ILLINOIS DEPARTMENT OF TRANSPORTATION

PROPOSED EMERGENCY VEHICLE PREEMPTION CABLE PLAN, PHASE DESIGNATION DIAGRAM & SCHEDULE OF QUANTITIES
 127TH STREET & MARSHFIELD AVENUE

SCALE: VERT. _____ HORIZ. _____ DATE _____ DRAWN BY _____ CHECKED BY _____