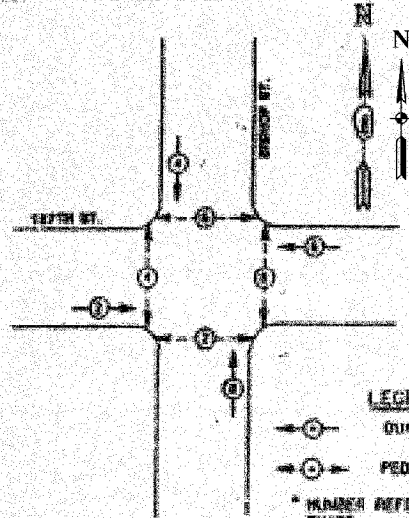


F. A. NO.	SECTION	COUNTY	TOTAL SHEETS	SHEET NO.
	08-00146-00-TL	COOK	273	096
STA.	TO STA.			
FED. ROAD DIST. NO.	ALIGNED	FED. AID PROJECT		

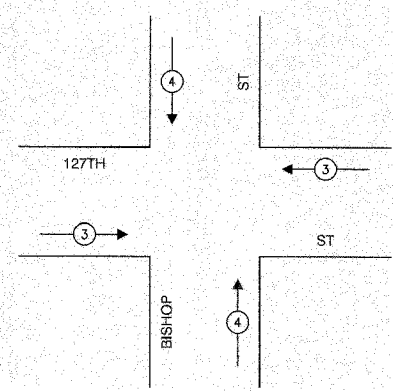
CONTRACT NO. 63003

**CONTROLLER SEQUENCE IV**  
 REFERRING TO STANDARD 2399, THE VEHICULAR AND PEDESTRIAN PHASES USED ARE DESIGNATED BELOW.



**LEGEND**  
 ○ → ○ DUAL ENTRY PHASE  
 ○ → ○ PEDESTRIAN PHASE  
 \* NUMBER REFERS TO ASSOCIATED PHASE

**EXISTING PHASE DESIGNATION DIAGRAM**  
 DUAL ENTRY - ALL LEGS  
 PROTECTED/PERMITTED LEFT TURN PHASING

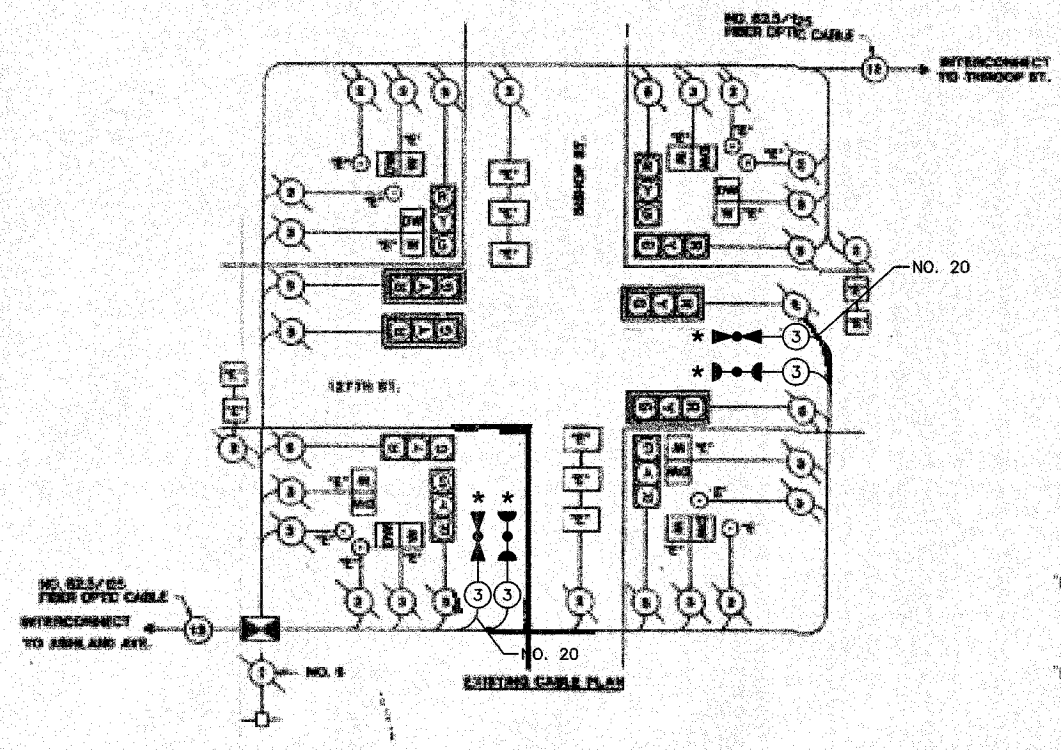
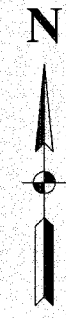


EMERGENCY VEHICLE PREEMPTION SEQUENCE

PROPOSED EMERGENCY VEHICLE PREEMPTORS		
EMERGENCY VEHICLE PREEMPTOR	3	4
MOVEMENT	←	↑

SCHEDULE OF QUANTITIES		
PAY ITEM	UNIT	QUANTITY
MAINTENANCE OF EXISTING TRAFFIC SIGNAL INSTALLATION	EACH	1
ELECTRIC CABLE IN CONDUIT, SIGNAL NO. 14 3C	FOOT	228
TRAFFIC SIGNAL POST, GALVANIZED STEEL 18 FT.	EACH	1
LIGHT DETECTOR	EACH	2
LIGHT DETECTOR AMPLIFIER	EACH	1
RELOCATE EXISTING SIGNAL HEAD	EACH	1
RELOCATE EXISTING PEDESTRIAN SIGNAL HEAD	EACH	1
RELOCATE EXISTING PEDESTRIAN PUSH-BUTTON	EACH	1
REMOVE AND REINSTALL ELECTRIC CABLE FROM CONDUIT	FOOT	15
REMOVE EXISTING TRAFFIC SIGNAL EQUIPMENT	EACH	1
ELECTRIC CABLE IN CONDUIT NO. 20 3/C, TWISTED, SHIELDED	FOOT	228

**NOTE**  
 \* 1. THIS PLAN IS FOR THE PURPOSE OF INSTALLING EMERGENCY VEHICLE PREEMPTION EQUIPMENT AS SHOWN PER PLAN INDICATED IN THE SCHEDULE OF QUANTITIES. ALL OTHER EQUIPMENT SHOWN SHALL BE DISREGARDED.



EXISTING	PROPOSED	
Ⓞ	Ⓞ	8" TRAFFIC SIGNAL SECTION
Ⓡ	Ⓡ	12" TRAFFIC SIGNAL SECTION
Ⓦ	Ⓦ	12" PEDESTRIAN SIGNAL SECTION
Ⓢ	Ⓢ	12" PEDESTRIAN SIGNAL SECTION
Ⓜ	Ⓜ	CONTROLLER CABINET
Ⓢ	Ⓢ	SERVICE INSTALLATION
Ⓣ	Ⓣ	TELEPHONE CONNECTION
Ⓜ	Ⓜ	MAGNETIC DETECTOR
Ⓢ	Ⓢ	EMERGENCY VEHICLE LIGHT DETECTOR
Ⓢ	Ⓢ	CONFIRMATION BEACON
Ⓢ	Ⓢ	PUSHBUTTON DETECTOR
Ⓢ	Ⓢ	VEHICLE DETECTOR, INDUCTION LOOP
Ⓢ	Ⓢ	DENOTES NUMBER OF CONDUCTORS. ALL CABLE NO. 14 EXCEPT AS INDICATED. ALL LOOP DETECTOR CABLE TO BE SHIELDED.
Ⓢ	Ⓢ	SIGNAL FACE WITH BACKPLATE
Ⓢ	Ⓢ	"P" INDICATES PROGRAMMED HEAD
Ⓢ	Ⓢ	RAILROAD CONTROL CABINET
Ⓢ	Ⓢ	ILLUMINATED SIGN, FIBER OPTIC "NO LEFT TURN"
Ⓢ	Ⓢ	ILLUMINATED SIGN, FIBER OPTIC "NO RIGHT TURN"
H/C	H/C	GROUND ROD AT HANDHOLE, DOUBLE HANDHOLE, OR CONTROLLER
P	P	GROUND ROD AT POST OR MAST ARM POLE
S	S	GROUND ROD AT ELECTRIC SERVICE INSTALLATION

VILLAGE OF CALUMET PARK  
 LOCATION NO. 39

ILLINOIS DEPARTMENT OF TRANSPORTATION

PROPOSED EMERGENCY VEHICLE PREEMPTION  
 CABLE PLAN, PHASE DESIGNATION DIAGRAM &  
 SCHEDULE OF QUANTITIES  
 127TH STREET & BISHOP STREET

\* PLANS MODIFIED BY ROBINSON ENGINEERING, LTD

REVISIONS	
NAME	DATE
* ADDED EV PREEMPTION NEW 18" POST	01/02/08

SCALE: VERT. \_\_\_\_\_ DRAWN BY \_\_\_\_\_  
 HORIZ. \_\_\_\_\_ CHECKED BY \_\_\_\_\_  
 DATE \_\_\_\_\_