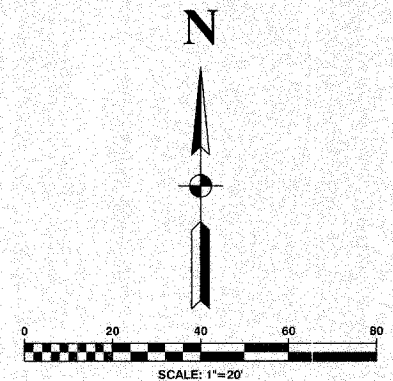


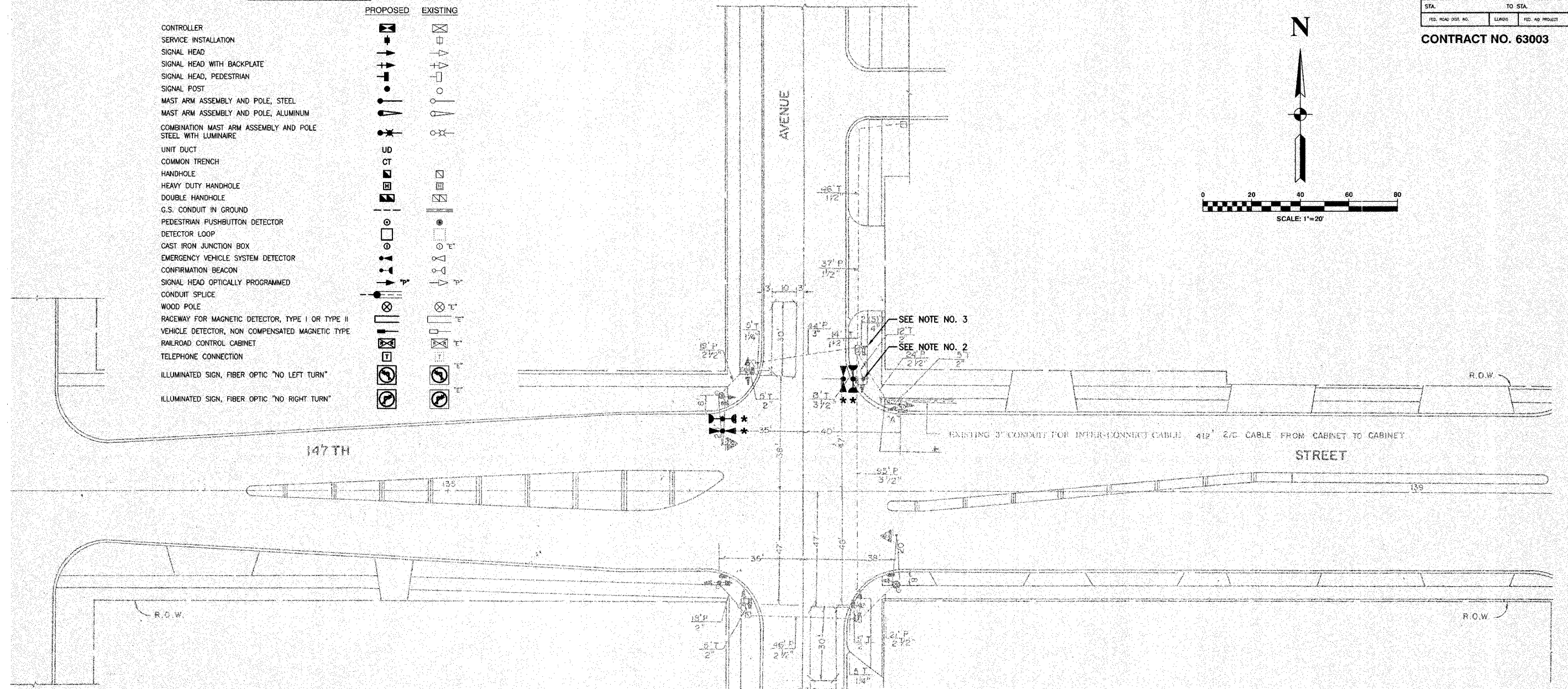
F. A. NO.	SECTION	COUNTY	TOTAL SHEETS	SHEET NO.
	08-00146-00-TL	COOK	275	218
STA.	TO STA.			
FED. ROAD DIST. NO.	LANDS	FED. AID PROJECT		

CONTRACT NO. 63003



TRAFFIC SIGNAL LEGEND

	PROPOSED	EXISTING
CONTROLLER		
SERVICE INSTALLATION		
SIGNAL HEAD		
SIGNAL HEAD WITH BACKPLATE		
SIGNAL HEAD, PEDESTRIAN		
SIGNAL POST		
MAST ARM ASSEMBLY AND POLE, STEEL		
MAST ARM ASSEMBLY AND POLE, ALUMINUM		
COMBINATION MAST ARM ASSEMBLY AND POLE STEEL WITH LUMINAIRE		
UNIT DUCT		
COMMON TRENCH		
HANDHOLE		
HEAVY DUTY HANDHOLE		
DOUBLE HANDHOLE		
G.S. CONDUIT IN GROUND		
PEDESTRIAN PUSHBUTTON DETECTOR		
DETECTOR LOOP		
CAST IRON JUNCTION BOX		
EMERGENCY VEHICLE SYSTEM DETECTOR		
CONFIRMATION BEACON		
SIGNAL HEAD OPTICALLY PROGRAMMED		
CONDUIT SPLICE		
WOOD POLE		
RACEWAY FOR MAGNETIC DETECTOR, TYPE I OR TYPE II		
VEHICLE DETECTOR, NON COMPENSATED MAGNETIC TYPE		
RAILROAD CONTROL CABINET		
TELEPHONE CONNECTION		
ILLUMINATED SIGN, FIBER OPTIC "NO LEFT TURN"		
ILLUMINATED SIGN, FIBER OPTIC "NO RIGHT TURN"		



NOTES

- * 1. THIS PLAN IS FOR THE PURPOSE OF INSTALLING EMERGENCY VEHICLE PREEMPTION EQUIPMENT AS SHOWN PER PLAN INDICATED IN THE SCHEDULE OF QUANTITIES. ALL OTHER EQUIPMENT SHOWN SHALL BE DISREGARDED.
- 2. EXISTING SIGNAL POST SHALL BE REPLACED WITH NEW 18-FOOT SIGNAL POST ON EXISTING FOUNDATION. RELOCATION OF ANY EXISTING SIGNAL HEADS, PEDESTRIAN SIGNAL HEADS OR PEDESTRIAN PUSHBUTTONS SHALL BE PAID FOR SEPARATELY. RELOCATION OF ANY SIGNS BRACKETED TO THE POST SHALL BE INCIDENTAL. THE LIGHT DETECTOR SHALL BE BRACKET MOUNTED TO THE TOP OF THE NEW POST. THE SALVAGE VALUE OF THE EXISTING POST SHALL BE INCLUDED IN THE PRICE OF THE PAY ITEM. "TRAFFIC SIGNAL POST, GALVANIZED STEEL, 18 FT."
- 4. THE FOLLOWING ITEMS SHALL BE REMOVED BY THE CONTRACTOR AND SHALL BE DISPOSED OF BY THEM OUTSIDE THE RIGHT-OF-WAY AT THEIR EXPENSE. THE SALVAGE VALUE OF THE REMOVED EQUIPMENT SHALL BE REFLECTED IN THE CONTRACTOR BID PRICE:
TRAFFIC SIGNAL POST, 16 FT EACH 1
- 5. THE FOLLOWING EXISTING TRAFFIC SIGNAL EQUIPMENT SHALL BE REMOVED BY THE CONTRACTOR, SHALL REMAIN THE PROPERTY OF IDOT, AND SHALL BE STORED AS STATED IN THE SPECIAL PROVISION FOR PICK UP BY THE IDOT FORCES AS DESIGNATED BY ENGINEER.

CONTROLLER	EACH	1
CONTROLLER CABINET	EACH	1

* PLANS MODIFIED BY ROBINSON ENGINEERING, LTD

REVISIONS	
NAME	DATE
* ADDED EV PREEMPTION	01/02/08
ADDED NEW 18' POST	
ADDED NEW CONTROLLER	

ILLINOIS DEPARTMENT OF TRANSPORTATION

**PROPOSED EMERGENCY VEHICLE PREEMPTION
147TH STREET & HARRISON AVENUE**

SCALE: VERT. _____
HORIZ. _____

DATE: _____ DRAWN BY: _____
CHECKED BY: _____