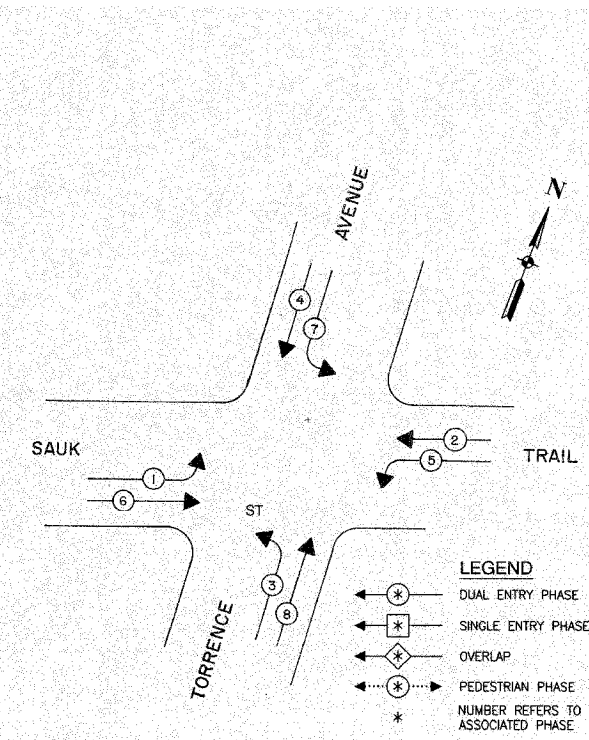


F. A. NO.	SECTION	COUNTY	TOTAL SHEETS	SHEET NO.
	08-00146-00-TL	COOK	273	235
STA.	TO STA.			
FED. ROAD DIST. NO.	CLIPPER	FED. AID PROJECT		

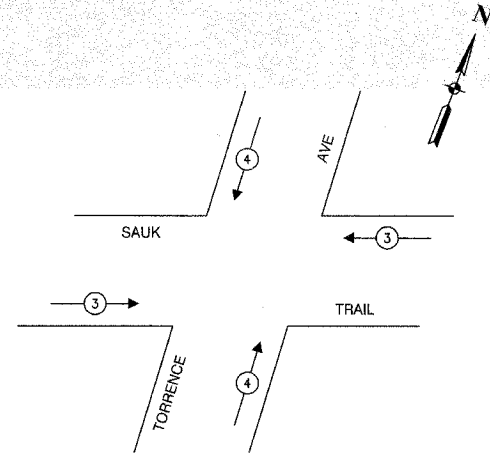
CONTRACT NO. 63003

CABLE PLAN LEGEND

- | EXISTING | PROPOSED |   |
|----------|----------|---|
|          |          | 8" TRAFFIC SIGNAL SECTION   |
|          |          | 12" TRAFFIC SIGNAL SECTION  |
|          |          | 12" PEDESTRIAN SIGNAL SECTION   |
|          |          | 12" PEDESTRIAN SIGNAL SECTION   |
|          |          | CONTROLLER CABINET  |
|          |          | SERVICE INSTALLATION  |
|          |          | TELEPHONE CONNECTION  |
|          |          | MAGNETIC DETECTOR   |
|          |          | EMERGENCY VEHICLE LIGHT DETECTOR  |
|          |          | CONFIRMATION BEACON   |
|          |          | PUSHBUTTON DETECTOR   |
|          |          | VEHICLE DETECTOR, INDUCTION LOOP  |
|          |          | DENOTES NUMBER OF CONDUCTORS.<br>ALL CABLE NO. 14 EXCEPT AS INDICATED.<br>ALL LOOP DETECTOR CABLE TO BE SHIELDED. |
|          |          | SIGNAL FACE WITH BACKPLATE<br>"P" INDICATES PROGRAMMED HEAD   |
|          |          | RAILROAD CONTROL CABINET  |
|          |          | ILLUMINATED SIGN, FIBOR OPTIC<br>"NO LEFT TURN"   |
|          |          | ILLUMINATED SIGN, FIBOR OPTIC<br>"NO RIGHT TURN"  |
|          |          | H/C GROUND ROD AT HANDHOLE,<br>DOUBLE HANDHOLE, OR CONTROLLER   |
|          |          | P GROUND ROD AT POST OR MAST ARM POLE   |
|          |          | S GROUND ROD AT ELECTRIC SERVICE INSTALLATION   |

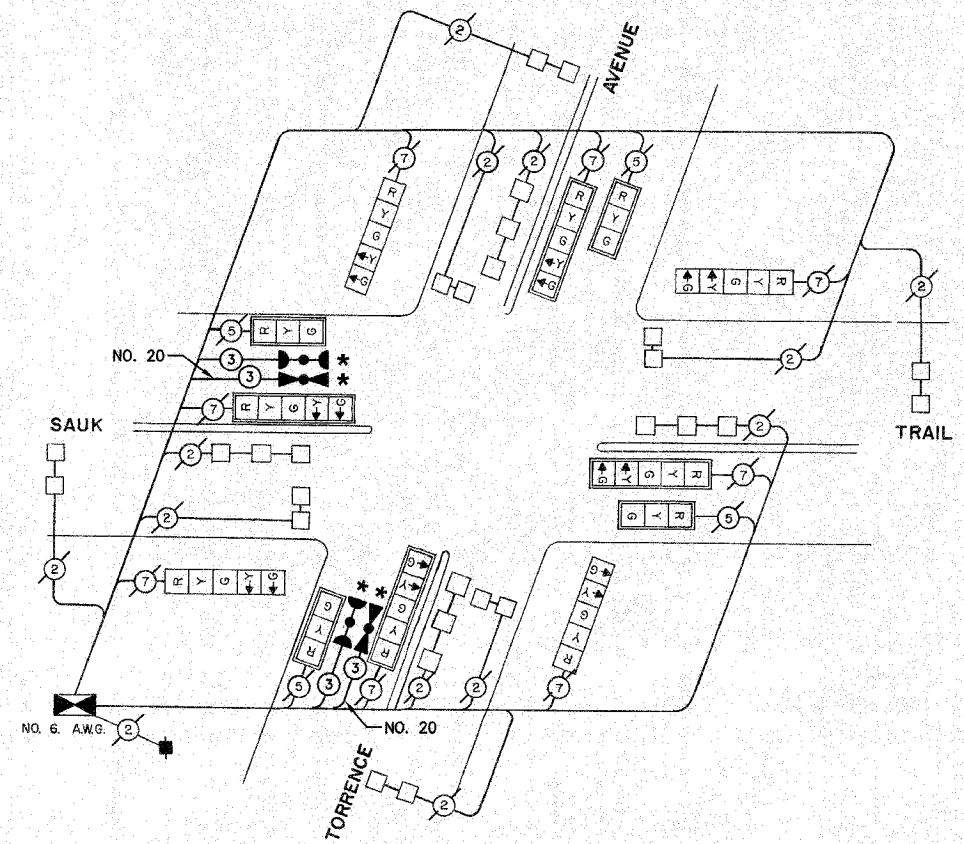


CONTROLLER SEQUENCE  
REFERRING TO STANDARD 2393, THE VEHICULAR AND PEDESTRIAN  
PHASES USED ARE DESIGNATED ABOVE.



EMERGENCY VEHICLE PREEMPTION SEQUENCE

PROPOSED EMERGENCY VEHICLE PREEMPTORS		
EMERGENCY VEHICLE PREEMPTOR	3	4
MOVEMENT	← →	↑ ↓



SCHEDULE OF QUANTITIES		
PAY ITEM	UNIT	QUANTITY
MAINTENANCE OF EXISTING TRAFFIC SIGNAL INSTALLATION	EACH	1
ELECTRIC CABLE IN CONDUIT, SIGNAL NO. 14 3C	FOOT	297
LIGHT DETECTOR	EACH	2
LIGHT DETECTOR AMPLIFIER	EACH	1
ELECTRIC CABLE IN CONDUIT NO. 20 3/C, TWISTED, SHIELDED	FOOT	297

NOTE  
\* 1. THIS PLAN IS FOR THE PURPOSE OF INSTALLING EMERGENCY  
VEHICLE PREEMPTION EQUIPMENT AS SHOWN PER PLAN  
INDICATED IN THE SCHEDULE OF QUANTITIES. ALL OTHER  
EQUIPMENT SHOWN SHALL BE DISREGARDED.

\* PLANS MODIFIED BY  
ROBINSON ENGINEERING, LTD.

REVISIONS	
NAME	DATE
* ADDED EV PREEMPTION	01/02/08

VILLAGE OF SAUK VILLAGE  
LOCATION NO. 113

ILLINOIS DEPARTMENT OF TRANSPORTATION

PROPOSED EMERGENCY VEHICLE PREEMPTION  
CABLE PLAN, PHASE DESIGNATION DIAGRAM &  
SCHEDULE OF QUANTITIES  
SAUK TRAIL & TORRENCE AVENUE

SCALE: VERT. \_\_\_\_\_  
HORIZ. \_\_\_\_\_

DATE \_\_\_\_\_ DRAWN BY \_\_\_\_\_  
CHECKED BY \_\_\_\_\_

ROBINSON ENGINEERING, LTD.  
17000 SOUTH PARK AVENUE SOUTH HOLLAND, ILLINOIS 60478  
(708) 581-6700 FAX (708) 581-3608  
ILLINOIS DESIGN FIRM REGISTRATION NO. 184011188