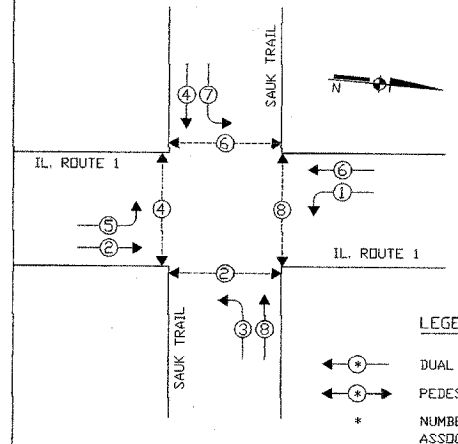
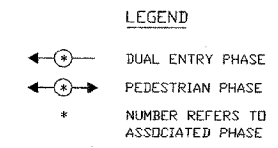


F.A. RTE.	SECTION	COUNTY	TOTAL SHEETS	SHEET NO.
	08-000146-00-TL		273	243
STA.		TO STA.		
FED. ROAD DIST. NO.	ILLINOIS	FED. AID PROJECT		

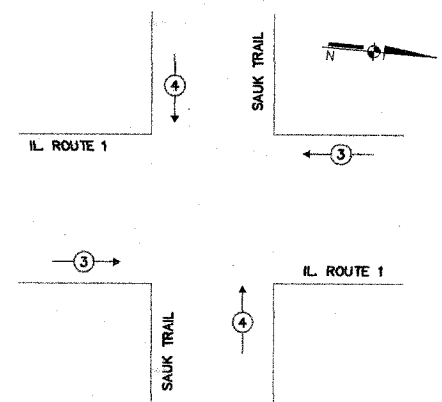
EXISTING CONTROLLER SEQUENCE



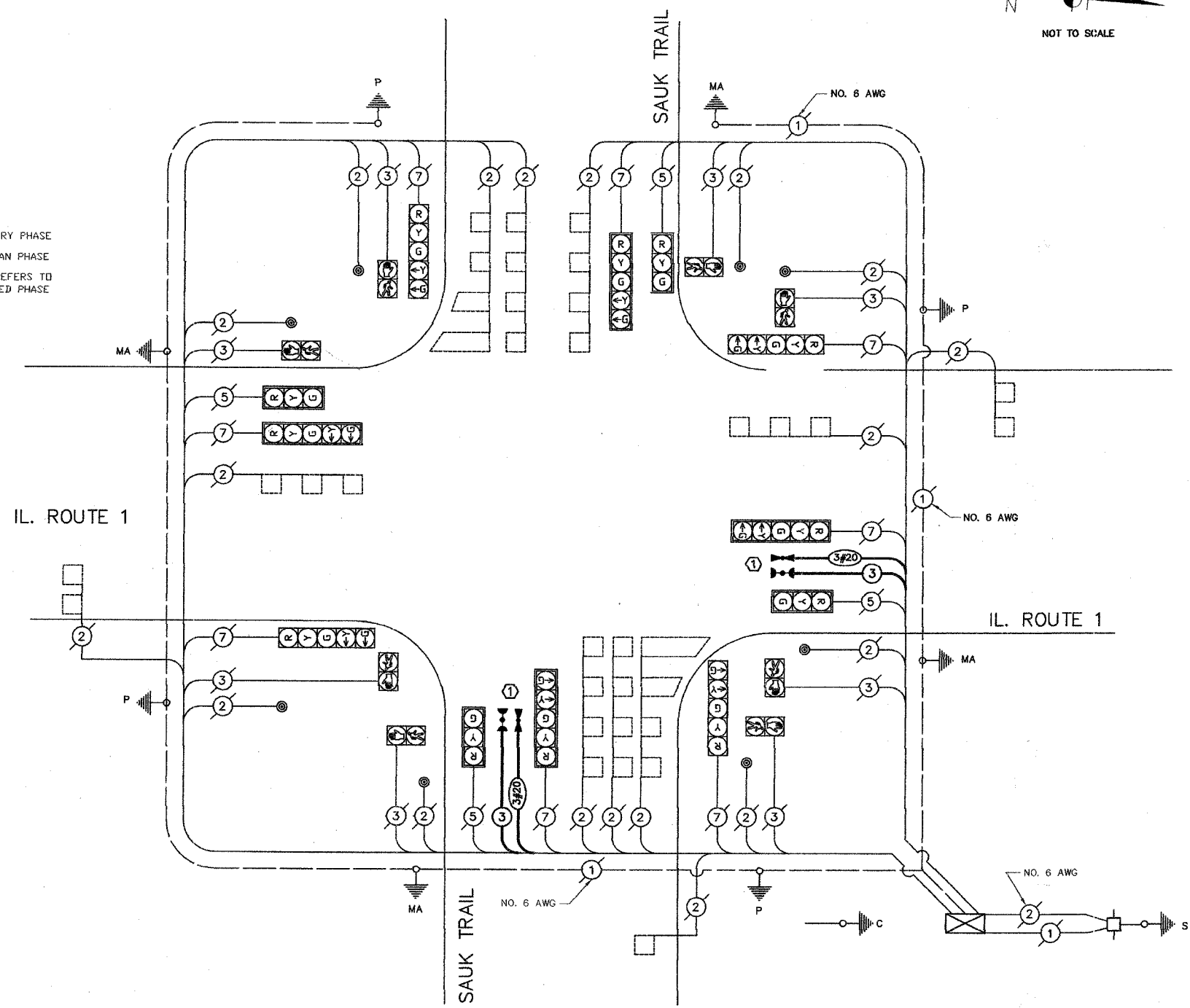
PHASE DESIGNATION DIAGRAM



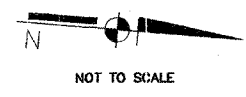
EMERGENCY VEHICLE PREEMPTION SEQUENCE



PROPOSED EMERGENCY VEHICLE PREEMPTORS		
EMERGENCY VEHICLE PREEMPTORS	3	4
MOVEMENT	↔	↕



CABLE PLAN



CABLE PLAN LEGEND

- | EXISTING | PROPOSED | |
|----------|----------|---|
| | | 8' TRAFFIC SIGNAL SECTION |
| | | 12' TRAFFIC SIGNAL SECTION |
| | | 12' PEDESTRIAN SIGNAL SECTION |
| | | CONTROLLER CABINET |
| | | SERVICE INSTALLATION |
| | | TELEPHONE INSTALLATION |
| | | VEHICLE DETECTOR, INDUCTION LOOP |
| | | MAGNETIC DETECTOR |
| | | EMERGENCY VEHICLE LIGHT DETECTOR |
| | | CONFIRMATION BEACON |
| | | PUSHBUTTON DETECTOR |
| | | DENITES NUMBER OF CONDUCTORS. |
| | | ALL CABLE NO. 14 EXCEPT AS INDICATED. |
| | | ALL LOOP DETECTOR CABLE TO BE SHIELDED. |
| | | SIGNAL FACE WITH BACKPLATE. |
| | | "P" INDICATES PROGRAMMED HEAD. |
| | | RAILROAD CONTROL CABINET |
| | | ILLUMINATED SIGN, FIBER OPTIC |
| | | "NO LEFT TURN" |
| | | ILLUMINATED SIGN, FIBER OPTIC |
| | | "NO RIGHT TURN" |
| | | GROUND ROD AT HANDHOLE (H), |
| | | DOUBLE HANDHOLE (HD), |
| | | OR CONTROLLER (C) |
| | | GROUND ROD AT POST |
| | | OR MAST ARM POLE |
| | | GROUND ROD AT ELECTRIC |
| | | SERVICE INSTALLATION |
| | | GROUND CABLE IN CONDUIT |
| | | NO. 6 SOLID COPPER (GREEN) |
| | | FIBER OPTIC CABLE IN CONDUIT |
| | | NO. 62.5/125 2-MM12F & SM12F |

SCHEDULE OF QUANTITIES

Pay Item	Unit	Quantity
Maintenance of Existing Traffic Signal Installation	Each	1
Electric Cable in Conduit, Signal No. 14, 3c	Meter	83.4
Light Detector	Each	4
Light Detector Amplifier	Each	1
Electric Cable in Conduit, No. 20 3c Twisted Shielded	Meter	83.4
Traffic Control and Protection Standard 701701	Each	1

NOTES:
 ① THIS PLAN IS FOR THE PURPOSE OF INSTALLING EMERGENCY VEHICLE PREEMPTION EQUIPMENT AS SHOWN PER PLAN INDICATED IN THE SCHEDULE OF QUANTITIES. ALL OTHER EQUIPMENT SHOWN SHALL BE DISREGARDED.

MODIFIED BY JOSEPH SCHUDT and ASSOCIATES

REVISIONS	
NAME	DATE

VILLAGE OF SOUTH CHICAGO HEIGHTS
 LOCATION NO 117
 ILLINOIS DEPARTMENT OF TRANSPORTATION
 EMERGENCY VEHICLE PREEMPTION
 CABLE PLAN
 CONTROLLER SEQUENCE
 SCHEDULE OF QUANTITIES
 IL. ROUTE 1 AND SAUK TRAIL
 SCALE: N.T.S.
 DATE: 1/02/08
 DRAWN BY: MJD
 CHECKED BY: MJD