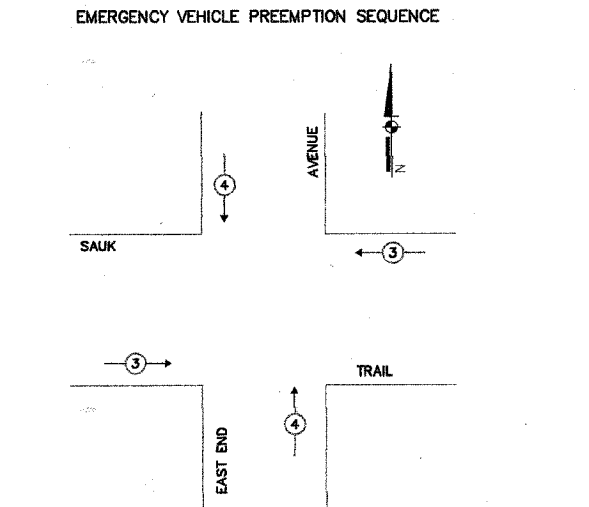
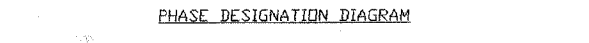
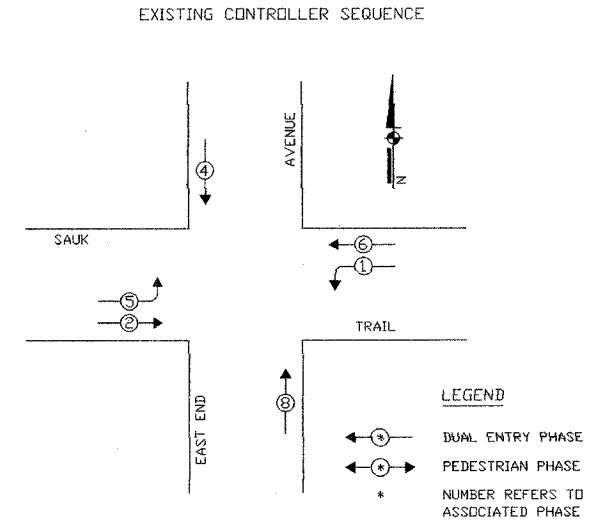
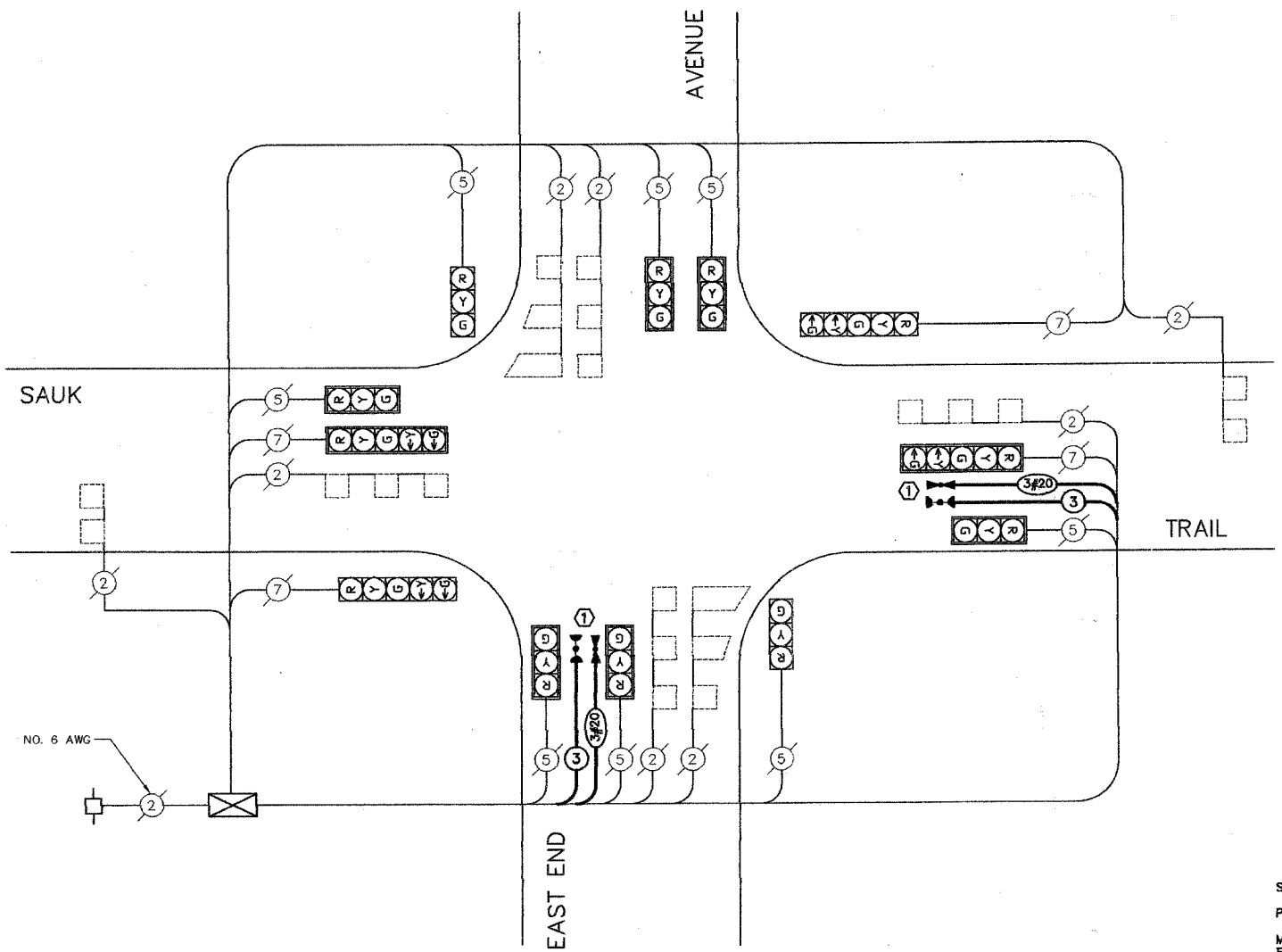


F.A. RTE.	SECTION	COUNTY	TOTAL SHEETS	SHEET NO.
	08-000146-00-TL		273	247
STA.		TO STA.		
FED. ROAD DIST. NO.		ILLINOIS FED. AID PROJECT		



PROPOSED EMERGENCY VEHICLE PREEMPTORS		
EMERGENCY VEHICLE PREEMPTORS	3	4
MOVEMENT	↔	↕



CABLE PLAN LEGEND

EXISTING	PROPOSED	DESCRIPTION
[Symbol]	[Symbol]	8' TRAFFIC SIGNAL SECTION
[Symbol]	[Symbol]	12' TRAFFIC SIGNAL SECTION
[Symbol]	[Symbol]	12' PEDESTRIAN SIGNAL SECTION
[Symbol]	[Symbol]	12' PEDESTRIAN SIGNAL SECTION
[Symbol]	[Symbol]	CONTROLLER CABINET
[Symbol]	[Symbol]	SERVICE INSTALLATION
[Symbol]	[Symbol]	TELEPHONE INSTALLATION
[Symbol]	[Symbol]	VEHICLE DETECTOR, INDUCTIVE LOOP
[Symbol]	[Symbol]	MAGNETIC DETECTOR
[Symbol]	[Symbol]	EMERGENCY VEHICLE LIGHT DETECTOR
[Symbol]	[Symbol]	CONFIRMATION BEACON
[Symbol]	[Symbol]	PUSHBUTTON DETECTOR
[Symbol]	[Symbol]	DENOTES NUMBER OF CONDUCTORS. ALL CABLE NO. 14 EXCEPT AS INDICATED. ALL LOOP DETECTOR CABLE TO BE SHIELDED.
[Symbol]	[Symbol]	SIGNAL FACE WITH BACKPLATE. 'P' INDICATES PROGRAMMED HEAD.
[Symbol]	[Symbol]	RAILROAD CONTROL CABINET
[Symbol]	[Symbol]	ILLUMINATED SIGN, FIBER OPTIC 'NO LEFT TURN'
[Symbol]	[Symbol]	ILLUMINATED SIGN, FIBER OPTIC 'NO RIGHT TURN'
[Symbol]	[Symbol]	GROUND ROD AT HANDHOLE (H), DOUBLE HANDHOLE (HD), OR CONTROLLER (C)
[Symbol]	[Symbol]	GROUND ROD AT POST OR MAST ARM POLE
[Symbol]	[Symbol]	GROUND ROD AT ELECTRIC SERVICE INSTALLATION
[Symbol]	[Symbol]	GROUND CABLE IN CONDUIT NO. 6 SOLID COPPER (GREEN)
[Symbol]	[Symbol]	FIBER OPTIC CABLE IN CONDUIT NO. 62.5/125 2-MM12F & SM12F

SCHEDULE OF QUANTITIES

Pay Item	Unit	Quantity
Maintenance of Existing Traffic Signal Installation	Each	1
Electric Cable in Conduit, Signal No. 14, 3c	Foot	250
Light Detector	Each	4
Light Detector Amplifier	Each	1
Electric Cable in Conduit, No. 20 3c Twisted Shielded	Foot	250
Traffic Control and Protection Standard 701701	Each	1

CABLE PLAN

NOTES:

① THIS PLAN IS FOR THE PURPOSE OF INSTALLING EMERGENCY VEHICLE PREEMPTION EQUIPMENT AS SHOWN PER PLAN INDICATED IN THE SCHEDULE OF QUANTITIES. ALL OTHER EQUIPMENT SHOWN SHALL BE DISREGARDED.

MODIFIED BY JOSEPH SCHUDT and ASSOCIATES

VILLAGE OF SOUTH CHICAGO HEIGHTS  
LOCATION NO 119

REVISIONS	
NAME	DATE

ILLINOIS DEPARTMENT OF TRANSPORTATION  
EMERGENCY VEHICLE PREEMPTION  
CABLE PLAN  
CONTROLLER SEQUENCE  
SCHEDULE OF QUANTITIES  
SAUK TRAIL AND EAST END AVENUE

SCALE: N.T.S.      DRAWN BY: MJD  
DATE: 1/02/08      CHECKED BY: MJD