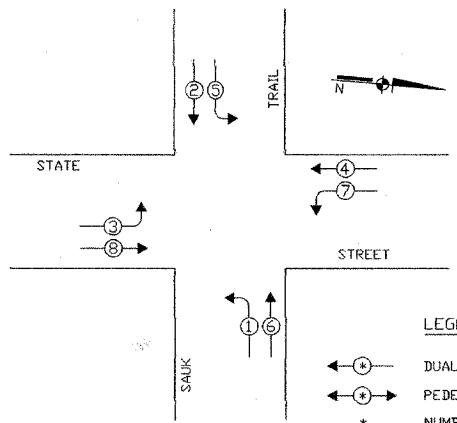


CABLE PLAN LEGEND

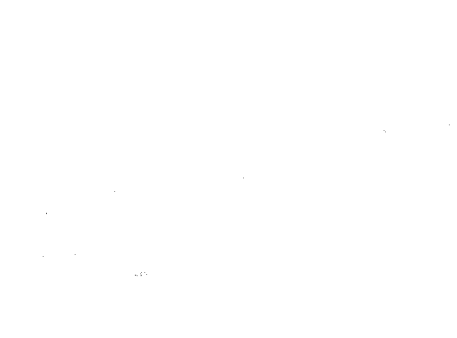
- | | | | | |
|--|-----------------|--|-----------------|---|
| | EXISTING | | PROPOSED | 8' TRAFFIC SIGNAL SECTION |
| | | | | 12' TRAFFIC SIGNAL SECTION |
| | | | | 12' PEDESTRIAN SIGNAL SECTION |
| | | | | 12' PEDESTRIAN SIGNAL SECTION |
| | | | | CONTROLLER CABINET |
| | | | | SERVICE INSTALLATION |
| | | | | TELEPHONE INSTALLATION |
| | | | | VEHICLE DETECTOR, INDUCTION LOOP |
| | | | | MAGNETIC DETECTOR |
| | | | | EMERGENCY VEHICLE LIGHT DETECTOR |
| | | | | CONFIRMATION BEACON |
| | | | | PUSHBUTTON DETECTOR |
| | | | | DENOTES NUMBER OF CONDUCTORS. |
| | | | | ALL CABLE NO. 14 EXCEPT AS INDICATED. |
| | | | | ALL LOOP DETECTOR CABLE TO BE SHIELDED. |
| | | | | SIGNAL FACE WITH BACKPLATE. |
| | | | | "P" INDICATES PROGRAMMED HEAD. |
| | | | | RAILROAD CONTROL CABINET |
| | | | | ILLUMINATED SIGN, FIBER OPTIC |
| | | | | "NO LEFT TURN" |
| | | | | ILLUMINATED SIGN, FIBER OPTIC |
| | | | | "NO RIGHT TURN" |
| | | | | GROUND ROD AT HANDHOLE (H), |
| | | | | DOUBLE HANDHOLE (HD), |
| | | | | OR CONTROLLER (C) |
| | | | | GROUND ROD AT POST |
| | | | | OR MAST ARM POLE |
| | | | | GROUND ROD AT ELECTRIC |
| | | | | SERVICE INSTALLATION |
| | | | | GROUND CABLE IN CONDUIT |
| | | | | NO. 6 SOLID COPPER (GREEN) |
| | | | | FIBER OPTIC CABLE IN CONDUIT |
| | | | | NO. 62.5/125 2-MM12F & SM12F |

EXISTING CONTROLLER SEQUENCE

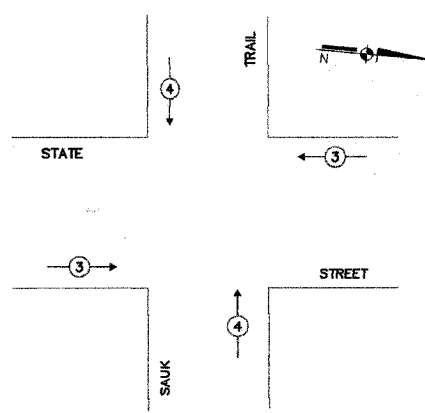


- LEGEND**
- DUAL ENTRY PHASE
 - PEDESTRIAN PHASE
 - * NUMBER REFERS TO ASSOCIATED PHASE

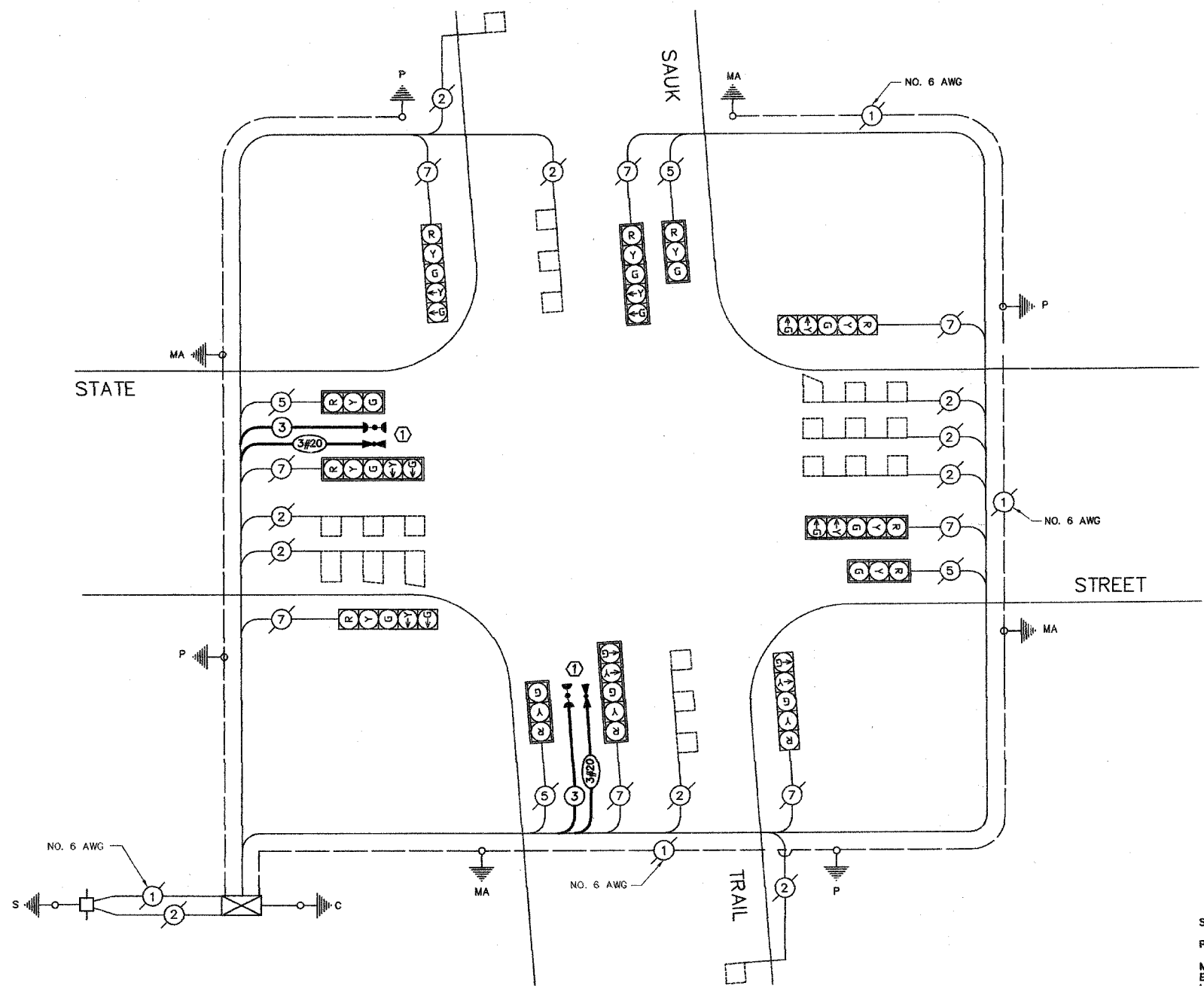
PHASE DESIGNATION DIAGRAM



EMERGENCY VEHICLE PREEMPTION SEQUENCE



PROPOSED EMERGENCY VEHICLE PREEMPTORS		
EMERGENCY VEHICLE PREEMPTORS	3	4
MOVEMENT	←→	↑↓



CABLE PLAN

SCHEDULE OF QUANTITIES

Pay Item	Unit	Quantity
Maintenance of Existing Traffic Signal Installation	Each	1
Electric Cable in Conduit, Signal No. 14, 3c	Meter	101.4
Light Detector	Each	4
Light Detector Amplifier	Each	1
Electric Cable in Conduit, No. 20 3c Twisted Shielded	Meter	101.4
Traffic Control and Protection Standard 701701	Each	1

NOTES:

① THIS PLAN IS FOR THE PURPOSE OF INSTALLING EMERGENCY VEHICLE PREEMPTION EQUIPMENT AS SHOWN PER PLAN INDICATED IN THE SCHEDULE OF QUANTITIES. ALL OTHER EQUIPMENT SHOWN SHALL BE DISREGARDED.

MODIFIED BY JOSEPH SCHUDT and ASSOCIATES

REVISIONS	
NAME	DATE

VILLAGE OF SOUTH CHICAGO HEIGHTS
LOCATION NO 120

ILLINOIS DEPARTMENT OF TRANSPORTATION

**EMERGENCY VEHICLE PREEMPTION
CABLE PLAN
CONTROLLER SEQUENCE
SCHEDULE OF QUANTITIES**

STATE STREET AND SAUK TRAIL

SCALE: N.T.S. DRAWN BY: MJD
DATE: 1/02/08 CHECKED BY: MJD