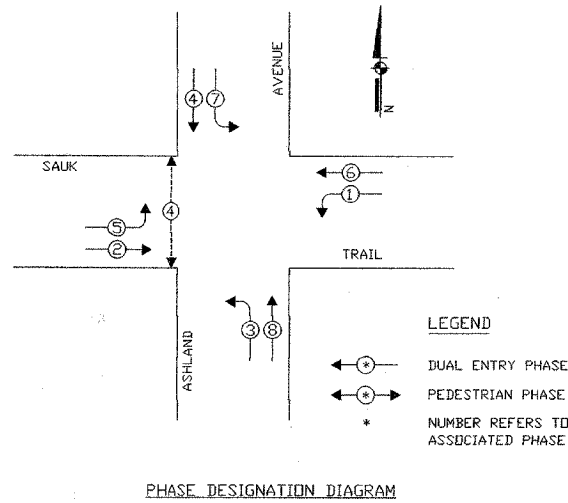
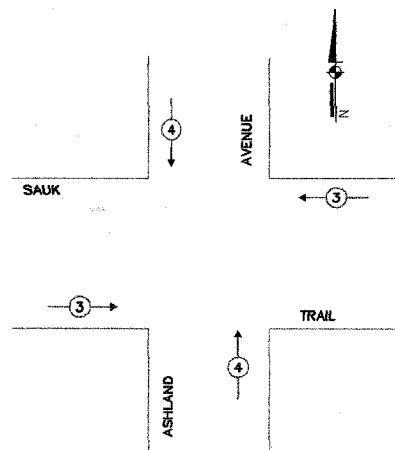


F.A. RTE.	SECTION	COUNTY	TOTAL SHEETS	SHEET NO.
	08-000148-00-TL		273	251
STA.		TO STA.		
FED. ROAD DIST. NO.		ILLINOIS FED. AID PROJECT		

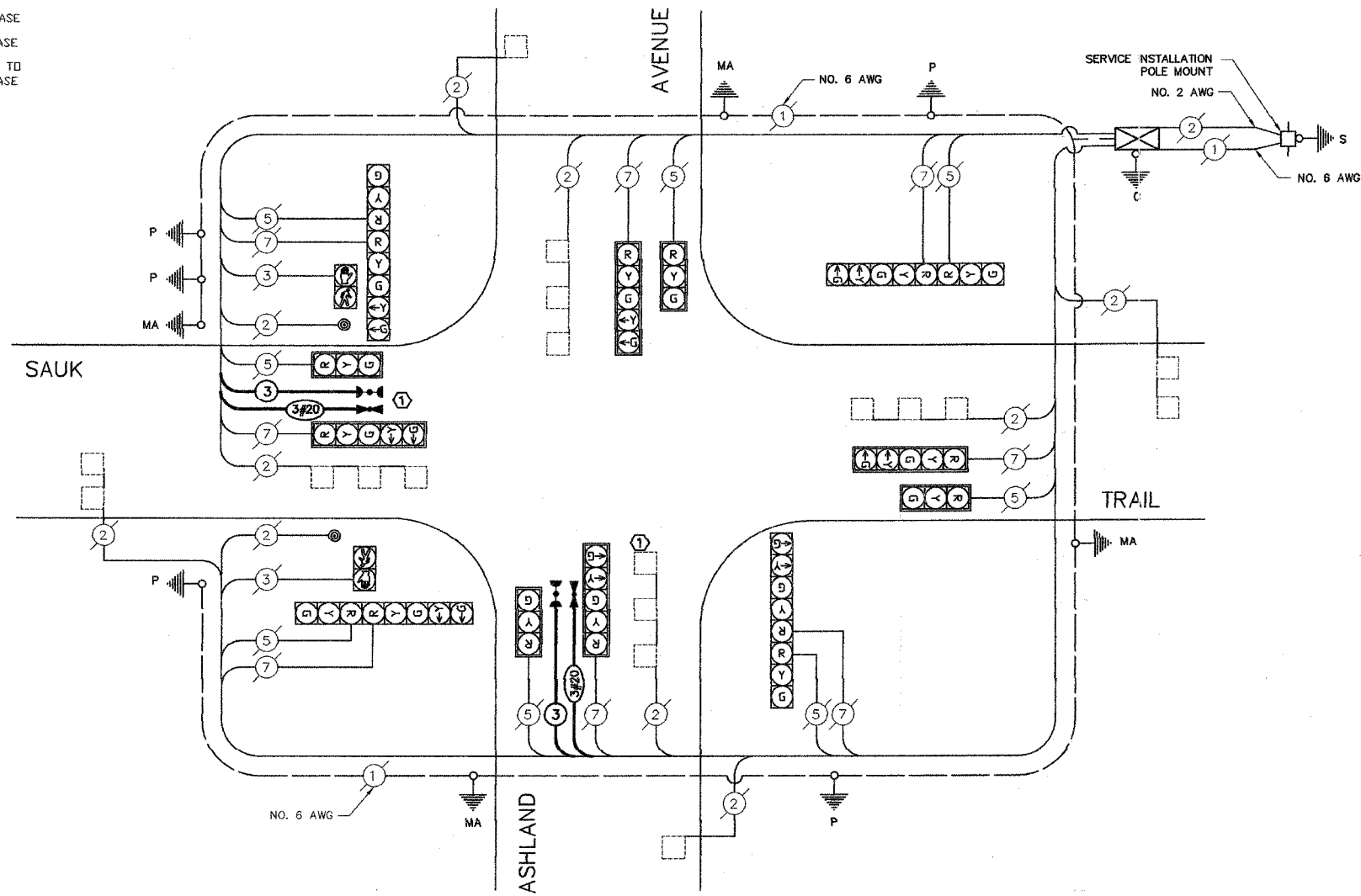
EXISTING CONTROLLER SEQUENCE



EMERGENCY VEHICLE PREEMPTION SEQUENCE



PROPOSED EMERGENCY VEHICLE PREEMPTORS		
EMERGENCY VEHICLE PREEMPTORS	3	4
MOVEMENT	↔	↕



CABLE PLAN

CABLE PLAN LEGEND

- | EXISTING | PROPOSED | |
|----------|----------|---|
| | | 8' TRAFFIC SIGNAL SECTION |
| | | 12' TRAFFIC SIGNAL SECTION |
| | | 12' PEDESTRIAN SIGNAL SECTION |
| | | 12' PEDESTRIAN SIGNAL SECTION |
| | | CONTROLLER CABINET |
| | | SERVICE INSTALLATION |
| | | TELEPHONE INSTALLATION |
| | | VEHICLE DETECTOR, INDUCTION LOOP |
| | | MAGNETIC DETECTOR |
| | | EMERGENCY VEHICLE LIGHT DETECTOR |
| | | CONFIRMATION BEACON |
| | | PUSHBUTTON DETECTOR |
| | | DENOTES NUMBER OF CONDUCTORS. |
| | | ALL CABLE NO. 14 EXCEPT AS INDICATED. |
| | | ALL LOOP DETECTOR CABLE TO BE SHIELDED. |
| | | SIGNAL FACE WITH BACKPLATE. |
| | | *P* INDICATES PROGRAMMED HEAD. |
| | | RAILROAD CONTROL CABINET |
| | | ILLUMINATED SIGN, FIBER OPTIC |
| | | *ND LEFT TURN* |
| | | ILLUMINATED SIGN, FIBER OPTIC |
| | | *ND RIGHT TURN* |
| | | GROUND ROD AT HANDHOLE (H), |
| | | DOUBLE HANDHOLE (HD), |
| | | OR CONTROLLER (C) |
| | | GROUND ROD AT POST |
| | | OR MAST ARM POLE |
| | | GROUND ROD AT ELECTRIC |
| | | SERVICE INSTALLATION |
| | | GROUND CABLE IN CONDUIT |
| | | NO. 6 SOLID COPPER (GREEN) |
| | | FIBER OPTIC CABLE IN CONDUIT |
| | | NO. 62.5/125 2-MM12F & SM12F |

SCHEDULE OF QUANTITIES

Pay Item	Unit	Quantity
Maintenance of Existing Traffic Signal Installation	Each	1
Electric Cable in Conduit, Signal No. 14, 3c	Foot	499
Light Detector	Each	4
Light Detector Amplifier	Each	1
Electric Cable in Conduit, No. 20 3c Twisted Shielded	Foot	499
Traffic Control and Protection Standard 701701	Each	1

VILLAGE OF SOUTH CHICAGO HEIGHTS
LOCATION NO 121

MODIFIED BY JOSEPH SCHUDT and ASSOCIATES

NOTES:

① THIS PLAN IS FOR THE PURPOSE OF INSTALLING EMERGENCY VEHICLE PREEMPTION EQUIPMENT AS SHOWN PER PLAN INDICATED IN THE SCHEDULE OF QUANTITIES. ALL OTHER EQUIPMENT SHOWN SHALL BE DISREGARDED.

REVISIONS		ILLINOIS DEPARTMENT OF TRANSPORTATION EMERGENCY VEHICLE PREEMPTION CABLE PLAN CONTROLLER SEQUENCE SCHEDULE OF QUANTITIES SAUK TRAIL AND ASHLAND AVENUE
NAME	DATE	
		SCALE: N.T.S. DRAWN BY: MJD DATE: 1/02/08 CHECKED BY: MJD