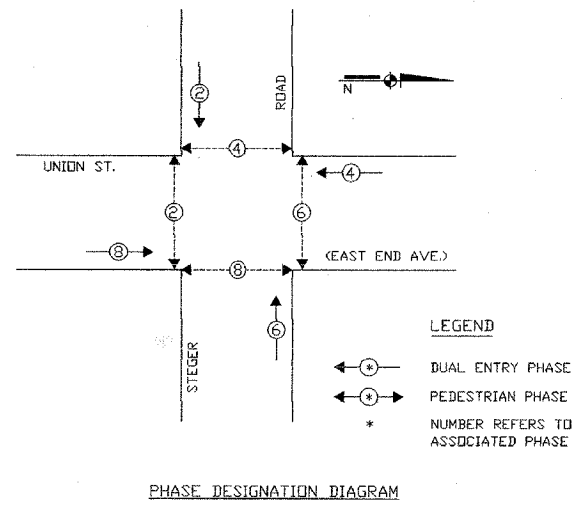
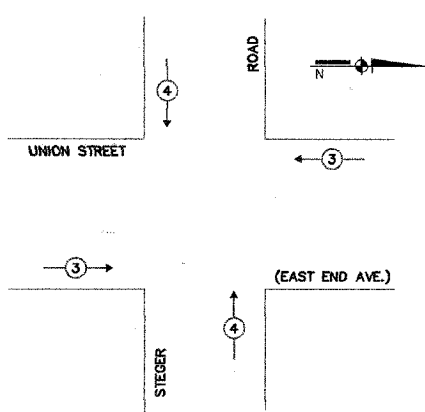


F.A. RTE.	SECTION	COUNTY	TOTAL SHEETS	SHEET NO.
	08-000146-00-TL		273	253
STA.		TO STA.		
FED. ROAD DIST. NO.		ILLINOIS FED. AID PROJECT		

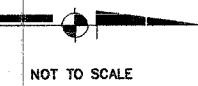
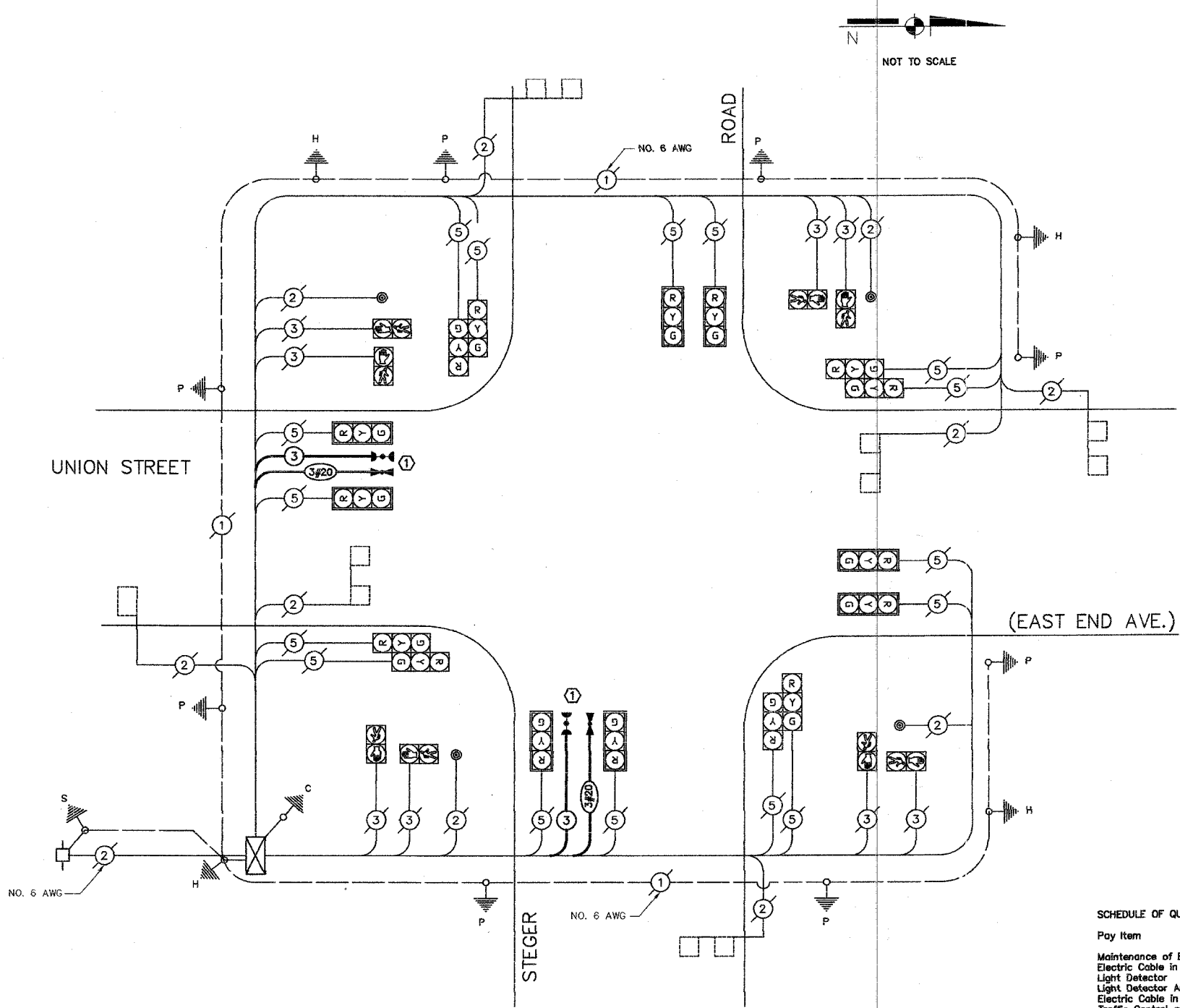
EXISTING CONTROLLER SEQUENCE



EMERGENCY VEHICLE PREEMPTION SEQUENCE



PROPOSED EMERGENCY VEHICLE PREEMPTORS		
EMERGENCY VEHICLE PREEMPTORS	3	4
MOVEMENT	↔	↕



CABLE PLAN LEGEND

- | EXISTING | PROPOSED | |
|----------|----------|---|
| | | 8' TRAFFIC SIGNAL SECTION |
| | | 12' TRAFFIC SIGNAL SECTION |
| | | 12' PEDESTRIAN SIGNAL SECTION |
| | | CONTROLLER CABINET |
| | | SERVICE INSTALLATION |
| | | TELEPHONE INSTALLATION |
| | | VEHICLE DETECTOR, INDUCTION LOOP |
| | | MAGNETIC DETECTOR |
| | | EMERGENCY VEHICLE LIGHT DETECTOR |
| | | CONFIRMATION BEACON |
| | | PUSHBUTTON DETECTOR |
| | | DENITES NUMBER OF CONDUCTORS. |
| | | ALL CABLE NO. 14 EXCEPT AS INDICATED. |
| | | ALL LOOP DETECTOR CABLE TO BE SHIELDED. |
| | | SIGNAL FACE WITH BACKPLATE. |
| | | *P* INDICATES PROGRAMMED HEAD. |
| | | RAILROAD CONTROL CABINET |
| | | ILLUMINATED SIGN, FIBER OPTIC 'NO LEFT TURN' |
| | | ILLUMINATED SIGN, FIBER OPTIC 'NO RIGHT TURN' |
| | | GROUND ROD AT HANDHOLE (H), |
| | | DOUBLE HANDHOLE (HD), |
| | | OR CONTROLLER (C) |
| | | GROUND ROD AT POST OR MAST ARM POLE |
| | | GROUND CABLE IN CONDUIT NO. 6 SOLID COPPER (GREEN) |
| | | FIBER OPTIC CABLE IN CONDUIT NO. 62.5/125 2-MM12F & SM12F |

SCHEDULE OF QUANTITIES

Pay Item	Unit	Quantity
Maintenance of Existing Traffic Signal Installation	Each	1
Electric Cable in Conduit, Signal No. 14, 3c	Meter	127.1
Light Detector	Each	4
Light Detector Amplifier	Each	1
Electric Cable in Conduit, No. 20 3c Twisted Shielded	Meter	127.1
Traffic Control and Protection Standard 701701	Each	1

CABLE PLAN

MODIFIED BY JOSEPH SCHUDT and ASSOCIATES

NOTES:
 ① THIS PLAN IS FOR THE PURPOSE OF INSTALLING EMERGENCY VEHICLE PREEMPTION EQUIPMENT AS SHOWN PER PLAN INDICATED IN THE SCHEDULE OF QUANTITIES. ALL OTHER EQUIPMENT SHOWN SHALL BE DISREGARDED.

VILLAGE OF STEGER
 LOCATION NO 122

REVISIONS	
NAME	DATE

ILLINOIS DEPARTMENT OF TRANSPORTATION
 EMERGENCY VEHICLE PREEMPTION
 CABLE PLAN
 CONTROLLER SEQUENCE
 SCHEDULE OF QUANTITIES
 UNION STREET (EAST END AVE.) AND STEGER ROAD
 SCALE: N.T.S. DRAWN BY: MJD
 DATE: 1/02/08 CHECKED BY: MJD